

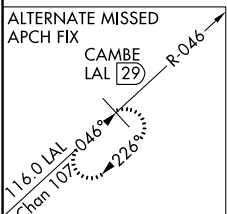
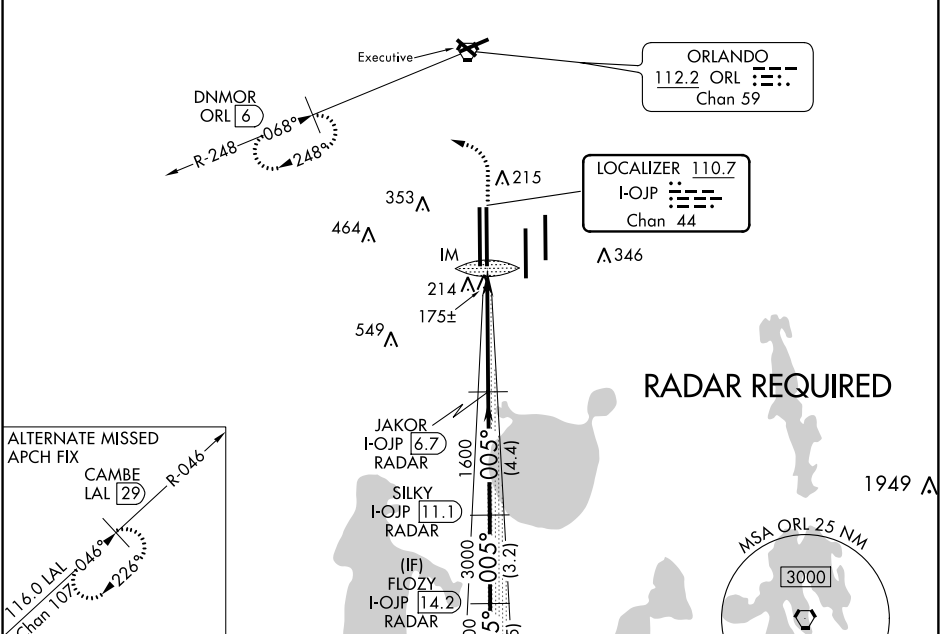
LOC/DME I-OJP 110.7 Chan 44	APP CRS 005°	Rwy Idg 11601 TDZE 92 Apt Elev 96
---	------------------------	--

ILS RWY 36R (CAT II & III)

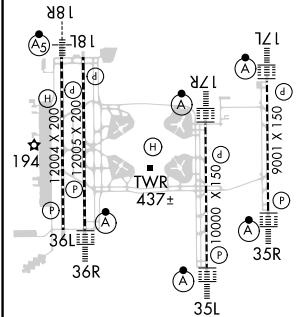
ORLANDO INTL (MCO)

DME or RADAR required. Simultaneous approach authorized.	ALSF-2 	MISSED APPROACH: Climb to 500 then climbing left turn to 3000 on heading 309° and ORL R-248 to DNMOR/ORL 6 DME and hold, continue climb-in-hold to 3000.		

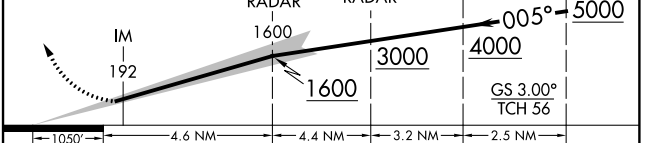
D-ATIS ARR 121.25 DEP 120.525	ORLANDO APP CON 124.8 307.0	ORLANDO TOWER 124.3 (Rwys 18L-36R, 18R-36L) 253.5 118.45 (Rwys 17L-35R, 17R-35L) 253.5	GND CON 126.4 275.8 (East) 121.8 275.8 (West)	CLNC DEL 134.7 341.7	CPDLC
---	---------------------------------------	--	--	--	-------



ELEV 96	D	TDZE 92
---------	----------	---------



500	3000	hdg 309° ORL R-248	DNMOR ORL [6]	VGSI and ILS glidepath not coincident. (VGSI Angle 3.00/TCH 70).	TRAMP I-OJP [16.8] RADAR
					FLOZY I-OJP [14.2] RADAR
					JAKOR I-OJP [6.7] RADAR
					SILKY I-OJP [11.1] RADAR



CATEGORY	A	B	C	D
S-ILS 36R	CAT II RA106/12 100 DA 192			
S-ILS 36R	CAT III RVR 06			

CATEGORY II & III ILS - SPECIAL AIRCREW & AIRCRAFT CERTIFICATION REQUIRED

SE-3, 10 OCT 2019 to 07 NOV 2019

SE-3, 10 OCT 2019 to 07 NOV 2019