

LOC/DME I-OJP 110.7 Chan 44	APP CRS 005°	Rwy Idg 11601 TDZE 92 Apt Elev 96
---	------------------------	--

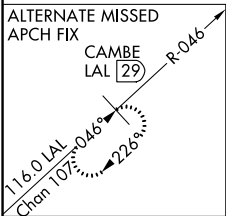
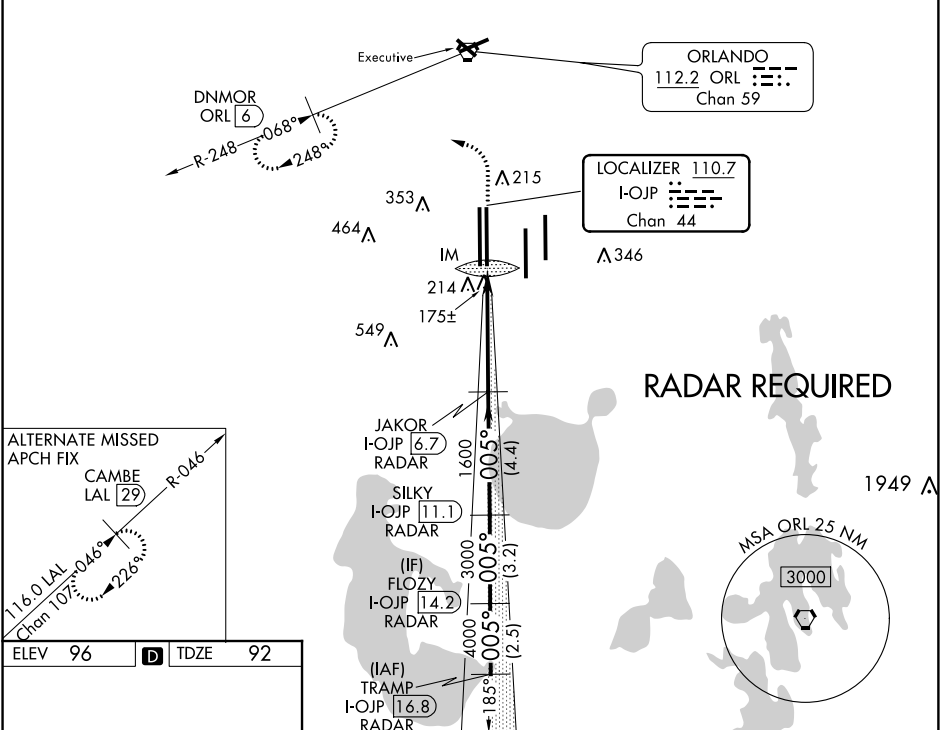
ILS RWY 36R (SA CAT I)

ORLANDO INTL (MCO)

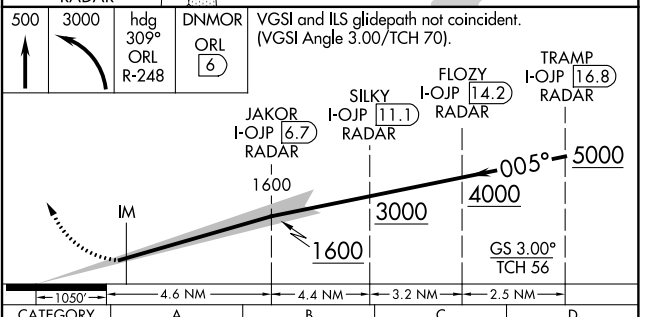
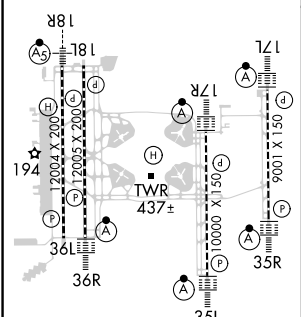
▼ DME or RADAR required. Simultaneous approach authorized. Requires specific OPSPEC, MSPEC or LOA approval and use of HUD to DH.

▲ MISSED APPROACH: Climb to 500 then climbing left turn to 3000 on heading 309° and ORL R-248 to DNMOR ORL 6 DME and hold, continue climb-in-hold to 3000.

D-ATIS ARR 121.25 DEP 120.525	ORLANDO APP CON 124.8 307.0	ORLANDO TOWER 124.3 (Rwys 18L-36R, 18R-36L) 253.5 (Rwys 17L-35R, 17R-35L)	GND CON 126.4 275.8 (East) 121.8 275.8 (West)	CLNC DEL 134.7 341.7	CPDLC
---	---------------------------------------	---	---	--	-------



ELEV 96	D	TDZE 92
---------	----------	---------



500	3000	hdg 309° ORL R-248	DNMOR ORL 6	VGS and ILS glidepath not coincident. (VGS Angle 3.00/TCH 70).
IM		JAKOR I-OJP 6.7 RADAR	SILKY I-OJP 11.1 RADAR	FLOZY I-OJP 14.2 RADAR
TRAMP I-OJP 16.8 RADAR		GS 3.00° TCH 56		
CATEGORY A		CATEGORY B		CATEGORY C
S-ILS 36R		RA 158/14 150 DA 242		

SA CATEGORY I ILS - SPECIAL AIRCREW & AIRCRAFT CERTIFICATION REQUIRED

SE-3, 10 OCT 2019 to 07 NOV 2019

SE-3, 10 OCT 2019 to 07 NOV 2019