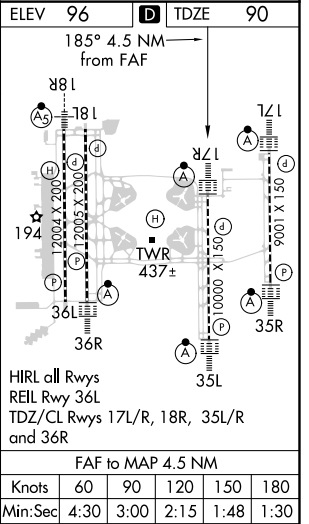
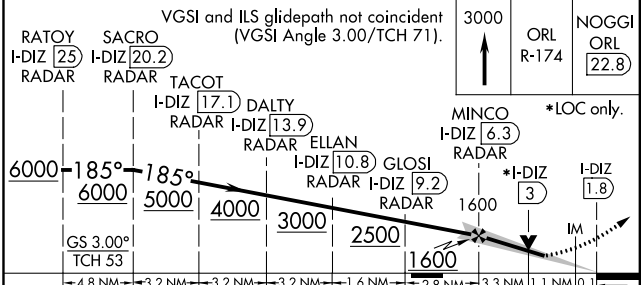
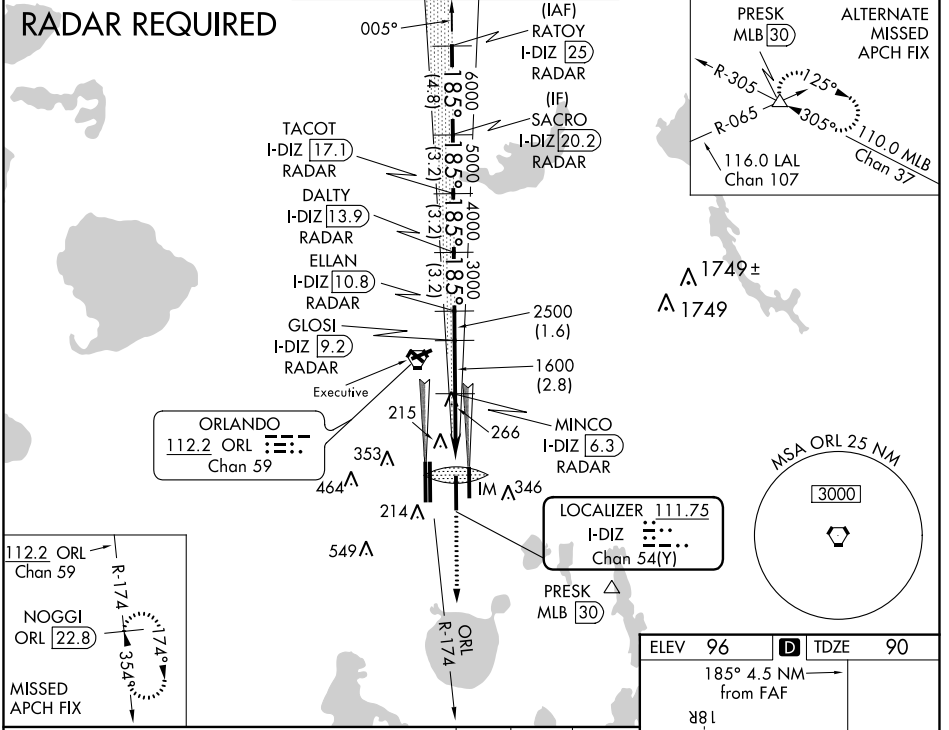


LOC/DME I-DIZ 111.75 Chan 54(Y)	APP CRS 185°	Rwy Idg 10000 TDZE 90 Apt Elev 96
---	------------------------	--

ILS or LOC RWY 17R

ORLANDO INTL (MCO)

⚠ Simultaneous approach authorized. DME or RADAR required. Bright lights on highway midway between Rwy 17L and Rwy 17R may be mistaken for runway lights.	ORLANDO TOWER 124.3 (Rwys 18L-36R, 18R-36L) 253.5 118.45 (Rwys 17L-35R, 17R-35L) 253.5		GND CON 126.4 275.8 (East) 121.8 275.8 (West)	CLNC DEL 134.7 341.7	CPDLC
	D-ATIS ARR 121.25 DEP 120.525	ORLANDO APP CON 124.8 307.0	MISSED APPROACH: Climb to 3000 via ORL VORTAC R-174 to NOGGI/ ORL 22.8 DME and hold.	ALSF-2 	



CATEGORY	A	B	C	D
S-ILS 17R	290/18 200 (200-½)			
S-LOC 17R	520/24 430 (500-½)	520/40 430 (500-¾)	520/50 430 (500-1)	
CIRCLING	740-1 644 (700-1)	740-1¼ 644 (700-1¾)	740-2 644 (700-2)	

SE-3, 10 OCT 2019 to 07 NOV 2019

SE-3, 10 OCT 2019 to 07 NOV 2019