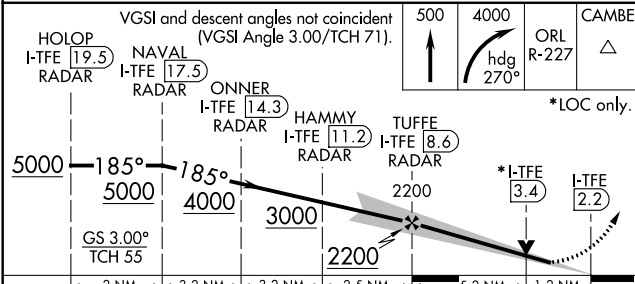
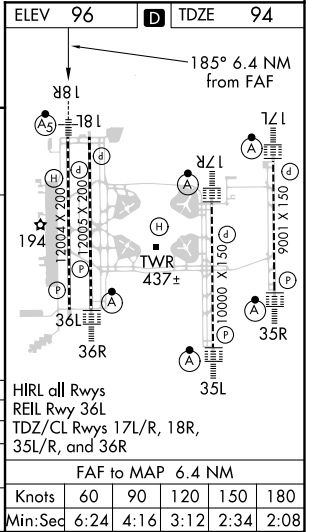
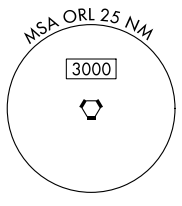
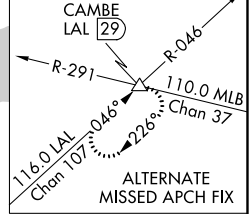
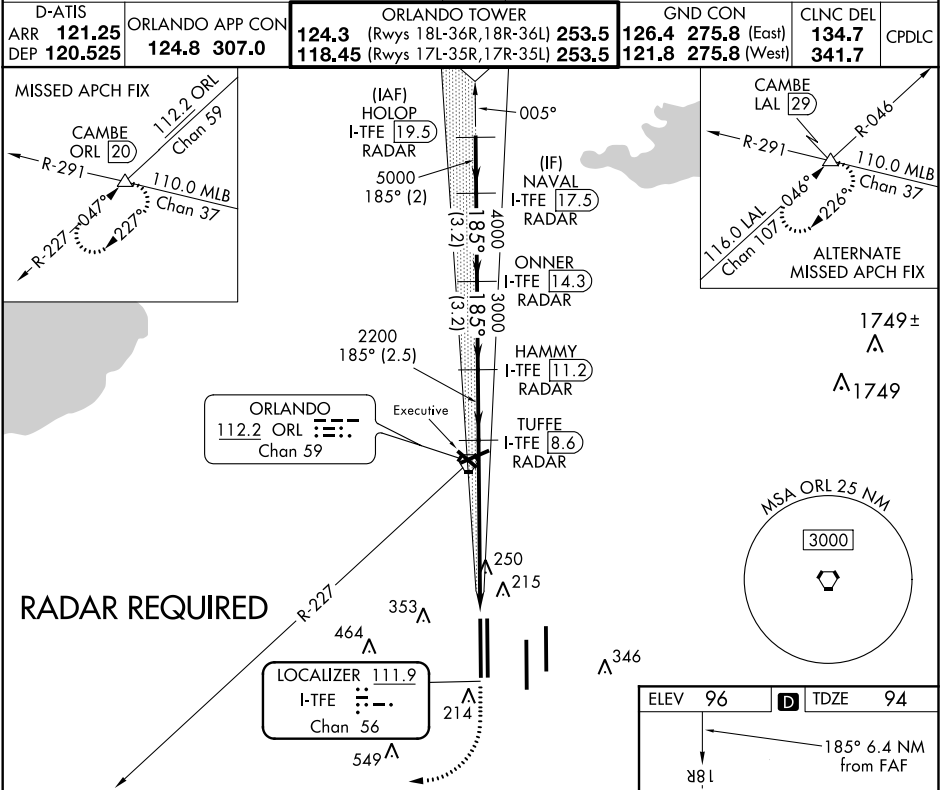


ILS or LOC RWY 18R

ORLANDO INTL (MCO)

LOC/DME I-TFE 111.9 Chan 56	APP CRS 185°	Rwy Idg 12004 TDZE 94 Apt Elev 96
-------------------------------------------------	------------------------	--------------------------------------------------------------

<p>Simultaneous approach authorized. DME or RADAR required.</p>	<p>MALS R</p>	<p>MISSED APPROACH: Climb to 500 then climbing right turn to 4000 on heading 270° and on ORL VORTAC R-227 to CAMBE INT/ORL 20 DME and hold, continue climb-in-hold to 4000.</p>	
			<p>ARR 121.25 ORLANDO APP CON 124.3 (Rwys 18L-36R, 18R-36L) 253.5 126.4 275.8 (East) 134.7</p> <p>DEP 120.525 124.8 307.0 118.45 (Rwys 17L-35R, 17R-35L) 253.5 121.8 275.8 (West) 341.7</p>



CATEGORY	A	B	C	D
S-ILS 18R	294/18 200 (200-1/2)			
S-LOC 18R	540/24 446 (500-1/2)	540/45 446 (500-7/8)		
CIRCLING	740-1 644 (700-1)	740-1 3/4 644 (700-1 3/4)	740-2 644 (700-2)	

SE-3, 10 OCT 2019 to 07 NOV 2019

SE-3, 10 OCT 2019 to 07 NOV 2019