

|  |                        |   |
|--|------------------------|---|
| LOC/DME I-DDO<br><b>110.5</b><br>Chan 42 | APP CRS<br><b>005°</b> | Rwy Idg<br>TDZE<br>Apt Elev<br><b>10000</b><br><b>88</b><br><b>96</b> |
|--|------------------------|---|

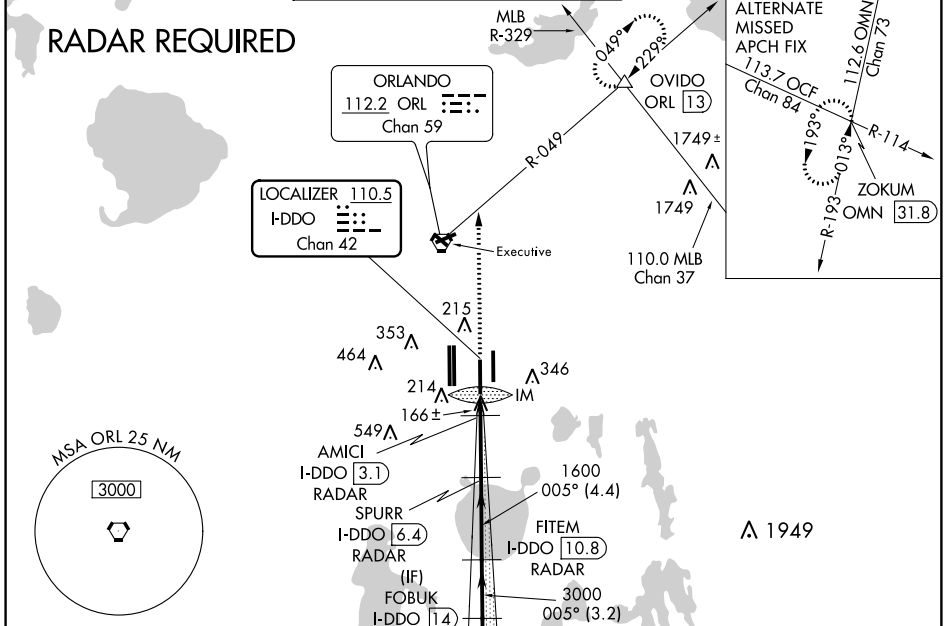
# ILS or LOC RWY 35L

ORLANDO INTL (MCO)

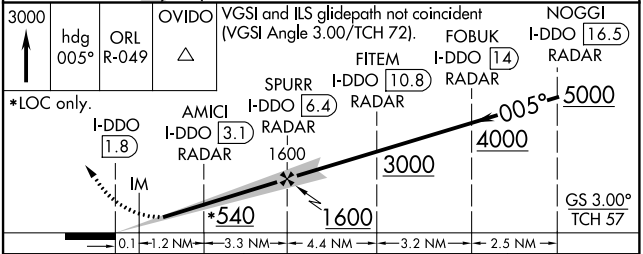
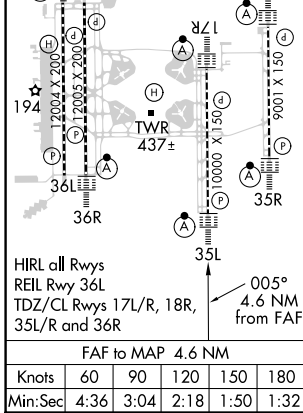
**⚠** DME or RADAR required. Bright lights on highway midway between Rwy 35L and Rwy 35R may be mistaken for runway lights. Simultaneous approach authorized. When using alternate missed approach, simultaneous approach NA.

**ALSF-2**  
**ⓐ** MISSED APPROACH: Climb to 3000 on heading 005° and ORL VORTAC R-049 to OVIDO INT/ORL 13 DME and hold.

|   |                                       |  |   |  |       |
|---|---------------------------------------|--|---|--|-------|
| D-ATIS<br>ARR <b>121.25</b><br>DEF <b>120.525</b> | ORLANDO APP CON<br><b>124.8 307.0</b> | ORLANDO TOWER<br><b>124.3</b> (Rwys 18L-36R, 18R-36L) <b>253.5</b><br><b>118.45</b> (Rwys 17L-35R, 17R-35L) <b>253.5</b> | GND CON<br><b>126.4 275.8</b> (East)<br><b>121.8 275.8</b> (West) | CLNC DEL<br><b>134.7</b><br><b>341.7</b> | CPDLC |
|---|---------------------------------------|--|---|--|-------|



|         |                  |
|---------|------------------|
| ELEV 96 | <b>D</b> TDZE 88 |
|---------|------------------|



|                   |          |             |                 |   |                  |
|-------------------|----------|-------------|-----------------|---|------------------|
| 3000              | hdg 005° | ORL R-049   | OVIDO           | VGSI and ILS glidepath not coincident (VGSI Angle 3.00/TCH 72). | NOGCI I-DDO 16.5 |
| *LOC only.        |          | I-DDO 1.8   | AMICI I-DDO 3.1 | SPURR I-DDO 6.4   | FITEM I-DDO 10.8 |
| CATEGORY          |          | A           | B               | C   | D                |
| S-ILS 35L         |          | 288/18      |                 | 200 (200-1/2)   |                  |
| S-LOC 35L         |          | 420/24      | 332 (400-1/2)   | 420/26  | 332 (400-1/2)    |
| <b>C</b> CIRCLING | 740-1    | 644 (700-1) |                 | 740-1 3/4   | 644 (700-1 3/4)  |
|                   |          |             |                 | 740-2   | 644 (700-2)      |