

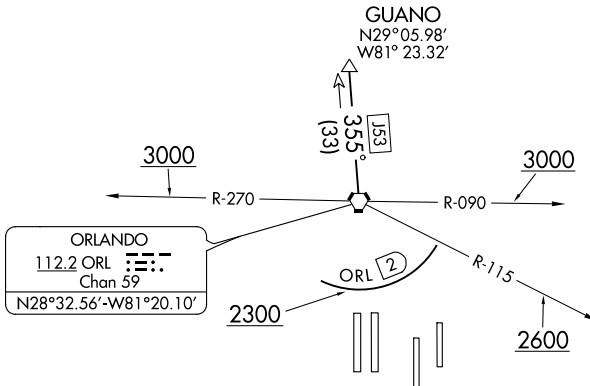
MCCOY TWO DEPARTURE

D-ATIS DEP
120.525
CLNC DEL
134.7 341.7
CPDCL
GND CON
126.4 275.8 (East)
121.8 275.8 (West)
ORLANDO INTL TOWER
118.45 (Rwys 17L-35R, 17R-35L) 253.5
124.3 (Rwys 18L-36R, 18R-36L) 253.5

**TOP ALTITUDE:
5000**

TAKEOFF MINIMUMS

Rwys 17L/R, 18L/R, 35L/R, 36L/R: Standard.



NOTE: DME and RADAR required.
NOTE: Turbojets only.

NOTE: Chart not to scale.



DEPARTURE ROUTE DESCRIPTION

TAKEOFF RWYS 17L/R, 18L/R: Climb on heading as assigned. Thence. . . .

TAKEOFF RWYS 35L/R, 36L/R: Climb on heading as assigned. Cross 2 DME south of ORL VORTAC at or above 2300, cross ORL VOTRAC R-115 at or above 2600, cross ORL VORTAC R-090 or R-270 at or above 3000. Thence. . . .

. . . .for vectors to ORL VORTAC R-355 to GUANO. Maintain 5000. Expect further clearance to filed altitude/flight level 10 minutes after departure.

SE-3, 10 OCT 2019 to 07 NOV 2019

SE-3, 10 OCT 2019 to 07 NOV 2019