

WAAS CH 66012 W18A	APP CRS 185°	Rwy Idg 12004 TDZE 96 Apt Elev 96
--	------------------------	--

RNAV (GPS) RWY 18L

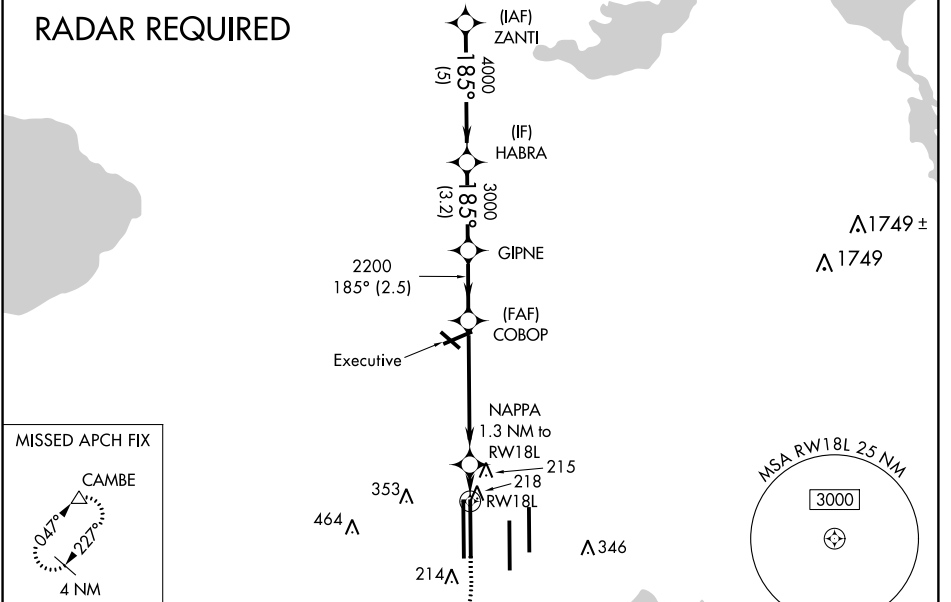
ORLANDO INTL (MCO)

▽ For uncompensated Baro-VNAV systems, LNAV/VNAV NA below -1°C (31°F) or above 54°C (130°F). DME/DME RNP-0.3 NA. Simultaneous approach authorized with Rwy 17L/R. LNAV procedure NA during simultaneous operations. Use of FD or AP providing RNAV track guidance required during simultaneous operations.

MISSED APPROACH: Climb to 500 then climbing right turn to 4000 direct CAMBE and hold, continue climb-in-hold to 4000.

D-ATIS ARR 121.25 DEP 120.525	ORLANDO APP CON 124.8 307.0	ORLANDO TOWER 124.3 (Rwys 18L-36R, 18R-36L) 253.5 118.45 (Rwys 17L-35R, 17R-35L) 253.5	GND CON 126.4 275.8 (East) 134.7 121.8 275.8 (West)	CLNC DEL 341.7	CPDLC
---	---------------------------------------	--	--	--------------------------	-------

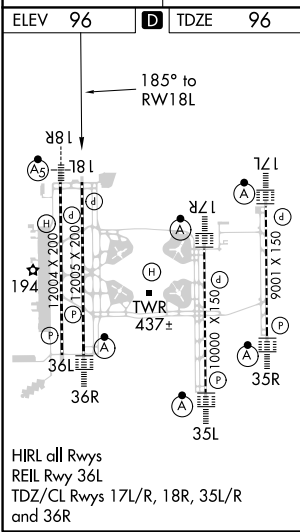
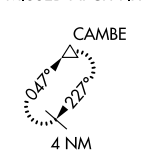
RADAR REQUIRED



SE-3, 10 OCT 2019 to 07 NOV 2019

SE-3, 10 OCT 2019 to 07 NOV 2019

MISSED APCH FIX



ELEV 96	D TDZE 96
<p>500 4000 CAMBE VGSI and RNAV glidepath not coincident (VGSI Angle 3.00/TCH 70).</p> <p>*LNAV only.</p> <p>NAPPA 1.3 NM to RWY 18L</p> <p>COBOP 2200</p> <p>GIPNE 3000</p> <p>HABRA 4000</p> <p>ZANTI 4000</p> <p>GP 3.00° TCH 55</p> <p>1.3 NM 5.2 NM 2.5 NM 3.2 NM 5 NM</p>	
CATEGORY	A B C D
LPV DA	296/40 200 (200-¾)
LNAV/VNAV DA	398/50 302 (400-1)
LNAV MDA	480/55 384 (400-1) 480/60 384 (400-1¼)
C CIRCLING	740-1 644 (700-1) 740-1¾ 644 (700-1¾) 740-2 644 (700-2)