

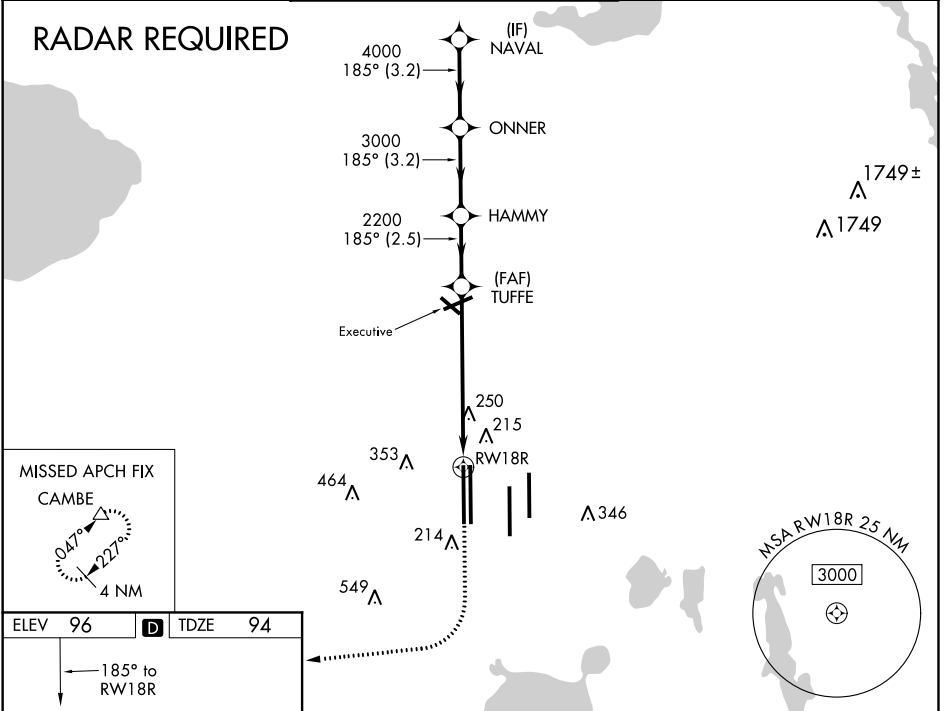
WAAS CH 63212 W18B	APP CRS 185°	Rwy Idg 12005 TDZE 94 Apt Elev 96
--	------------------------	--

RNAV (GPS) RWY 18R

ORLANDO INTL (MCO)

<p>▼ For uncompensated Baro-VNAV systems, LNAV/VNAV NA below -1°C (31°F) or above 54°C (130°F). DME/DME RNP-0.3 NA. Simultaneous approach authorized with Rwy 17L/R. LNAV procedure NA during simultaneous operations. Use of FD or AP providing RNAV track guidance required during simultaneous operations.</p>		<p>MALSR</p>		<p>MISSED APPROACH: Climb to 500 then climbing right turn to 4000 direct CAMBE and hold, continue climb-in-hold to 4000.</p>	
D-ATIS ARR 121.25 DEP 120.525	ORLANDO APP CON 124.8 307.0	ORLANDO TOWER 124.3 (Rwys 18L-36R, 18R-36L) 253.5 118.45 (Rwys 17L-35R, 17R-35L) 253.5	GND CON 126.4 275.8 (East) 121.8 275.8 (West)	CLNC DEL 134.7 341.7	CPDLC

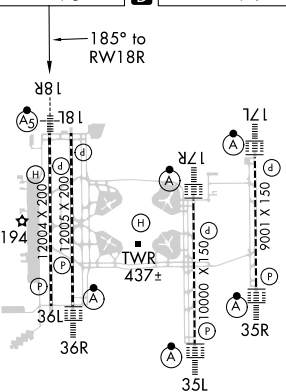
RADAR REQUIRED



MISSED APCH FIX



ELEV 96	D	TDZE 94
----------------	----------	----------------



HIRL all Rwys
REIL Rwy 36L
TDZ/CL Rwys 17L/R, 18R, 35L/R
and 36R

500	4000	CAMBE	VGSIs and RNAV glidepath not coincident. (VGSIs Angle 3.00/TCH 71).	ONNER	NAVAL
*LNAV only.				2200	4000
*1.2 NM to RWY 18R				3000	4000
RWY 18R				2200	GP 3.00° TCH 55
1.2 NM		5.2 NM	2.5 NM	3.2 NM	3.2 NM