

WAAS CH 82313 W36B	APP CRS 005°	Rwy Idg 11621 TDZE 93 Apt Elev 96
--	------------------------	--

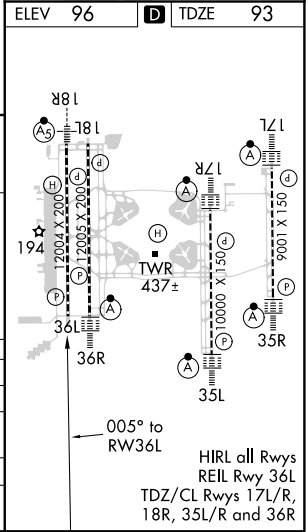
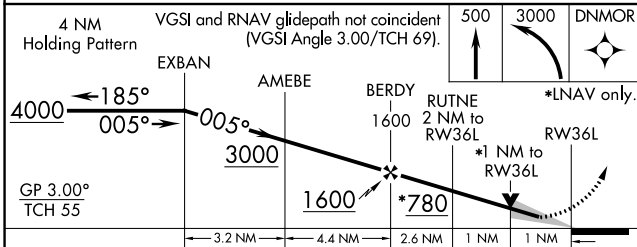
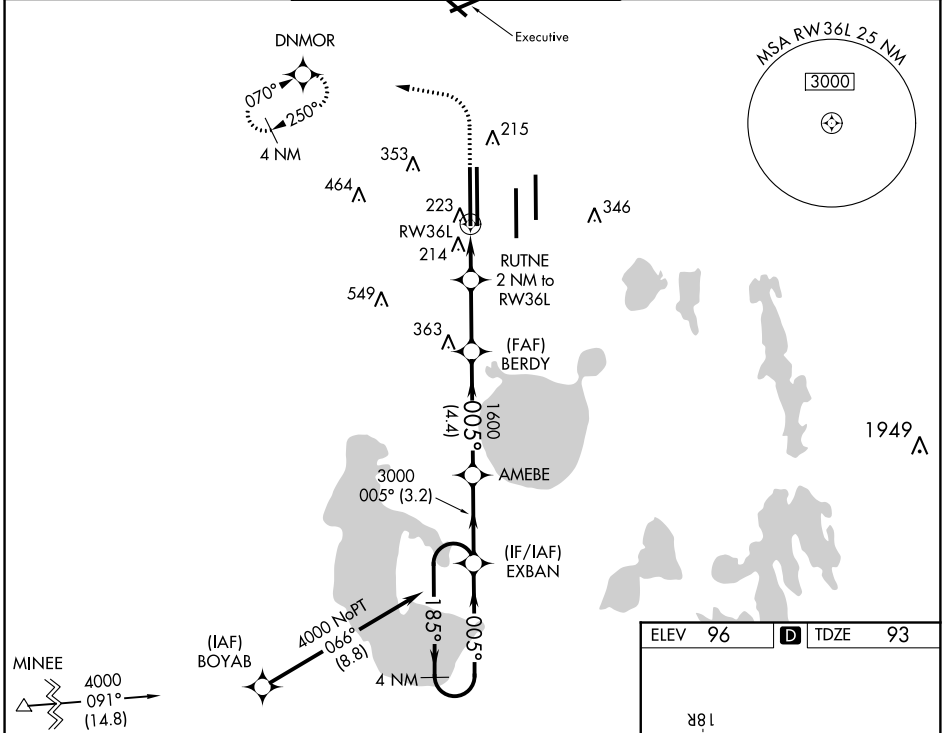
RNAV (GPS) RWY 36L

ORLANDO INTL (MCO)

▼ For uncompensated Baro-VNAV systems, LNAV/VNAV NA below -1°C (31°F) or above 54°C (130°F). Simultaneous approach authorized. LNAV procedure NA during simultaneous operations. Use of FD or AP providing RNAV track guidance required during simultaneous operations. DME/DME RNP-0.3 NA.

MISSED APPROACH: Climb to 500 then climbing left turn to 3000 direct DNMOR and hold, continue climb-in-hold to 3000.

D-ATIS ARR 121.25 DEP 120.525	ORLANDO APP CON 124.8 307.0	ORLANDO TOWER Rwys 18L-36R, 18R-36L 253.5 Rwys 17L-35R, 17R-35L 253.5	GND CON 126.4 275.8 (East) 121.8 275.8 (West)	CLNC DEL 134.7 341.7	CPDLC
---	---------------------------------------	---	---	--	-------



CATEGORY	A	B	C	D
LPV DA		293/40	200 (200-¾)	
LNAV/VNAV DA		412/50	319 (400-1)	
LNAV MDA	480/55	387 (400-1)	480/60	387 (400-1½)
CIRCLING	740-1	644 (700-1)	740-1¾	740-2
			644 (700-1¾)	644 (700-2)

SE-3, 10 OCT 2019 to 07 NOV 2019

SE-3, 10 OCT 2019 to 07 NOV 2019