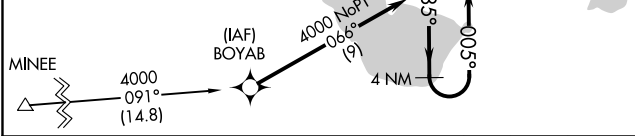
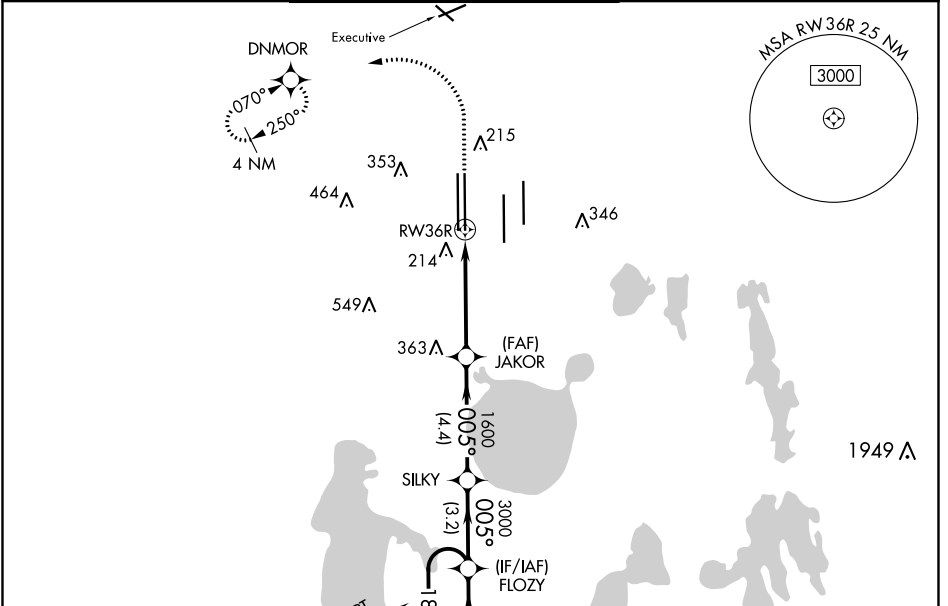


WAAS CH 40212 W36A	APP CRS 005°	Rwy Idg 11601 TDZE 92 Apt Elev 96
--	------------------------	--

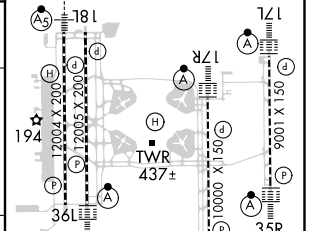
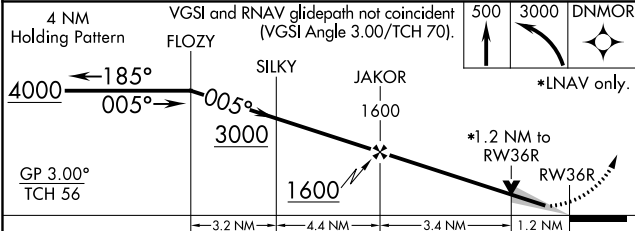
RNAV (GPS) RWY 36R

ORLANDO INTL (MCO)

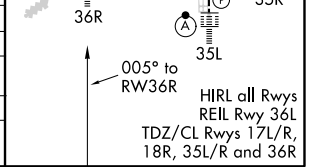
<p>▼ For uncompensated Baro-VNAV systems, LNAV/VNAV NA below -1°C (31°F) or above 54°C (130°F). DME/DME RNP-0.3 NA. Simultaneous approach authorized. LNAV procedure NA during simultaneous operations. Use of FD or AP providing RNAV track guidance required during simultaneous operations. For inop ALS, increase LNAV/VNAV all Cats visibility to RVR 6000.</p>		<p>ALSF-2</p>	<p>MISSED APPROACH: Climb to 500 then climbing left turn to 3000 direct DNMOR and hold, continue climb-in-hold to 3000.</p>		
D-ATIS ARR 121.25 DEP 120.525	ORLANDO APP CON 124.8 307.0	ORLANDO TOWER 124.3 (Rwys 18L-36R, 18R-36L) 253.5 118.45 (Rwys 17L-35R, 17R-35L) 253.5	GND CON 126.4 275.8 (East) 121.8 275.8 (West)	CLNC DEL 134.7 341.7	CPDLC



ELEV 96	D TDZE 92
---------	------------------



CATEGORY	A	B	C	D
LPV DA		292/18	200 (200-1/2)	
LNAV/VNAV DA		454/40	362 (400-3/4)	
LNAV MDA	540/24	448 (500-1/2)	540/45	448 (500-3/4)
C CIRCLING	740-1	644 (700-1)	740-1 3/4	740-2
			644 (700-1 3/4)	644 (700-2)



SE-3, 10 OCT 2019 to 07 NOV 2019

SE-3, 10 OCT 2019 to 07 NOV 2019