

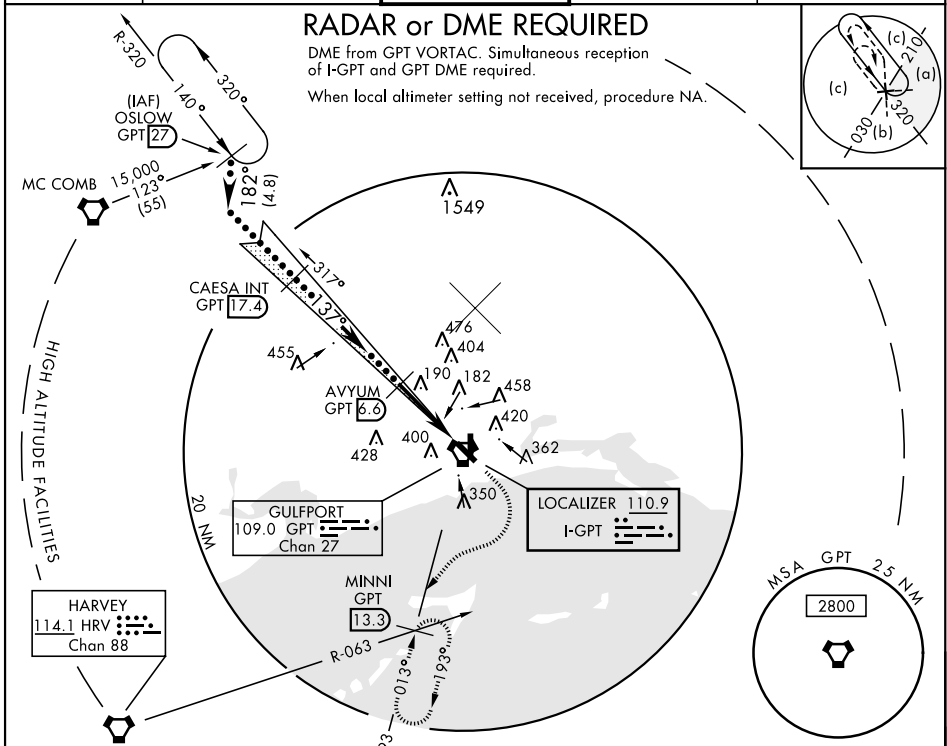
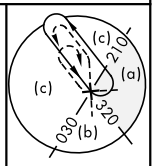
HI-ILS Y or LOC Y RWY 14

LOC I-GPT 110.9	APCH CRS 137°	Rwy Idg TDZE 27 Arpt Elev 29	JAL-576 [USAF]	GULFPORT-BILOXI INTL (KGPT)
* When ALS inop, increase CAT CDE vis to RVR 40, RVR 18 Authorized with use of FD or AP or HUD to DA. ** When ALS inop, increase CAT CDE vis to 1½miles.			MALSR 	MISSED APPROACH: Climb to 500, then climbing right turn to 3000 on GPT VORTAC R-193 to MINNI INT/GPT 13.3 DME and hold.

ATIS ★ 119.45	GULFPORT APP CON 130°-309° 124.6 354.1 310°-129° 127.5 254.25	GULFPORT TOWER ★ 123.7 CTAF 0 339.8	GND CON 120.4 348.6	ASR
-------------------------	---	--	-------------------------------	-----

RADAR or DME REQUIRED

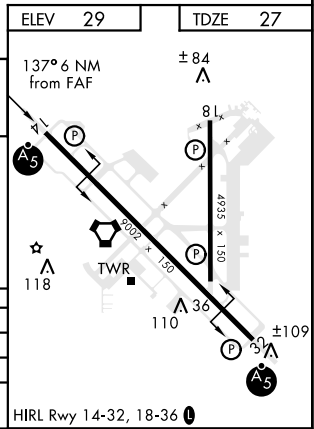
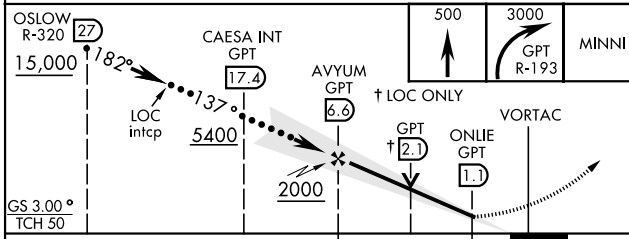
DME from GPT VORTAC. Simultaneous reception of I-GPT and GPT DME required.
 When local altimeter setting not received, procedure NA.



SC-4, 10 OCT 2019 to 07 NOV 2019

SC-4, 10 OCT 2019 to 07 NOV 2019

EMERG SAFE ALT 100 NM 3100	ELEV 29 TDZE 27
----------------------------	-------------------



CATEGORY	C	D	E
S-ILS 14*	227/24	200 (200-½)	
S-LOC 14**	560/55	533 (600-¼)	
CIRCLING	820-2¼ 791 (800-2¼)	820-2½ 791 (800-2½)	820-2¾ 791 (800-2¾)