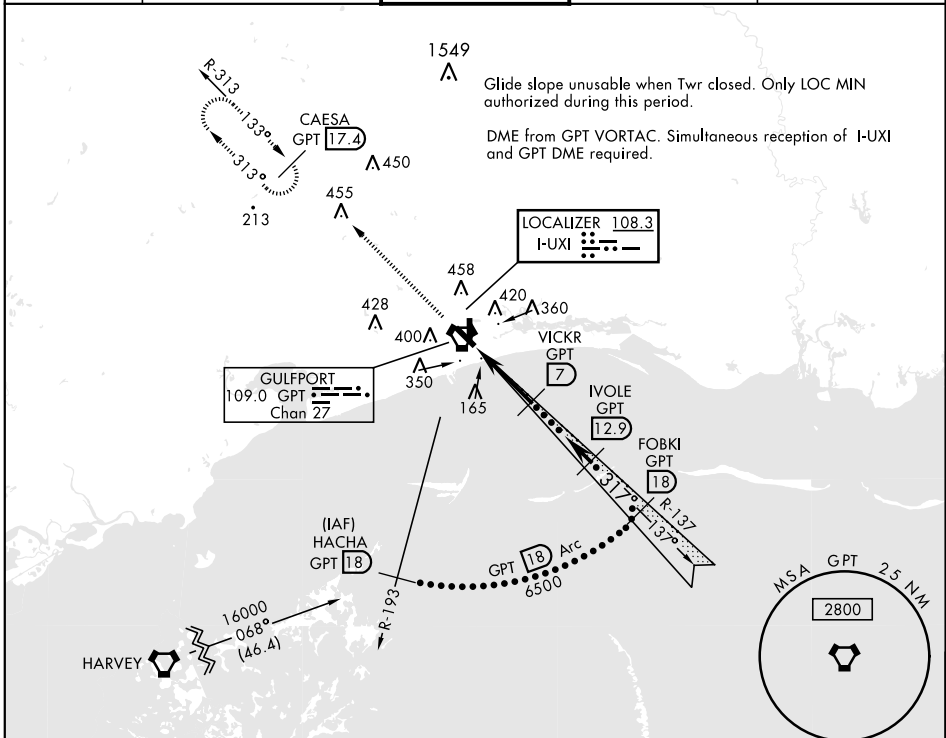


HI-ILS Y or LOC Y RWY 32

LOC I-UXI 108.3	APCH CRS 317°	Rwy Idg TDZE 28 Arpt Elev 29	JAL-576 [USAF]	GULFPORT-BILOXI INTL (KGPT)
*When ALS inop increase CAT E vis to RVR 40, RVR 18 authorized with use of FD or AP or HUD to DA. **When ALS inop increase CAT CDE vis to RVR 55.		MALSR 		MISSED APPROACH: Climb to 2000 on GPT VORTAC R-313 to CAESA/GPT 17.4 DME and hold.
ATIS ★ 119.45	GULFPORT APP CON 130°-309° 124.6 354.1 310°-129° 127.5 254.25	GULFPORT TOWER ★ 123.7 CTAF 339.8	GND CON 120.4 348.6	ASR

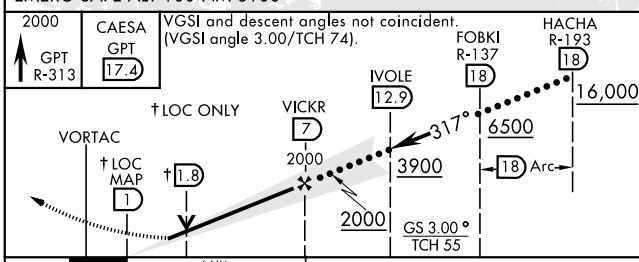


SC-4, 10 OCT 2019 to 07 NOV 2019

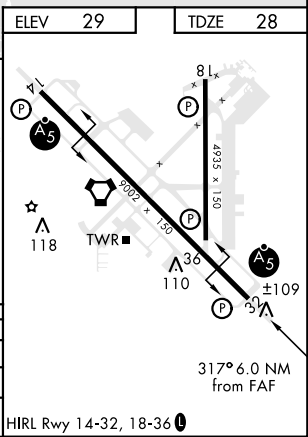
SC-4, 10 OCT 2019 to 07 NOV 2019

RADAR or DME REQUIRED

EMERG SAFE ALT 100 NM 3100



CATEGORY	C	D	E
S-ILS 32 *	228/24	200	(200-1/2)
S-LOC 32 **	380/30	352	(400-5/8)
CIRCLING	820-2 1/4 791 (800-2 1/4)	820-2 1/2 791 (800-2 1/2)	820-2 3/4 791 (800-2 3/4)



HI-ILS Y or LOC Y RWY 32