

LOC I-GPT 110.9	APP CRS 137°	Rwy Idg TDZE Apt Elev	9002 27 29
---------------------------	------------------------	-----------------------------	---------------------------------------

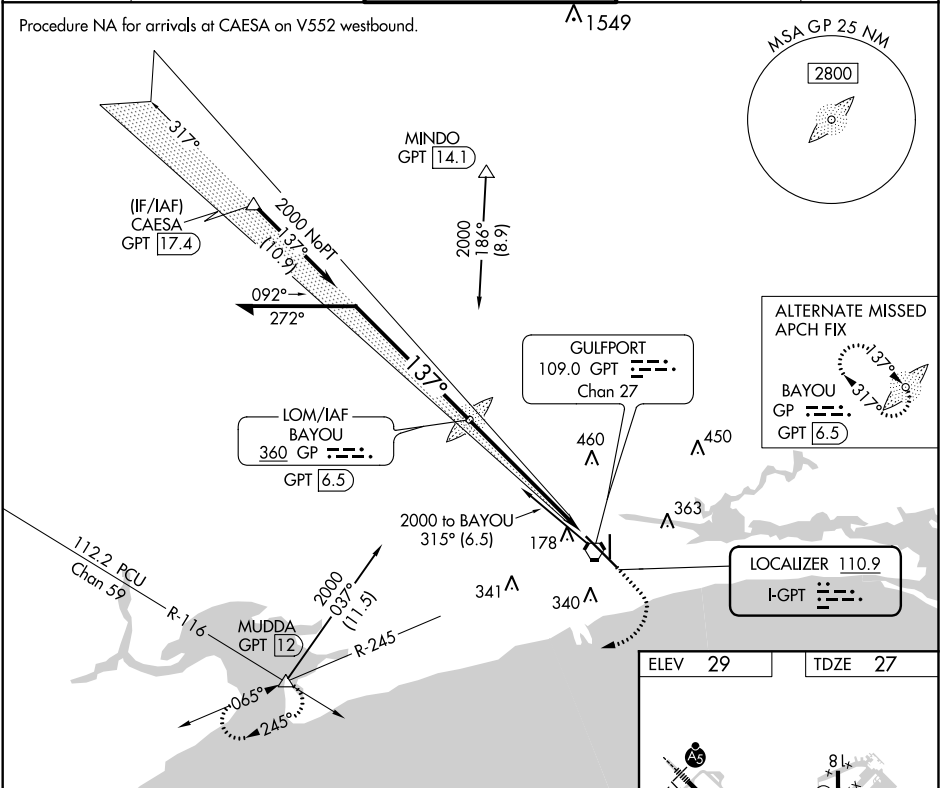
ILS Z RWY 14 (SA CAT II)

GULFPORT-BILOXI INTL (GPT)

Reduced lighting: requires specific OPSPEC, MSPEC, or LOA approval and use of autoland or HUD to touchdown. Procedure NA when tower closed.	MALS R	MISSED APPROACH: Climb to 500 then climbing right turn to 2000 on GPT VORTAC R-245 to MUDDA INT/12 DME and hold.

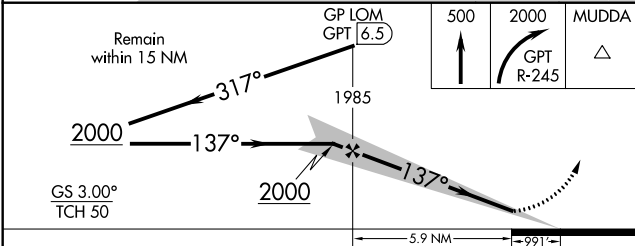
ATIS 119.45	GULFPORT APP CON ★ 127.5 254.25	GULFPORT TOWER ★ 123.7 (CTAF) 0 339.8	GND CON 120.4 348.6	UNICOM 122.95
-----------------------	---	---	-------------------------------	-------------------------

Procedure NA for arrivals at CAESA on V552 westbound.

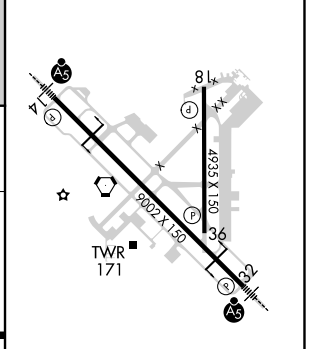


SC-4, 10 OCT 2019 to 07 NOV 2019

SC-4, 10 OCT 2019 to 07 NOV 2019



ELEV 29	TDZE 27
---------	---------



CATEGORY	A	B	C	D
----------	---	---	---	---

S-ILS 14 CAT II RA 113/12 100 DA 127

CATEGORY II ILS - SPECIAL AIRCREW & AIRCRAFT CERTIFICATION REQUIRED

HIRL Rwy 14-32
MIRL Rwy 18-36