

LOC I-GPT 110.9	APP CRS 137°	Rwy Idg TDZE Apt Elev	9002 27 29
---------------------------	------------------------	-----------------------------	---------------------------------------

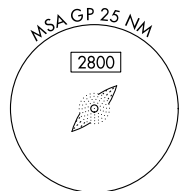
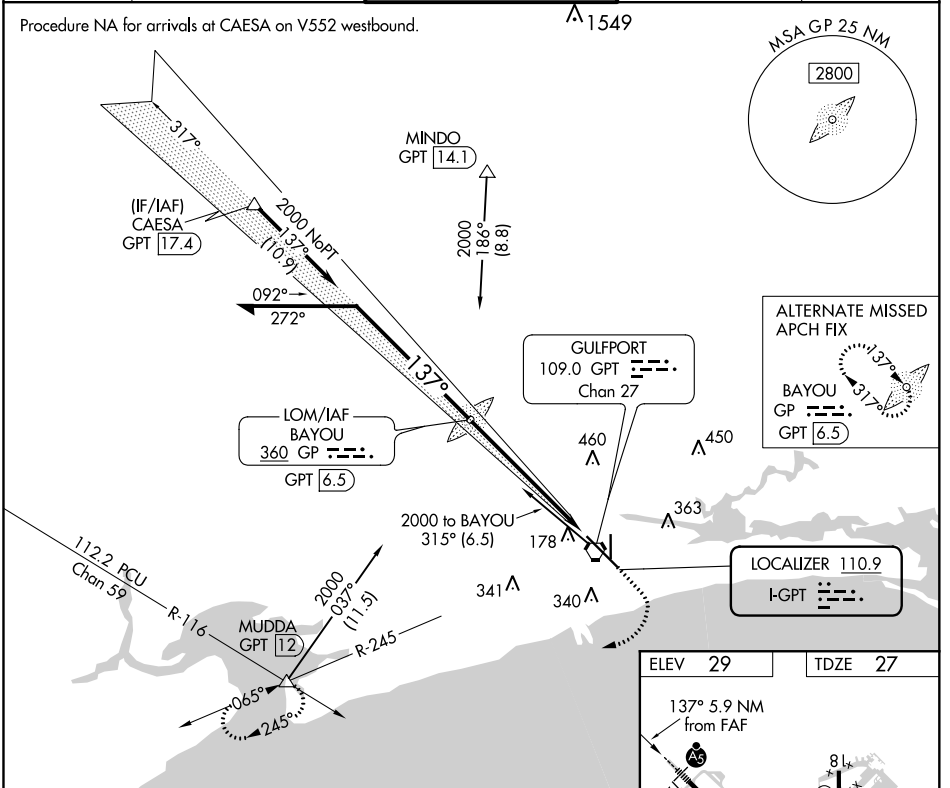
ILS Z or LOC Z RWY 14

GULFPORT-BILOXI INTL (GPT)

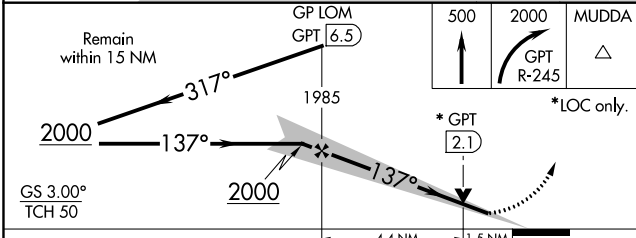
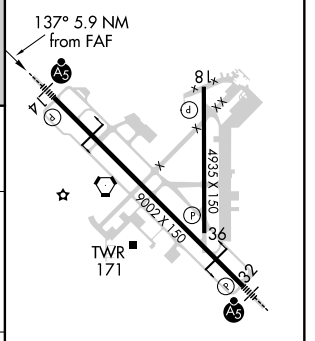
	For inop ALS, increase S-ILS 14 Cat E visibility to RVR 4000 and S-LOC 14 Cat E visibility to 1/2 SM. **RVR 1800 authorized with use of FD or AP or HUD to DA.	MALS R 	MISSED APPROACH: Climb to 500 then climbing right turn to 2000 on GPT VORTAC R-245 to MUDDA INT/12 DME and hold.
--	---	------------	--

ATIS 119.45	GULFPORT APP CON ★ 127.5 254.25	GULFPORT TOWER ★ 123.7 (CTAF) 0 339.8	GND CON 120.4 348.6	UNICOM 122.95
-----------------------	---	---	-------------------------------	-------------------------

Procedure NA for arrivals at CAESA on V552 westbound.



ELEV 29	TDZE 27
---------	---------



CATEGORY	A	B	C	D	E	HIRL Rwy 14-32 MIRL Rwy 18-36 FAF to MAP 5.9 NM
S-ILS 14 **	227/24		200 (200-1/2)			
S-LOC 14	560/24	533 (600-1/2)	560/55		533 (600-1)	
CIRCLING	560-1	640-1	820-2 1/4	820-2 1/2	820-2 3/4	Knots: 60 90 120 150 180 Min:Sec: 5:54 3:56 2:57 2:22 1:58
	531 (600-1)	611 (700-1)	791 (800-2 1/4)	791 (800-2 1/2)	791 (800-2 3/4)	

SC-4, 10 OCT 2019 to 07 NOV 2019

SC-4, 10 OCT 2019 to 07 NOV 2019