

WAAS CH 42812 W36A	APP CRS 002°	Rwy Idg TDZE Apt Elev	4935 27 29
--	------------------------	-----------------------------	---------------------------------------

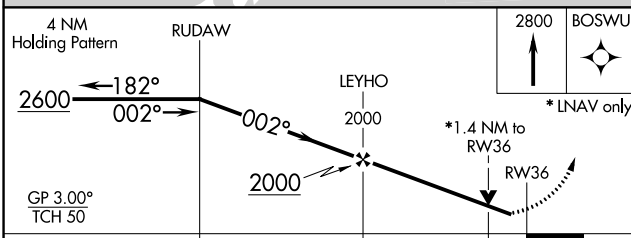
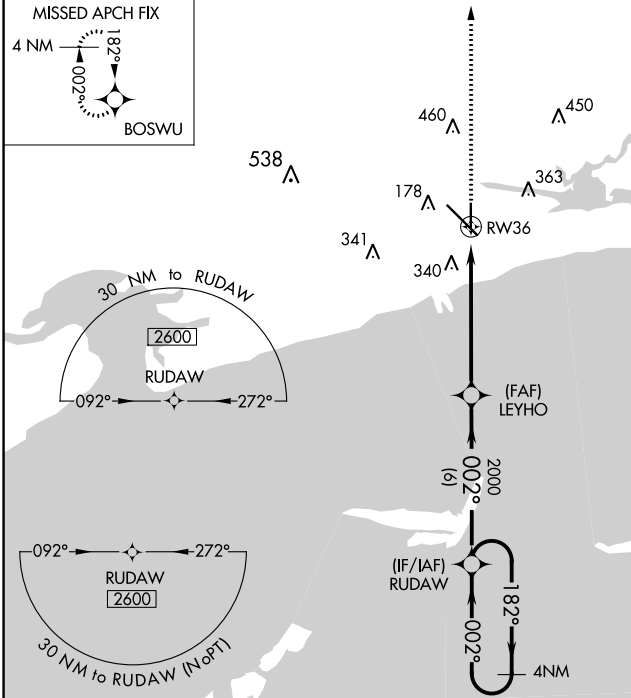
RNAV (GPS) RWY 36

GULFPORT-BILOXI INTL (GPT)

▲ For uncompensated Baro-VNAV systems, LNAV/VNAV NA below -3°C (27°F) or above 54°C (130°F).
ASR Rwy 36 helicopter visibility reduction below ¾ SM NA.
 DME/DME RNP-0.3 NA.

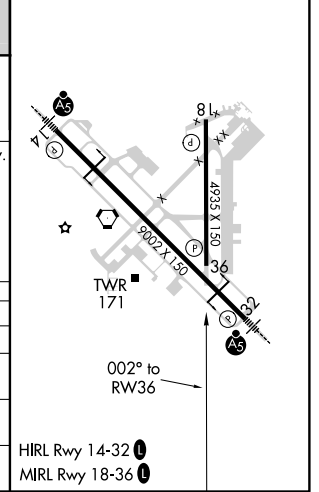
MISSED APPROACH: Climb to 2800 direct BOSWU and hold.

ATIS 119.45	GULFPORT APP CON * 127.5 254.25	GULFPORT TOWER * 123.7 (CTAF) 0 339.8	GND CON 120.4 348.6	UNICOM 122.95
-----------------------	---	---	-------------------------------	-------------------------



ELEV 29	TDZE 27
---------	---------

CATEGORY	A	B	C	D
LPV DA		277-¾	250 (300-¾)	
LNAV/VNAV DA		334-7/8	307 (400-7/8)	
LNAV MDA	520-1	493 (500-1)	520-1¾	493 (500-1¾)
C CIRCLING	520-1 491 (500-1)	640-1 611 (700-1)	820-2¼ 791 (800-2¼)	820-2½ 791 (800-2½)



SC-4, 10 OCT 2019 to 07 NOV 2019

SC-4, 10 OCT 2019 to 07 NOV 2019