

VORTAC GPT 109.0 Chan 27	APP CRS 307°	Rwy Idg TDZE Apt Elev	9002 28 29
---------------------------------------	------------------------	-----------------------------	---------------------------------------

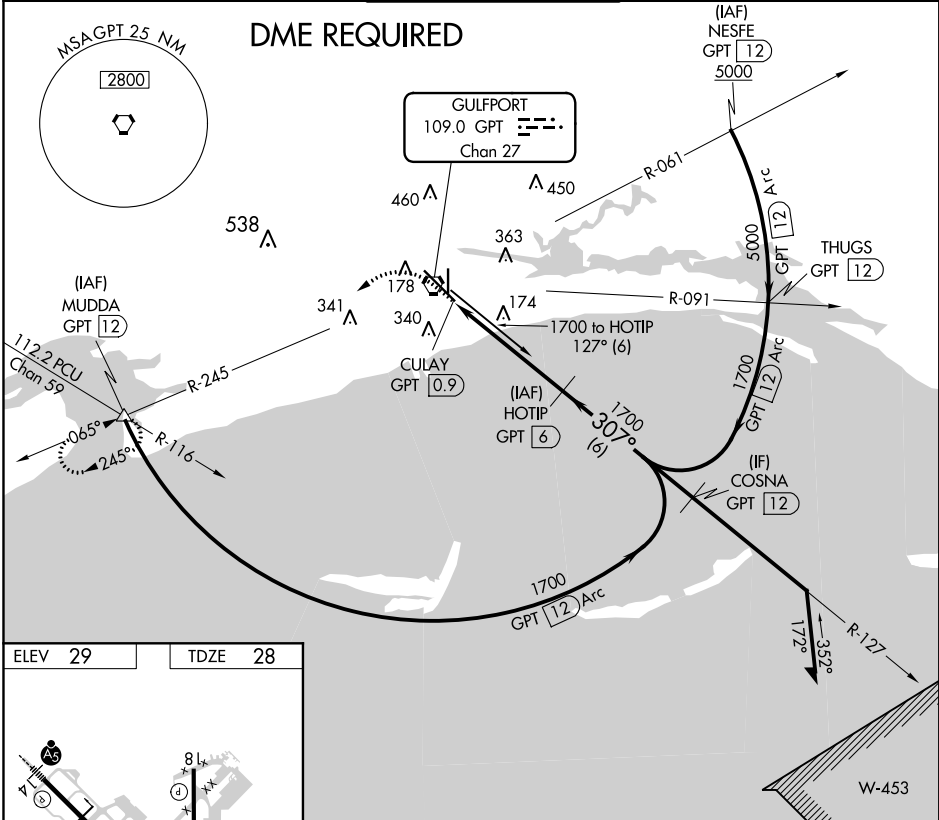
VOR Z RWY 32
GULFPORT-BILOXI INTL (GPT)

▲ DME required.
For inop ALS, increase S-32 Cat C/D/E to RVR 6000.

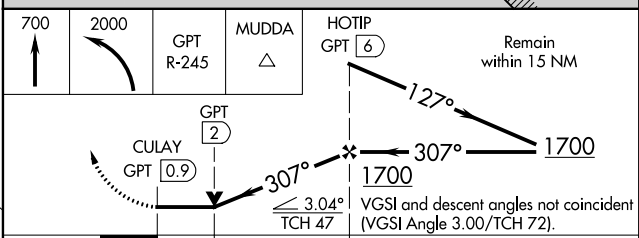
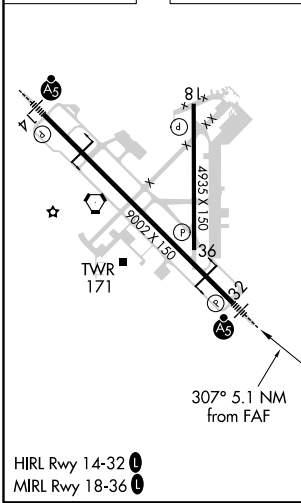
MALSR
AS

MISSED APPROACH: Climb to 700 then climbing left turn to 2000 on GPT VORTAC R-245 to MUDDA INT/12 DME and hold.

ATIS 119.45	GULFPORT APP CON * 127.5 254.25	GULFPORT TOWER * 123.7 (CTAF) 0 339.8	GND CON 120.4 348.6	UNICOM 122.95
-----------------------	---	---	-------------------------------	-------------------------



ELEV 29	TDZE 28
---------	---------



CATEGORY	A	B	C	D	E
S-32	440/24	412 (500-1/2)	440/40	412 (500-3/4)	
C CIRCLING	500-1 471 (500-1)	640-1 611 (700-1)	820-2 1/4 791 (800-2 1/4)	820-2 1/2 791 (800-2 1/2)	820-2 3/4 791 (800-2 3/4)

SC-4, 10 OCT 2019 to 07 NOV 2019

SC-4, 10 OCT 2019 to 07 NOV 2019