

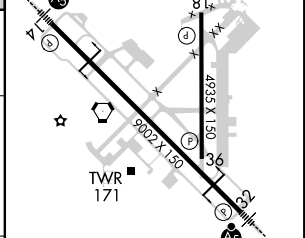
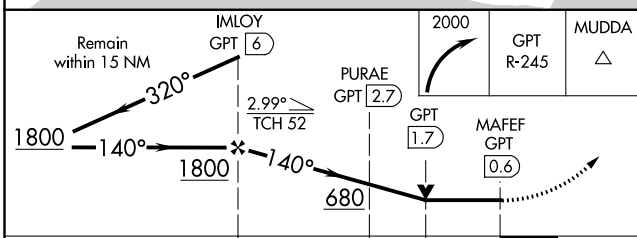
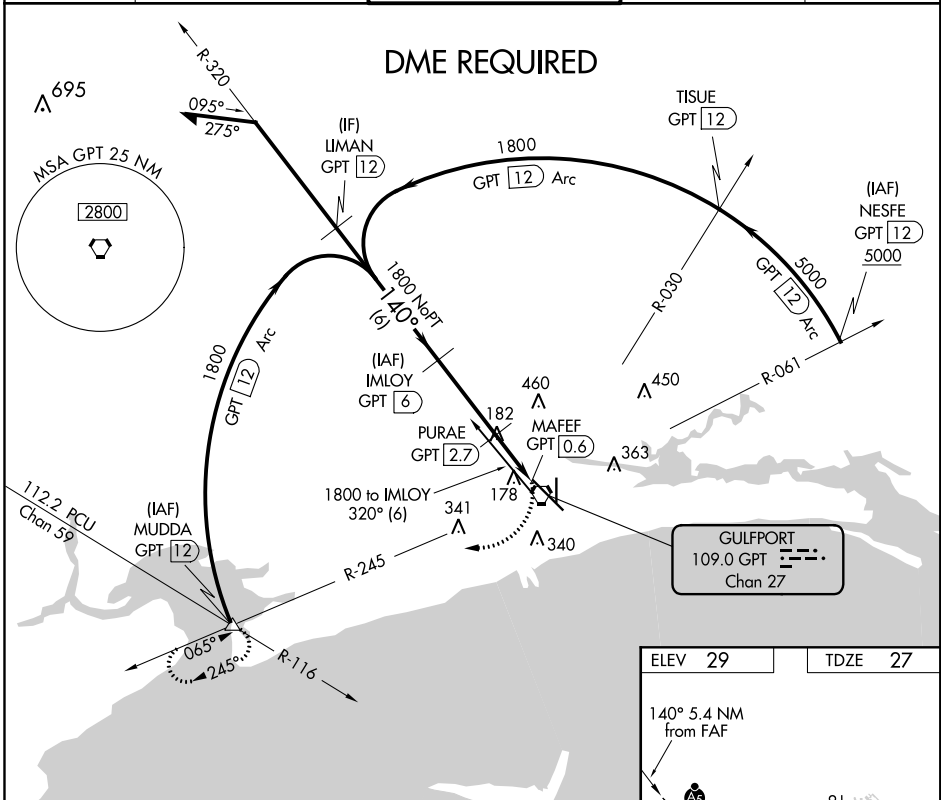
VORTAC GPT 109.0 Chan 27	APP CRS 140°	Rwy Idg TDZE Apt Elev	9002 27 29
---------------------------------------	------------------------	-----------------------------	---------------------------------------

VOR Z or TACAN Z RWY 14

GULFPORT-BILOXI INTL (GPT)

<p>DME required. For inop ALS, increase S-14 Cat C/D/E visibility to RVR 6000.</p>	<p>MALSR</p>	<p>MISSED APPROACH: Climbing right turn to 2000 on GPT VORTAC R-245 to MUDDA INT/12 DME and hold.</p>

ATIS 119.45	GULFPORT APP CON * 127.5 254.25	GULFPORT TOWER * 123.7 (CTAF) 0 339.8	GND CON 120.4 348.6	UNICOM 122.95
-----------------------	---	---	-------------------------------	-------------------------



CATEGORY	A	B	C	D	E
S-14	440/24	413 (500-½)	440/40	413 (500-¾)	
CIRCLING	500-1 471 (500-1)	640-1 611 (700-1)	820-2¼ 791 (800-2¼)	820-2½ 791 (800-2½)	820-2¾ 791 (800-2¾)

ELEV 29	TDZE 27
---------	---------

SC-4, 10 OCT 2019 to 07 NOV 2019

SC-4, 10 OCT 2019 to 07 NOV 2019