


LOC I-CNW <b>110.7</b>	APP CRS <b>174°</b>	Rwy Idg TDZE Apt Elev	<b>8600</b> <b>470</b> <b>470</b>
---------------------------	------------------------	-----------------------------	---

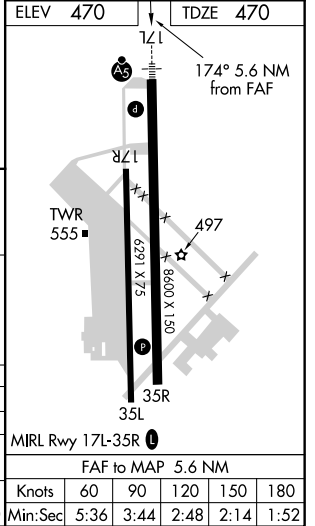
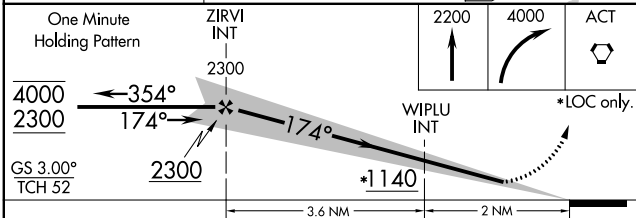
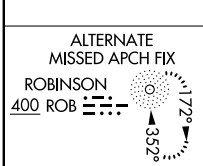
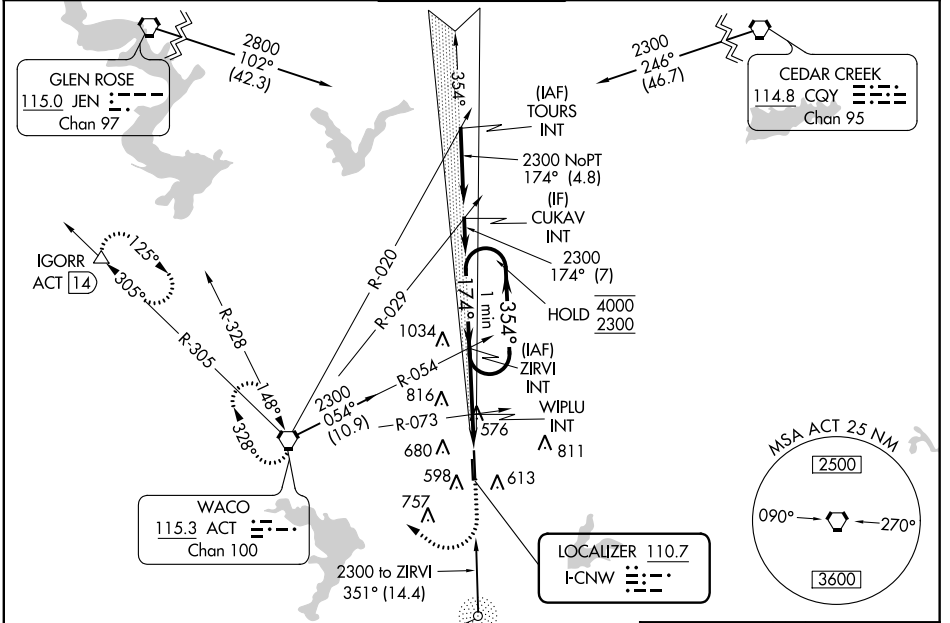
# ILS or LOC RWY 17L

TSTC WACO (CNW)

**NA** For inop ALS, increase S-ILS 17L Cat E visibility to  $\frac{3}{4}$  SM, and ASR S-LOC 17L Cat E to  $\frac{1}{8}$  SM.

**MALSR**  
  
**MISSED APPROACH:** Climb to 2200 then climbing right turn to 4000 direct ACT VORTAC and hold. (TACAN aircraft continue on ACT VORTAC R-305 to IGORR/ACT 14 DME and hold SE, RT, 305° inbound)

AWOS-3 <b>134.225</b>	WACO APP CON * <b>127.65 227.125</b>	TSTC TOWER * <b>124.0(CTAF) 255.7</b>	GND CON <b>121.70</b>	UNICOM <b>122.95</b>
--------------------------	---	--	--------------------------	-------------------------



CATEGORY	A	B	C	D	E
S-ILS 17L	670- $\frac{1}{2}$ 200 (200- $\frac{1}{2}$ )				
S-LOC 17L	860- $\frac{1}{2}$	390 (400- $\frac{1}{2}$ )	860- $\frac{5}{8}$ 390 (400- $\frac{5}{8}$ )		
CIRCLING	940-1 470 (500-1)	960-1 490 (500-1)	1040-1 $\frac{1}{2}$ 570 (600-1 $\frac{1}{2}$ )	1040-2 570 (600-2)	1180-2 $\frac{1}{2}$ 710 (800-2 $\frac{1}{2}$ )

MRL Rwy 17L-35R					
FAF to MAP 5.6 NM					
Knots	60	90	120	150	180
Min:Sec	5:36	3:44	2:48	2:14	1:52

SC-3, 10 OCT 2019 to 07 NOV 2019

SC-3, 10 OCT 2019 to 07 NOV 2019