

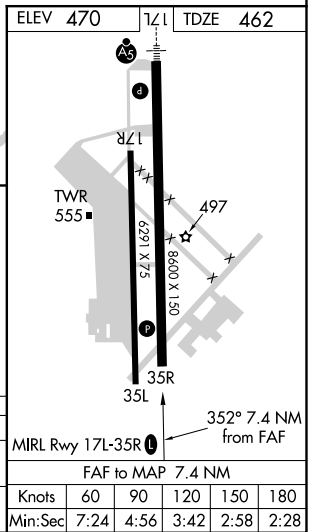
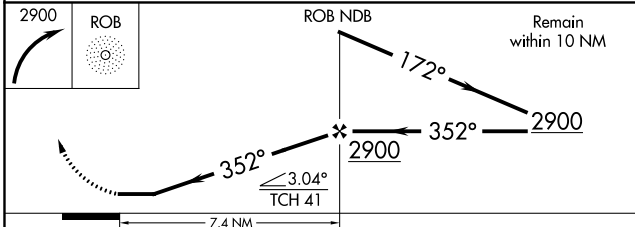
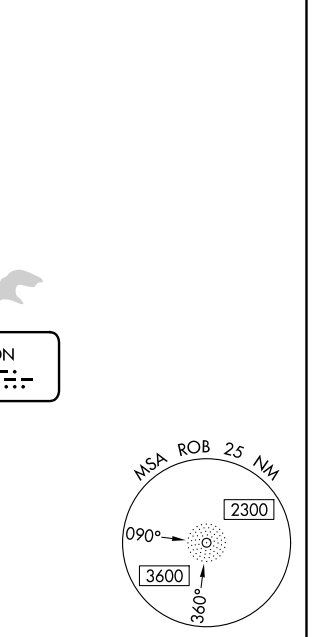
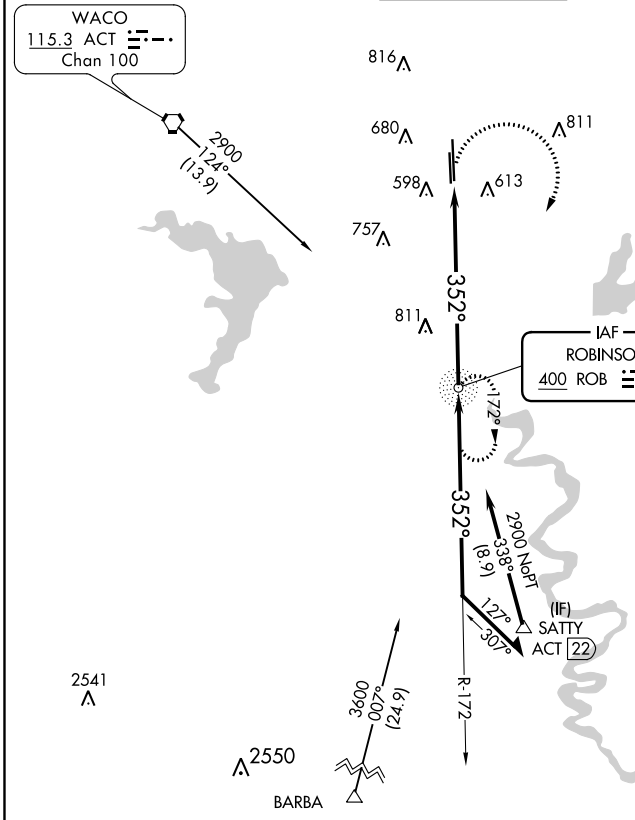
NDB ROB	APP CRS	Rwy Idg	8600
<b>400</b>	<b>352°</b>	TDZE	<b>462</b>
		Apt Elev	<b>470</b>

# NDB RWY 35R

TSTC WACO (CNW)

<b>ASR</b>	MISSED APPROACH: Climbing right turn to 2900 direct ROB NDB and hold.			
------------	---	--	--	--

AWOS-3 <b>134.225</b>	WACO APP CON * <b>127.65 227.125</b>	TSTC TOWER * <b>124.0(CTAF) 255.7</b>	GND CON <b>121.7 0</b>	UNICOM <b>122.95</b>
--------------------------	---	--	---------------------------	-------------------------



CATEGORY	A		B		C		D	
	1200-1	738 (800-1)	730 (800-1)	730 (800-2)	1200-2	738 (800-2)	1200-2 1/4	730 (800-2 1/4)
S-35R	1200-1	738 (800-1)	730 (800-1)	730 (800-2)	1200-2	738 (800-2)	1200-2 1/4	730 (800-2 1/4)
<b>C</b> CIRCLING	1200-1	730 (800-1)	730 (800-1)	730 (800-2)	1200-2	738 (800-2)	1200-2 1/4	730 (800-2 1/4)

FAF to MAP 7.4 NM		60	90	120	150	180
Knots		60	90	120	150	180
Min:Sec		7:24	4:56	3:42	2:58	2:28

SC-3, 10 OCT 2019 to 07 NOV 2019

SC-3, 10 OCT 2019 to 07 NOV 2019