


WAAS CH 73020 W17A	APP CRS 174°	Rwy Idg 10.4° TDZE 470 Apt Elev 470	8600
--	------------------------	--	-------------

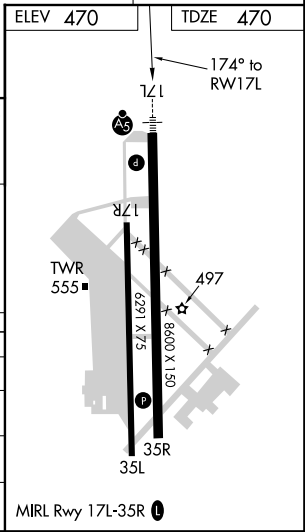
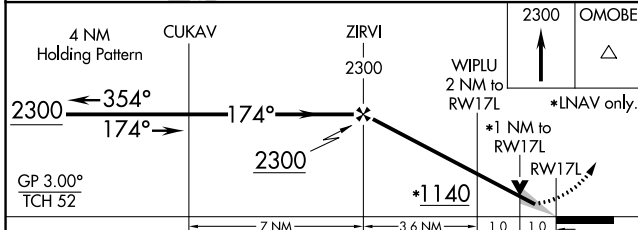
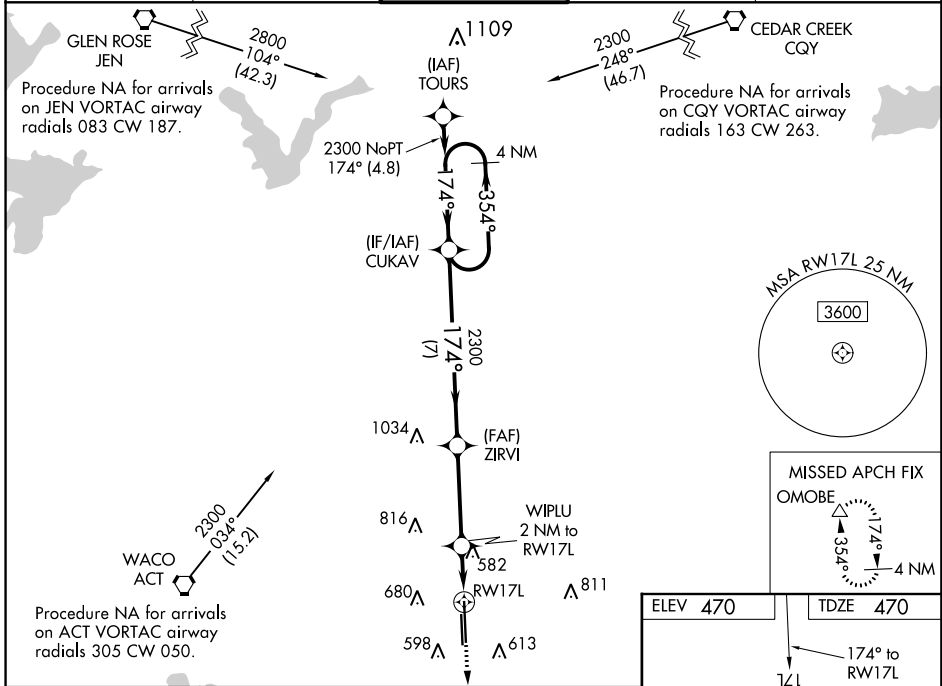
RNAV (GPS) RWY 17L

TSTC WACO (CNW)

ASR Baro-VNAV NA when using Waco Rgnl altimeter setting. DME/DME RNP-0.3 NA. VDP NA with Waco Regl altimeter setting. When local altimeter setting not received, use Waco Rgnl altimeter setting and increase all DA 26 feet and all MDA 40 feet, increase LNAV/VNAV all Cats and LNAV Cats C/D visibility 1/8 mile and Circling Cat C visibility 1/4 mile. For uncompensated Baro-VNAV systems, LNAV/VNAV NA below -15°C (5°F) or above 54°C (130°F).

MALS  MISSED APPROACH: Climb to 2300 direct OMOBE and hold.

AWOS-3 134.225	WACO APP CON ★ 127.65 227.125	TSTC TOWER ★ 124.0 (CTAF) 255.7	GND CON 121.7 0	UNICOM 122.95
--------------------------	---	---	---------------------------	-------------------------



CATEGORY	A	B	C	D
LPV DA		670-1/2	200 (200-1/2)	
LNAV/VNAV DA		818-5/8	348 (400-5/8)	
LNAV MDA	840-1/2	370 (400-1/2)	840-5/8	370 (400-5/8)
CIRCLING	940-1 470 (500-1)	960-1 490 (500-1)	1040-1 1/2 570 (600-1 1/2)	1040-2 570 (600-2)

SC-3, 10 OCT 2019 to 07 NOV 2019

SC-3, 10 OCT 2019 to 07 NOV 2019