

LOC/DME I-TUC <b>111.7</b> Chan <b>54</b>	APP CRS <b>344°</b>	Rwy ldg TDZE <b>9426</b> <b>387</b> Apt Elev <b>432</b>
---	------------------------	---

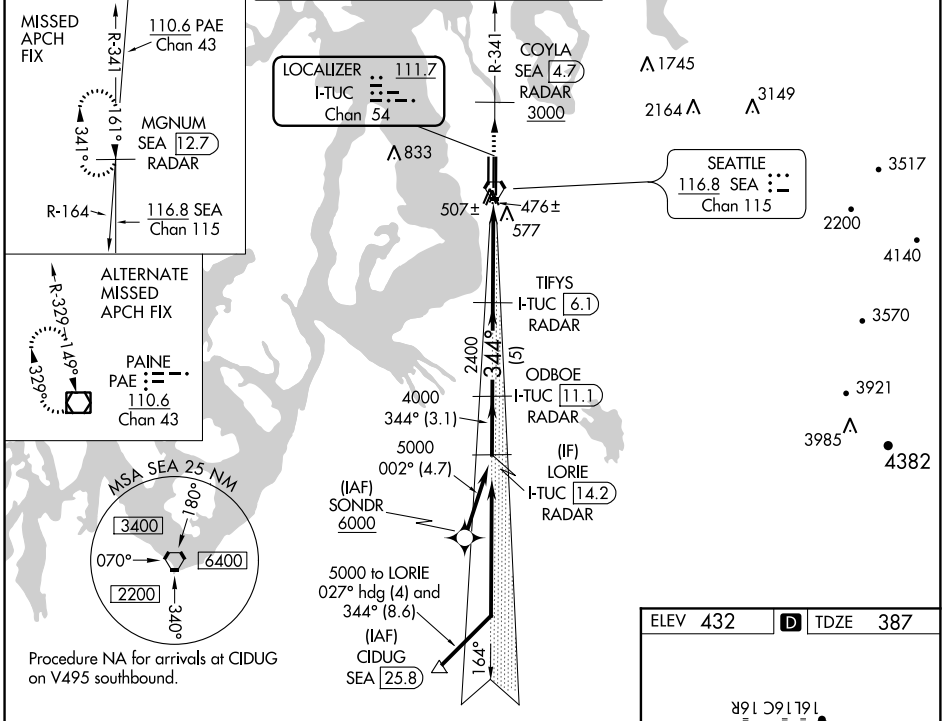
# ILS RWY 34C (SA CAT I & II)

SEATTLE-TACOMA INTL (SEA)

DME or RADAR required. From SONDR: RNAV 1-GPS required.

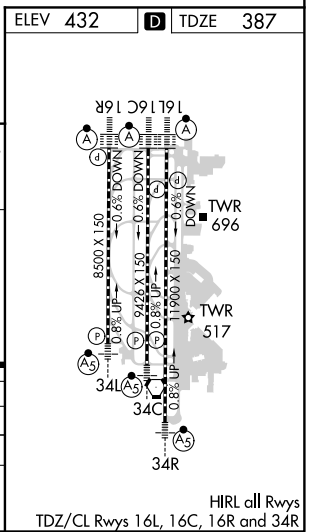
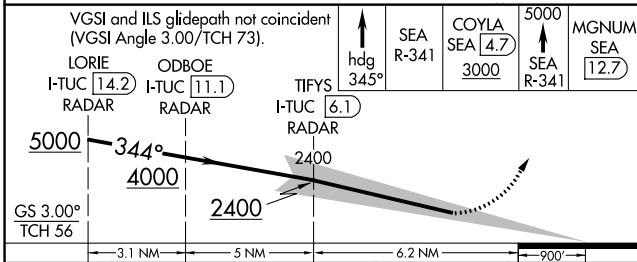
**MALS R** MISSED APPROACH: Climb on heading 345° and outbound on SEA VORTAC R-341 to cross COYLA/SEA 4.7 DME/RADAR at or above 3000 then climb to 5000 on SEA VORTAC R-341 to MGNUM/SEA 12.7 DME/RADAR and hold, continue climb-in-hold to 5000.

D-ATIS <b>118.0</b>	SEATTLE APP CON <b>133.65 273.45</b>	SEATTLE TOWER <b>119.9 239.3</b> (Rwys 16L, 16C, 34C, 34R) <b>120.95 239.3</b> (Rwys 16R, 34L)	GND CON <b>121.7</b>	CLNC DEL <b>128.0</b>	CPDLC
------------------------	---	--	-------------------------	--------------------------	-------



NW-1, 10 OCT 2019 to 07 NOV 2019

NW-1, 10 OCT 2019 to 07 NOV 2019



VGSI and ILS glidepath not coincident (VGSI Angle 3.00/TCH 73).	↑ hdg 345°	SEA R-341	COYLA SEA 4.7	5000 SEA R-341	MGNUM SEA 12.7
LORIE I-TUC 14.2 RADAR	ODBOE I-TUC 11.1 RADAR	TIFYS I-TUC 6.1 RADAR			
5000	4000	2400			
3.1 NM	5 NM	6.2 NM	90°		
CATEGORY	A	B	C	D	
S-ILS 34C	SA CAT I	RA 231/14	150	DA 537	
S-ILS 34C	SA CAT II	RA 112/12	100	DA 487	

## SA CATEGORY I & II ILS - SPECIAL AIRCREW & AIRCRAFT CERTIFICATION REQUIRED

HIRL all Rwys TDZ/CL Rwys 16L, 16C, 16R and 34R