

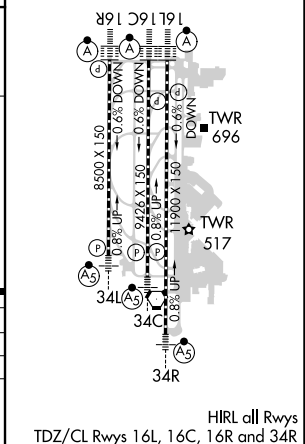
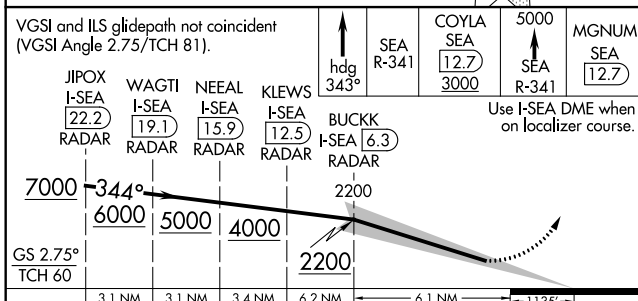
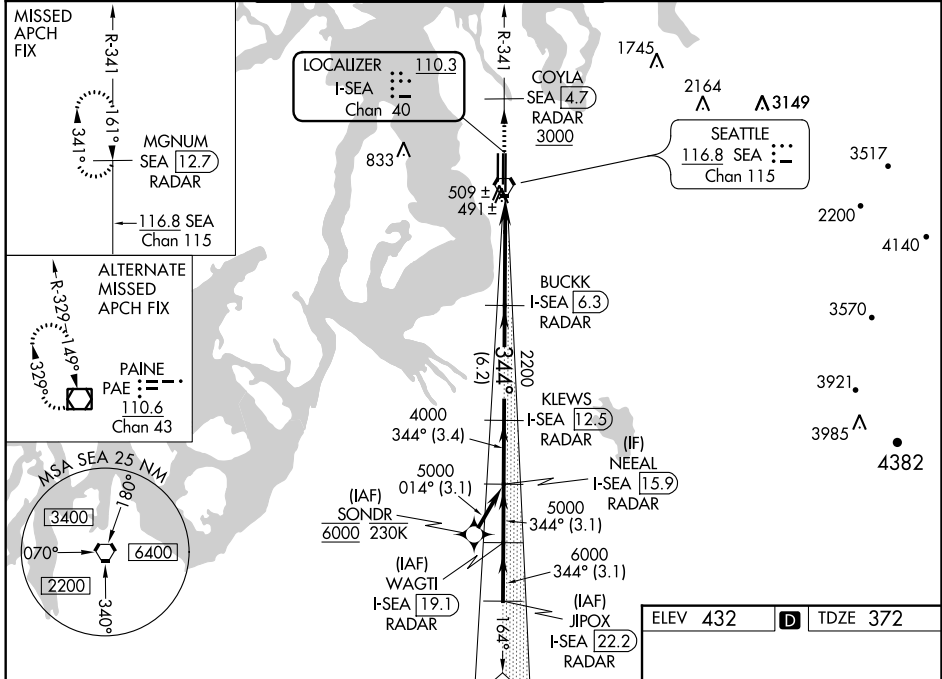
LOC/DME I-SEA <b>110.3</b> Chan <b>40</b>	APP CRS <b>344°</b>	Rwy Idg TDZE Apt Elev	<b>11900</b> <b>372</b> <b>432</b>
---	------------------------	-----------------------------	--

# ILS RWY 34R (SA CAT I & II)

SEATTLE-TACOMA INTL (SEA)

From SONDR: RNAV 1-GPS required. DME or RADAR required.		MALSR	MISSED APPROACH: Climb on heading 343° and outbound on SEA VORTAC R-341 to cross COYLA/SEA 4.7 DME/RADAR at or above 3000 then climb to 5000 on SEA VORTAC R-341 to MGNUM/SEA 12.7 DME/RADAR and hold, continue climb-in-hold to 5000.
Simultaneous approach authorized with Rwy 34L. SA CAT I: Requires specific OPSPEC, MSPEC, or LOA approval and use of HUD to DH. SA CAT II: Reduced lighting: Requires specific OPSPEC, MSPEC, or LOA approval and use of autoland or HUD to touchdown.			

D-ATIS <b>118.0</b>	SEATTLE APP CON <b>133.65 273.45</b>	SEATTLE TOWER. <b>119.9 239.3</b> (Rwys 16L, 16C, 34C, 34R) <b>120.95 239.3</b> (Rwys 16R, 34L)	GND CON <b>121.7</b>	CLNC DEL <b>128.0</b>	CPDLC
------------------------	---	---	-------------------------	--------------------------	-------



VGSI and ILS glidepath not coincident (VGSI Angle 2.75/TCH 81).	hdg R-341 343°	SEA R-341 3000	COYLA SEA 12.7 3000	5000 SEA R-341 3000	MGNUM SEA 12.7
JIPOX I-SEA 22.2 RADAR	WAGTI I-SEA 19.1 RADAR	NEAL I-SEA 15.9 RADAR	KLEWS I-SEA 12.5 RADAR	BUCKK I-SEA 6.3 RADAR	Use I-SEA DME when on localizer course.
7000	6000	5000	4000	2200	
GS 2.75% TCH 60	3.1 NM	3.1 NM	3.4 NM	6.2 NM	6.1 NM
CATEGORY	A	B	C	D	
S-ILS 34R	SA CAT I	RA 250/14	150	DA 522	
S-ILS 34R	SA CAT II	RA 200/12	100	DA 472	

**SA CATEGORY I & II ILS - SPECIAL AIRCREW & AIRCRAFT CERTIFICATION REQUIRED**

SEATTLE, WASHINGTON  
Amdt 3 28FEB19

47°27'N-122°19'W

SEATTLE-TACOMA INTL (SEA)  
**ILS RWY 34R (SA CAT I & II)**

HIRL all Rwys  
TDZ/CL Rwys 16L, 16C, 16R and 34R

NW-1, 10 OCT 2019 to 07 NOV 2019

NW-1, 10 OCT 2019 to 07 NOV 2019