

MOUNTAIN NINE DEPARTURE

AL-582 (FAA)

SEATTLE-TACOMA INTL (SEA)
SEATTLE, WASHINGTON

D-ATIS
118.0
CLNC DEL
128.0
CPDLC
SEATTLE DEP CON
119.2 284.7

VANCOUVER
115.9 YVR Chan 106
N49°04.64'
W123°08.94'
L-1, H-1

PRINCETON
113.9 YDC Chan 86
N49°22.89'
W120°22.42'
H-1

**TOP ALTITUDE:
ASSIGNED BY ATC**

CRANBROOK
112.1 YXC Chan 58
N49°33.30'
W116°05.26'
H-1

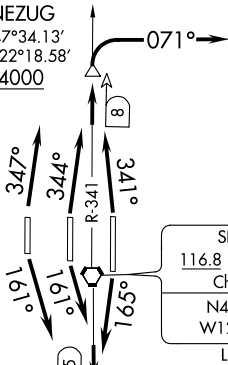
WHATCOM
113.0 HUH Chan 77
N48°56.72'
W122°34.76'
L-1, H-1

PAINE
110.6 PAE Chan 43
N47°55.19'
W122°16.67'
L-1, H-1

NEZUG
N47°34.13'
W122°18.58'
4000

SPOKANE
115.5 GEG Chan 102
N47°33.90'
W117°37.61'
L-13, H-1

EPHRATA
112.6 EPH Chan 73
N47°22.68'
W119°25.44'
L-13, H-1



SEATTLE
116.8 SEA Chan 115
N47°26.12'
W122°18.58'
L-1, H-1

NICHY
N47°21.13'
W122°18.58'
3000

MULLAN PASS
117.8 MLP Chan 125
N47°27.41'
W115°38.76'
L-13, H-1

MOSES LAKE
115.0 MWH Chan 97
N47°12.65'
W119°19.01'
L-13, H-1

ELLENSBURG
117.9 ELN Chan 126
N47°01.46'
W120°27.50'
L-13, H-1

YAKIMA
116.0 YKM Chan 107
N46°34.21'
W120°26.68'
L-13, H-1

PASCO
109.8 PSC Chan 35
N46°16.22'
W119°07.04'
L-13

TAKEOFF MINIMUMS

Rwys 16L/C/R, 34 L/C/R: Standard.

NOTE: Rwy 16L: Minimum climb of 560' per NM to 3000.

NOTE: Rwy 16C: Minimum climb of 515' per NM to 3000.

NOTE: Rwy 16R: Minimum climb of 500' per NM to 3000.

NOTE: Rwys 34L/C/R: Minimum climb of 580' per NM to 4000.

NOTE: RADAR and DME required.

(NARRATIVE ON FOLLOWING PAGE)

NOTE: Chart not to scale.

NW-1, 10 OCT 2019 to 07 NOV 2019

NW-1, 10 OCT 2019 to 07 NOV 2019

MOUNTAIN NINE DEPARTURE

SEATTLE, WASHINGTON
SEATTLE-TACOMA INTL (SEA)