

# RNAV (RNP) Z RWY 34R

SEATTLE-TACOMA INTL (SEA)

APP CRS	Rwy Idg	<b>11900</b>
<b>344°</b>	TDZE	<b>372</b>
	Apt Elev	<b>432</b>

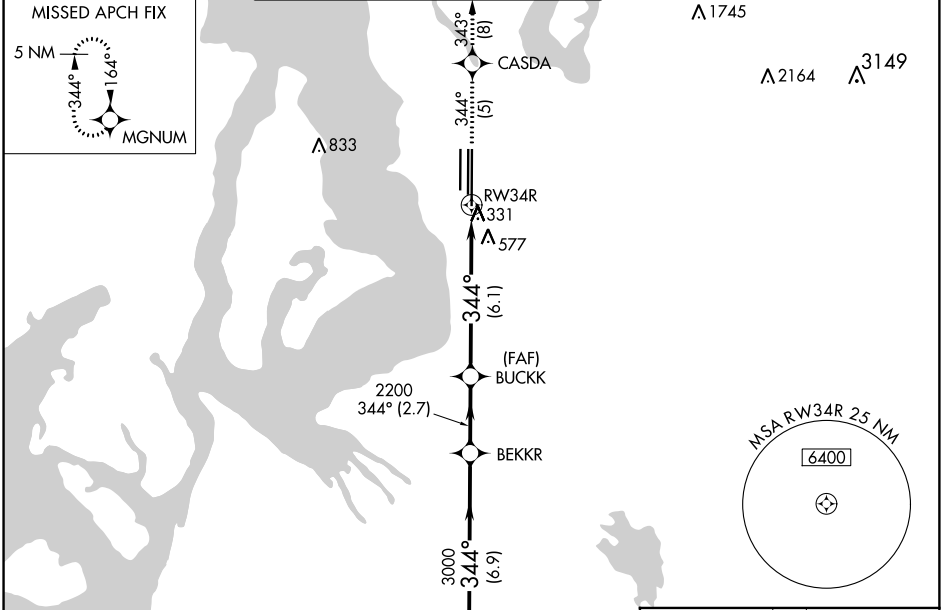
RNP AR APCH.

Simultaneous approach authorized. For uncompensated Baro-VNAV systems, procedure NA below -6°C or above 54°C. Use of FD or AP required during simultaneous operations. For inop ALS, increase RNP 0.28 all Cats visibility to 1 3/8 SM. Inop table does not apply to RNP 0.30.

MALSRL

MISSED APPROACH: Climb to 5000 on track 344° to CASDA and on track 343° to MGNUM and hold, continue climb-in-hold to 5000.

D-ATIS	SEATTLE APP CON	SEATTLE TOWER	GND CON	CLNC DEL	CPDLC
<b>118.0</b>	<b>133.65 273.45</b>	<b>119.9 239.3</b> (Rwys 16L, 16C, 34C, 34R) <b>120.95 239.3</b> (Rwys 16R, 34L)	<b>121.7</b>	<b>128.0</b>	



MISSED APCH FIX

5 NM

MGNUM

344° 164°

Λ 833

Λ 1745

Λ 2164

Λ 3149

343° (8)

CASDA

344° (5)

RW34R

A331

Λ 577

344° (6.1)

(FAF) BUCKK

2200 344° (2.7)

BEKKR

3000 344° (6.9)

(IF) NEEL

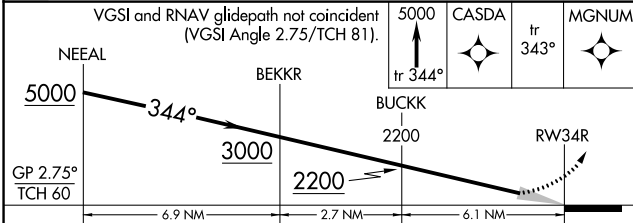
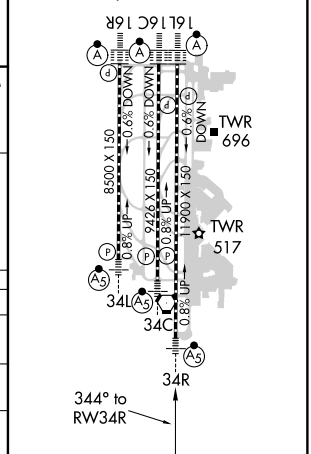
(IAF) SONDR

6000 230K (RNP 0.30)

5000 014° (3.1)

ELEV 432	TDZE 372
----------	----------

HIRL all Rwys TDZ/CL Rwys 16L, 16C, 16R and 34R



CATEGORY	A	B	C	D
RNP 0.28 DA		867/50	495 (500-1)	
RNP 0.30 DA		880-1 1/2	508 (500-1 1/2)	

**AUTHORIZATION REQUIRED**