


LOC/DME I-IDA <b>111.1</b> Chan <b>48</b>	APP CRS <b>206°</b>	Rwy Idg <b>9002</b> TDZE <b>4735</b> Apt Elev <b>4744</b>
---	------------------------	---

# ILS or LOC RWY 21

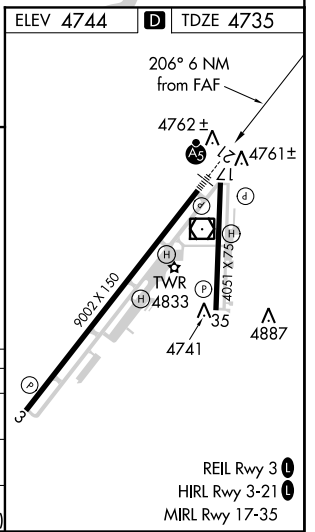
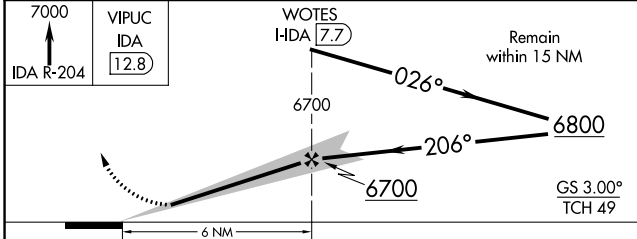
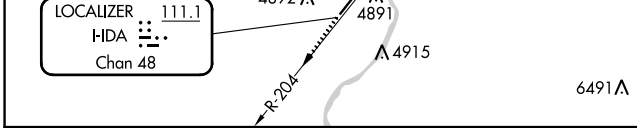
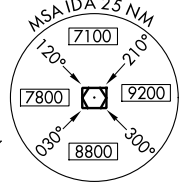
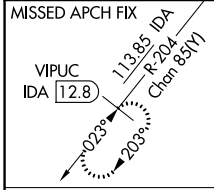
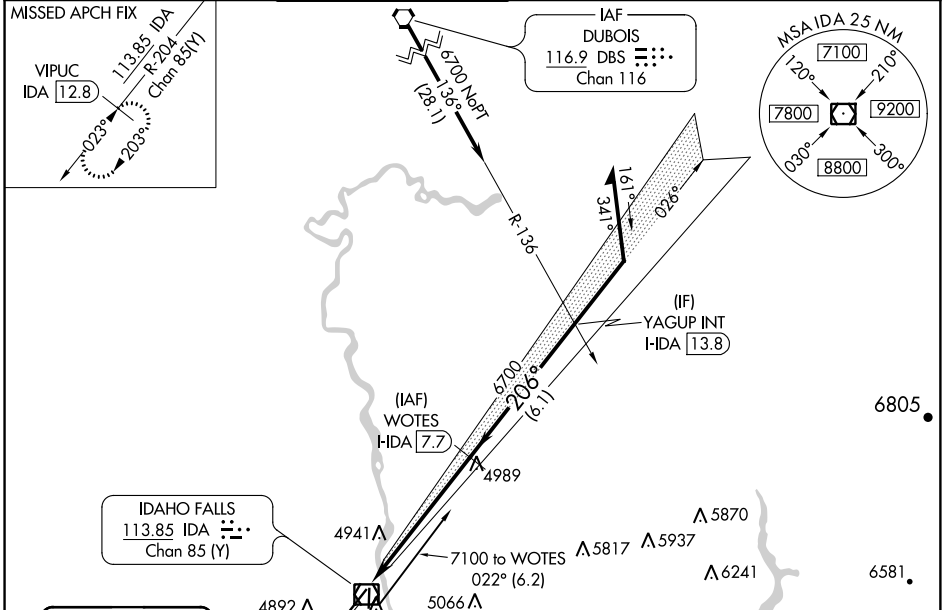
IDAHO FALLS RGNL (IDA)

DME required.

**⚠** For inop ALS, increase S-ILS 21 all Cats visibility to RVR 4000 and S-LOC 21 all Cats visibility to RVR 5500.  
\*RVR 1800 authorized with the use of FD or AP or HUD to DA.

MALSR  MISSED APPROACH: Climb to 7000 on IDA VOR/DME R-204 to VIPUC/12.8 DME and hold.

ATIS <b>135.325</b>	SALT LAKE CENTER <b>128.35 239.25</b>	IDAHO FALLS TOWER * <b>118.5 (CTAF) 0 257.8</b>	GND CON <b>121.7</b>	CLNC DEL <b>121.7</b>	GCO <b>121.725</b>	UNICOM <b>122.95</b>
------------------------	--	--	-------------------------	--------------------------	-----------------------	-------------------------



CATEGORY	A	B	C	D	E
S-ILS 21	4935/24		200 (200-½)		
S-LOC 21	5040/24		305 (300-½)		
CIRCLING	5200-1 456 (500-1)	5300-1 556 (600-1)	5400-1¼ 656 (700-1¾)	5420-2¼ 676 (700-2¼)	5420-2½ 676 (700-2½)

# IDAHO FALLS RGNL (IDA)

## ILS or LOC RWY 21

NW-1, 10 OCT 2019 to 07 NOV 2019

NW-1, 10 OCT 2019 to 07 NOV 2019