

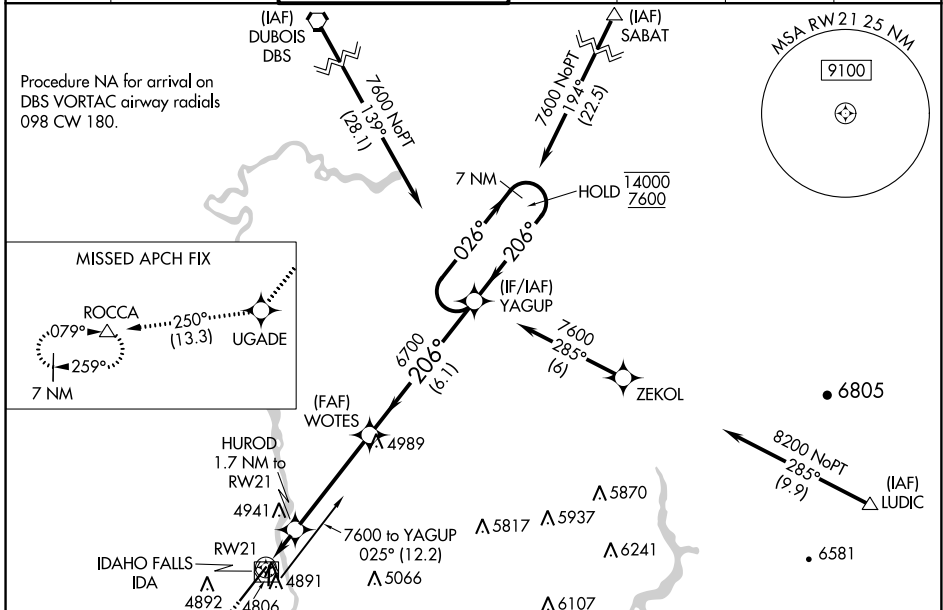
WAAS CH <b>40111</b> <b>W21A</b>	APP CRS <b>206°</b>	Rwy Idg <b>9002</b> TDZE <b>4735</b> Apt Elev <b>4744</b>
--	------------------------	---

# RNAV (GPS) Y RWY 21

IDAHO FALLS RGNL (IDA)

RNP APCH.	MALSR	MISSED APPROACH: Climb to 7500 direct UGADE and on track 250° to ROCCA and hold.
<p>▼ For uncompensated Baro-VNAV systems, LNAV/VNAV NA below -27°C or above 49°C. For inop ALS increase LNAV/VNAV visibility all Cats to RVR 4500, LNAV visibility Cts C/D to RVR 5500. #RVR 1800 authorized with the use of FD or AP or HUD to DA.</p>		

ATIS <b>135.325</b>	SALT LAKE CENTER <b>128.35 239.25</b>	IDAHO FALLS TOWER * <b>118.5 (CTAF) 0 257.8</b>	GND CON <b>121.7</b>	CLNC DEL <b>121.7</b>	GCO <b>121.725</b>	UNICOM <b>122.95</b>
------------------------	--	--	-------------------------	--------------------------	-----------------------	-------------------------



NW-1, 10 OCT 2019 to 07 NOV 2019

NW-1, 10 OCT 2019 to 07 NOV 2019

ELEV 4744	TDZE 4735																
<table border="1"> <tr> <td>7500 UGADE</td> <td>ROCCA</td> </tr> <tr> <td>↑</td> <td>tr 250°</td> </tr> </table>	7500 UGADE	ROCCA	↑	tr 250°	<table border="1"> <tr> <td>WOTES</td> <td>YAGUP</td> <td>7 NM Holding Pattern</td> </tr> <tr> <td>6700</td> <td>14000</td> <td>7600</td> </tr> <tr> <td>206°</td> <td>026°</td> <td>206°</td> </tr> <tr> <td>GP 3.00°</td> <td>TCH 49</td> <td></td> </tr> </table>	WOTES	YAGUP	7 NM Holding Pattern	6700	14000	7600	206°	026°	206°	GP 3.00°	TCH 49	
7500 UGADE	ROCCA																
↑	tr 250°																
WOTES	YAGUP	7 NM Holding Pattern															
6700	14000	7600															
206°	026°	206°															
GP 3.00°	TCH 49																
*LNAV only	HUROD 1.7 NM to RW21	6700	6700														
*0.9 NM to RW21	5320*	6700	6700														
0.9 NM	0.8 NM	4.3 NM	6.1 NM														
CATEGORY	A	B	C	D													
LPV DA#		4935/24	200 (200-½)														
LNAV/VNAV DA		5016/24	281 (300-½)														
LNAV MDA	5060/24	325 (400-½)	5060/40	325 (400-¾)													
CIRCLING	5200-1 456 (500-1)	5300-1 556 (600-1)	5400-1¾ 656 (700-1¾)	5420-2¼ 676 (700-2¼)													

