


LOC I-RDG <b>109.5</b>	APP CRS <b>004°</b>	Rwy Idg <b>5151</b> TDZE <b>343</b> Apt Elev <b>344</b>
---------------------------	------------------------	---

# ILS or LOC RWY 36

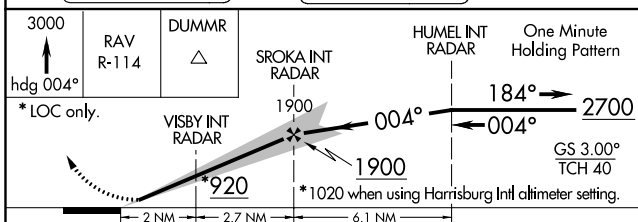
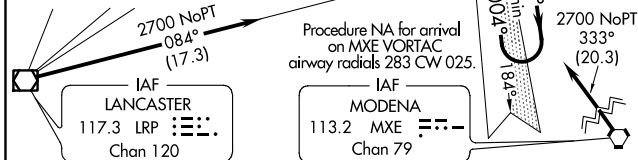
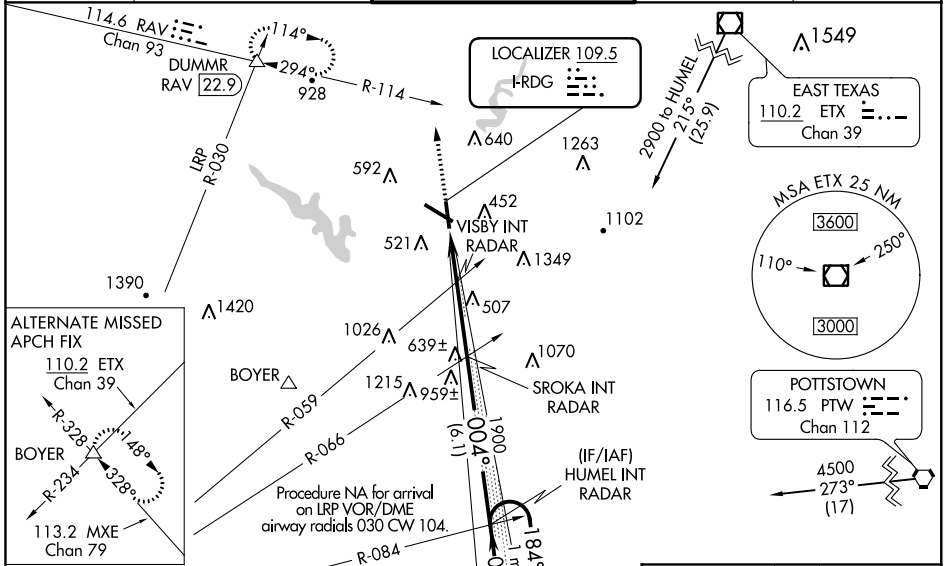
READING RGNL/CARL A SPAATZ FIELD (RDG)

**⚠** Night Landing: Rwy 18, 31 NA. Inoperative table does not apply. When local altimeter setting not received, use Harrisburg Intl altimeter setting and increase S-ILS 36 DA to 686 feet and all Cats visibility 1/4 mile, and increase all MDA 100 feet, and S-LOC 36 Cats C and D visibility 1/4 mile, and Circling Cat B and C visibility 1/4 mile and Cat D visibility 1/2 mile.

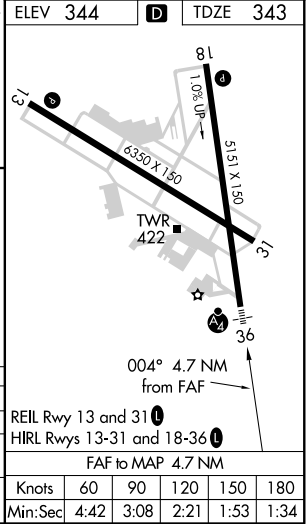
**MALSF** 

**MISSED APPROACH:** Climb to 3000 on heading 004° and RAV VORTAC R-114 to DUMMR INT/RAV 22.9 DME and hold, continue climb-in-hold to 3000.

ATIS <b>127.1</b>	READING APP CON* <b>125.15 257.9</b>	READING TOWER* <b>119.9 (CTAF) 288.3</b>	GND CON <b>121.9</b>	UNICOM <b>122.95</b>
----------------------	---	---	-------------------------	-------------------------



CATEGORY	A	B	C	D
S-ILS 36	593-1	250 (300-1)		
S-LOC 36	820-1 477 (500-1)	820-1 1/4 477 (500-1 1/4)	820-1 1/2 477 (500-1 1/2)	
CIRCLING	1020-1 676 (700-1)	1020-2 676 (700-2)	1140-2 1/2 796 (800-2 1/2)	



NE-4, 10 OCT 2019 to 07 NOV 2019

NE-4, 10 OCT 2019 to 07 NOV 2019