

WAAS CH 45712 W13A	APP CRS 133°	Rwy Idg 6350 TDZE 344 Apr Elev 344
--	------------------------	---

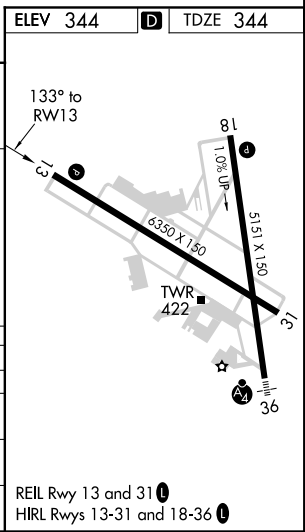
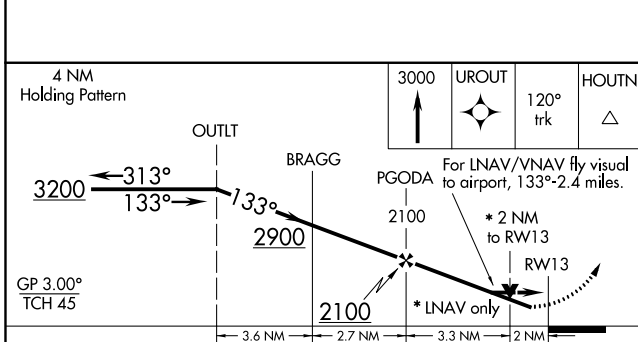
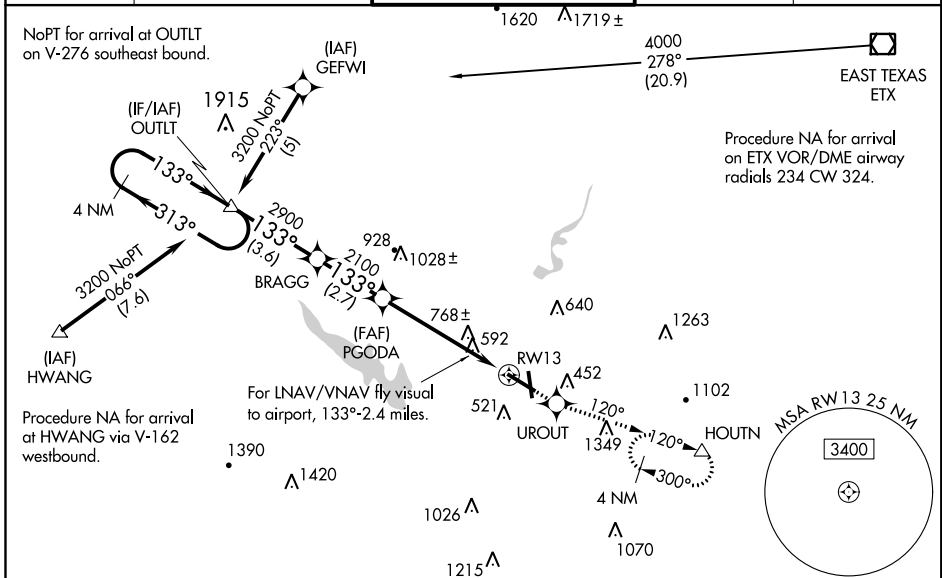
RNAV (GPS) RWY 13

READING RGNL/CARL A SPAATZ FIELD (RDG)

▼ Night landing: Rwy 18, 31 NA. For uncompensated Baro-VNAV systems, LNAV/VNAV NA below -15°C (5°F) or above 48°C (115°F). DME/DME RNP-0.3 NA. Helicopter visibility reduction below 3/4 SM NA. VDP NA when using Harrisburg Intl altimeter setting. LNAV/VNAV NA when using Harrisburg altimeter setting. When local altimeter setting not received, use Harrisburg Intl altimeter setting and increase all DA 93 feet and visibility 1/2 mile all Cats and increase all MDA 100 feet, and increase LNAV Cat B/C/D and Circling Cat B/C visibility 1/2 mile, and Circling Cat D visibility 1/2 mile.

MISSED APPROACH: Climb to 3000 direct UROUT and via 120° track to HOUTN and hold, continue climb-in-hold to 3000.

ATIS 127.1	READING APP CON * 125.15 257.9	READING TOWER * 119.9 (CTAF) 288.3	GND CON 121.9	UNICOM 122.95
----------------------	--	--	-------------------------	-------------------------



CATEGORY	A	B	C	D
LPV DA	926-2 582 (600-2)			
LNAV/VNAV DA	1170-2	826 (900-2)	1170-2 1/2 826 (900-2 1/2)	1170-2 3/4 826 (900-2 3/4)
LNAV MDA	1040-1	696 (700-1)	1040-2 696 (700-2)	1040-2 1/4 696 (700-2 1/4)
CIRCLING	1040-1	696 (700-1)	1040-2 696 (700-2)	1140-2 1/2 796 (800-2 1/2)

RNAV (GPS) RWY 13

NE-4, 10 OCT 2019 to 07 NOV 2019

NE-4, 10 OCT 2019 to 07 NOV 2019