

RNAV (GPS) RWY 18

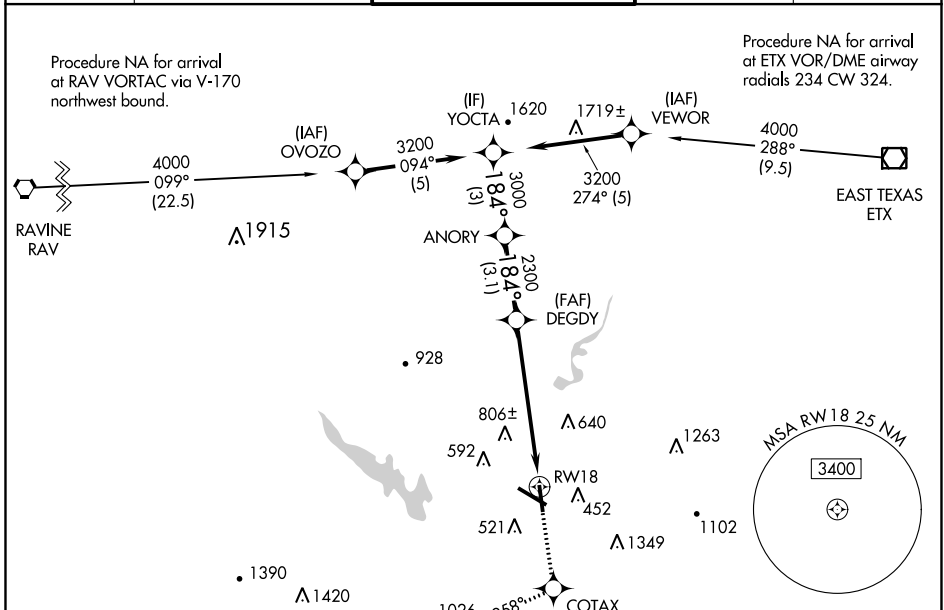
READING RGNL/CARL A SPAATZ FIELD (RDG)

APP CRS 184°	Rwy Idg 5151
	TDZE 319
	Apt Elev 344

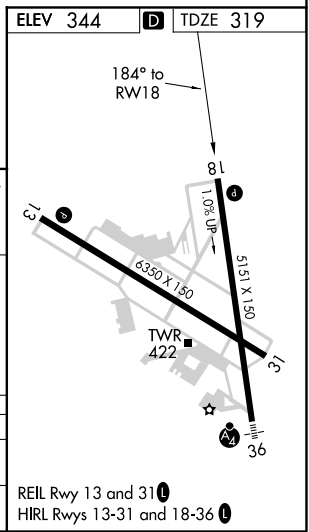
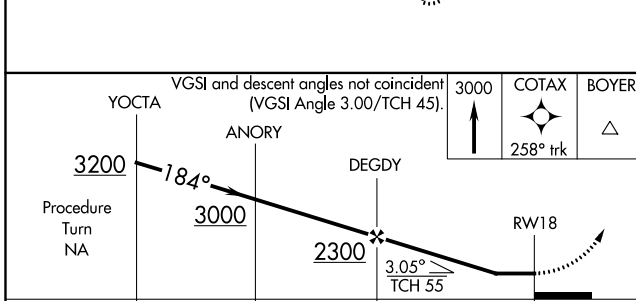
⚠ Night landing: Rwy 18, 31 NA. DME/DME RNP-0.3 NA. Helicopter visibility reduction below 1 SM NA. When local altimeter setting not received, use Harrisburg Intl altimeter setting and increase all MDA 100 feet, and increase LNAV Cat B visibility ¼ mile and Cats C and D visibility ½ mile, and increase Circling Cats B and C visibility ¼ mile and Cat D visibility ½ mile.

MISSED APPROACH: Climb to 3000 direct COTAX and via 258° track to BOYER and hold, continue climb-in-hold to 3000.

ATIS 127.1	READING APP CON ★ 125.15 257.9	READING TOWER ★ 119.9 (CTAF) 288.3	GND CON 121.9	UNICOM 122.95
----------------------	--	---	-------------------------	-------------------------



ELEV 344	D TDZE 319
----------	-------------------



CATEGORY	A	B	C	D
LNAV MDA	980-1 661 (700-1)		980-1¼ 661 (700-1¼)	980-2 661 (700-2)
CIRCLING	1020-1 676 (800-1)		1020-2 676 (800-2)	1140-2½ 796 (900-2½)

NE-4, 10 OCT 2019 to 07 NOV 2019

NE-4, 10 OCT 2019 to 07 NOV 2019