

HI-TACAN RWY 4

VORTAC HRV 114.1 Chan 88	APCH CRS 046°	Rwy ldg TDZE Arprt Elev 10,001 -2 2
--	-------------------------	---

JAL-630 [USN]

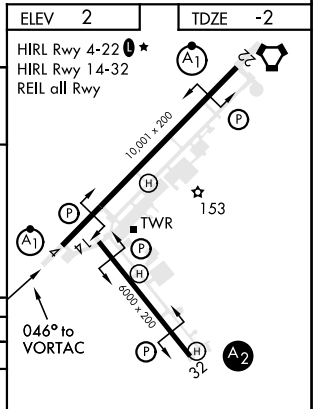
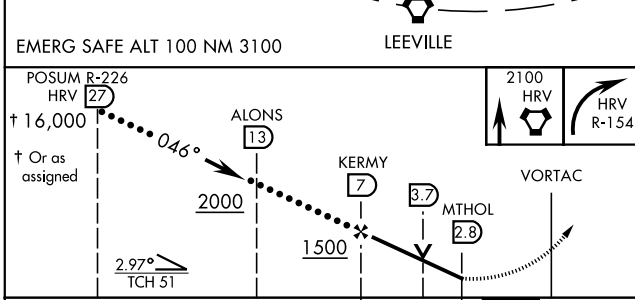
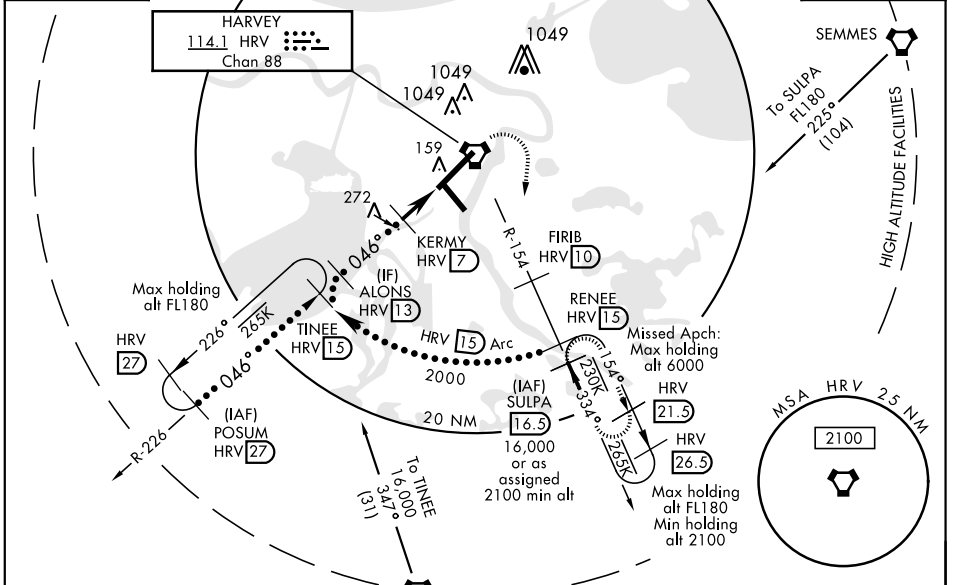
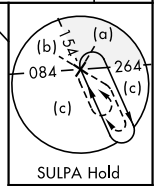
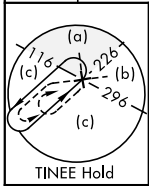
NEW ORLEANS NAS JRB (ALVIN CALLENDER FLD) (KNBG)

▼ * When ALS inop, increase vis CAT CDE to 1½ miles.
** CAT E circling not authorized NW of Rwy 4-22.



MISSED APPROACH: Climb direct HRV VORTAC, then climbing right turn to 2100, intercept HRV R-154 to SULPA and hold. Cross FIRIB (HRV R-154/10) at 2000.

ATIS ★ 279.55	NEW ORLEANS APP CON 123.85 256.9	NAVY NEW ORLEANS TOWER ★ 0 123.8 340.2 (CTAF)	GND CON 121.6 270.35	CLNC DEL 128.35 263.0	ASR/ PAR
-------------------------	--	---	--------------------------------	---------------------------------	-------------



CATEGORY	C	D	E
S-4*	480-1	482 (500-1)	
CIRCLING**	580-1½ 578 (600-1½)	640-2 638 (700-2)	640-2¼ 638 (700-2¼)

HI-TACAN RWY 4

SC-4, 10 OCT 2019 to 07 NOV 2019

SC-4, 10 OCT 2019 to 07 NOV 2019