

NEW ORLEANS, LOUISIANA

ILS or LOC/DME RWY 4

NEW ORLEANS NAS JRB
(ALVIN CALLENDER FLD) (KNBG)

LOC I-NBG 109.5	APCH CRS 044°	Rwy Idg TDZE Arprt Elev 10,001 -2 2
---------------------------	-------------------------	---

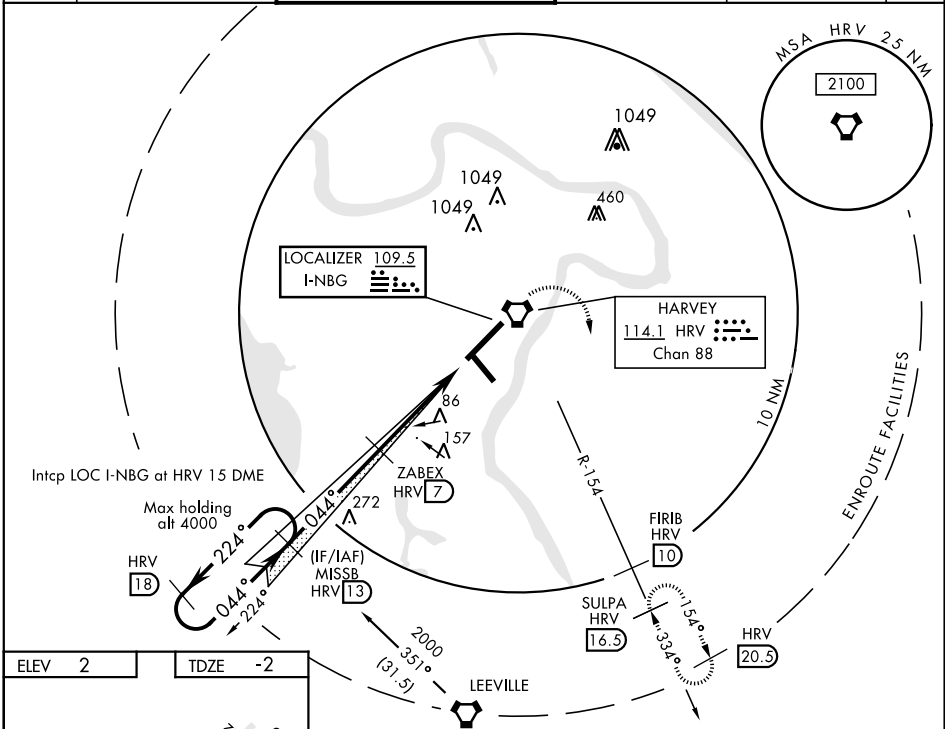
AL-630 [UNSN]

▼ * When ALS inop, increase vis CAT ABCDE to ½ mile.
 ** When ALS inop, increase vis CAT AB to 1 mile;
 CAT CDE to 1½ miles.
 *** CAT E circling not authorized NW of Rwy 4-22.

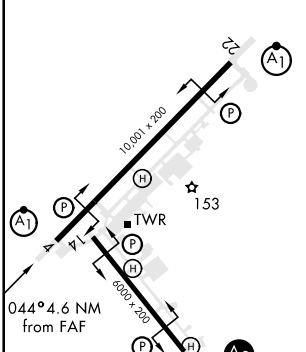


MISSED APPROACH: Climb to 2100 direct HRV
 VORTAC then climbing right turn intercept HRV R-154
 to SULPA and hold. Cross FIRIB at 2000.

ATIS ★ 279.55	NEW ORLEANS APP CON 123.85 256.9	NAVY NEW ORLEANS TOWER ★ 123.8 340.2 (CTAF)	GND CON 121.6 270.35	CLNC DEL 128.35 263.0	ASR/ PAR
-------------------------	--	---	--------------------------------	---------------------------------	-------------

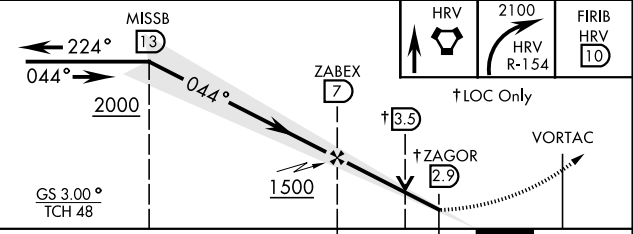


ELEV 2	TDZE -2
--------	---------



HIRL Rwy 04-22 HIRL Rwy 14-32 REIL all Rwy					
FAF to MAP 4.1 NM					
Knots	60	90	120	150	180
Min:Sec	4:06	2:44	2:03	1:38	1:22

EMERG SAFE ALT 100 NM 3100



CATEGORY	A	B	C	D	E
S-ILS 4 *	198-½		200	(200-½)	
S-LOC 4 **	400-½ 402 (400-½)		400-¾ 402 (400-¾)		
*** CIRCLING	580-1 578 (600-1)		580-1½ 578 (600-1½)	640-2 638 (700-2)	640-2½ 638 (700-2½)

NEW ORLEANS, LOUISIANA

29°50'N-90°02'W

NEW ORLEANS NAS JRB
(ALVIN CALLENDER FLD)

ILS or LOC/DME RWY 4

SC-4, 10 OCT 2019 to 07 NOV 2019

SC-4, 10 OCT 2019 to 07 NOV 2019