

NEW ORLEANS, LOUISIANA

RNAV (GPS) RWY 14

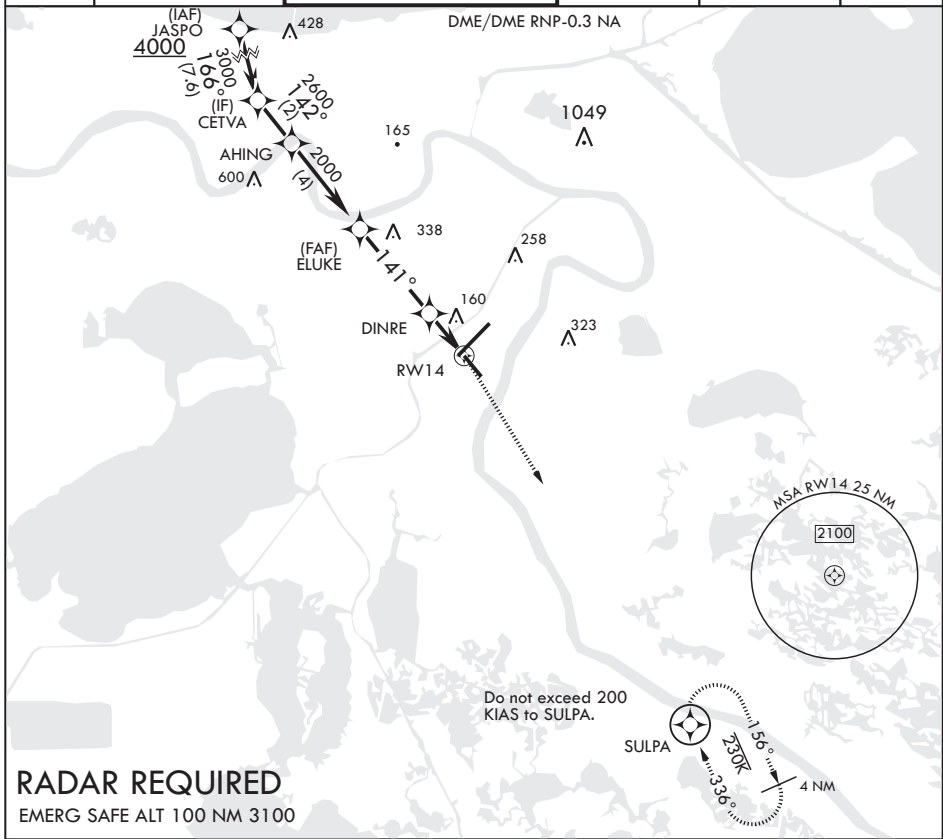
AL-630 (USN)

NEW ORLEANS NAS JRB (ALVIN CALLENDER FLD) (KNBG)

APCH CRS	Rwy Idg	6000
141°	TDZE	2
	Arprt Elev	2

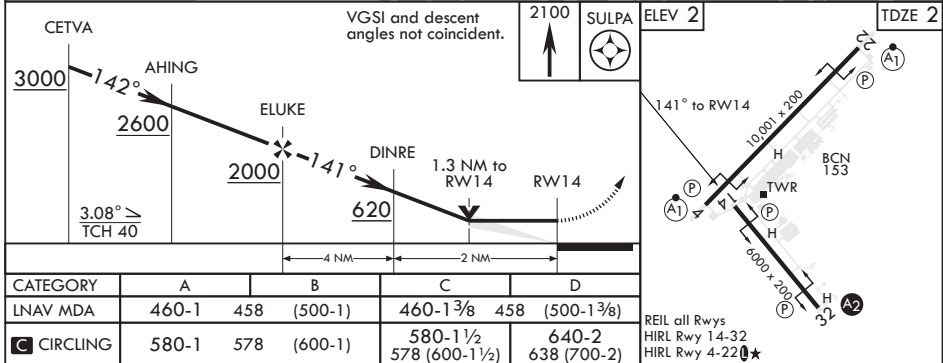
MISSED APPROACH: Climb to 2100 direct SULPA and hold.

ATIS*	APP CON/DEP CON	NAVY NEW ORLEANS TOWER*	GND CON	CLNC DEL	ASR/PAR
279.55	123.85 256.9	123.8 0* 340.2 (CTAF)	121.6 270.35	128.35 263.0	



RADAR REQUIRED

EMERG SAFE ALT 100 NM 3100



NEW ORLEANS, LOUISIANA

29°50'N - 90°02'W NEW ORLEANS NAS JRB (ALVIN CALLENDER FLD) (KNBG)

Amdt 1 13SEP18

RNAV (GPS) RWY 14

SC-4, 10 OCT 2019 to 07 NOV 2019

SC-4, 10 OCT 2019 to 07 NOV 2019