

NEW ORLEANS, LOUISIANA

RNAV (GPS) RWY 22

WAAS CH 60141 W22A	APCH CRS 224°	Rwy ldg TDZE Arprt Elev	10,001 -1 2
---------------------------------	-------------------------	-------------------------------	--

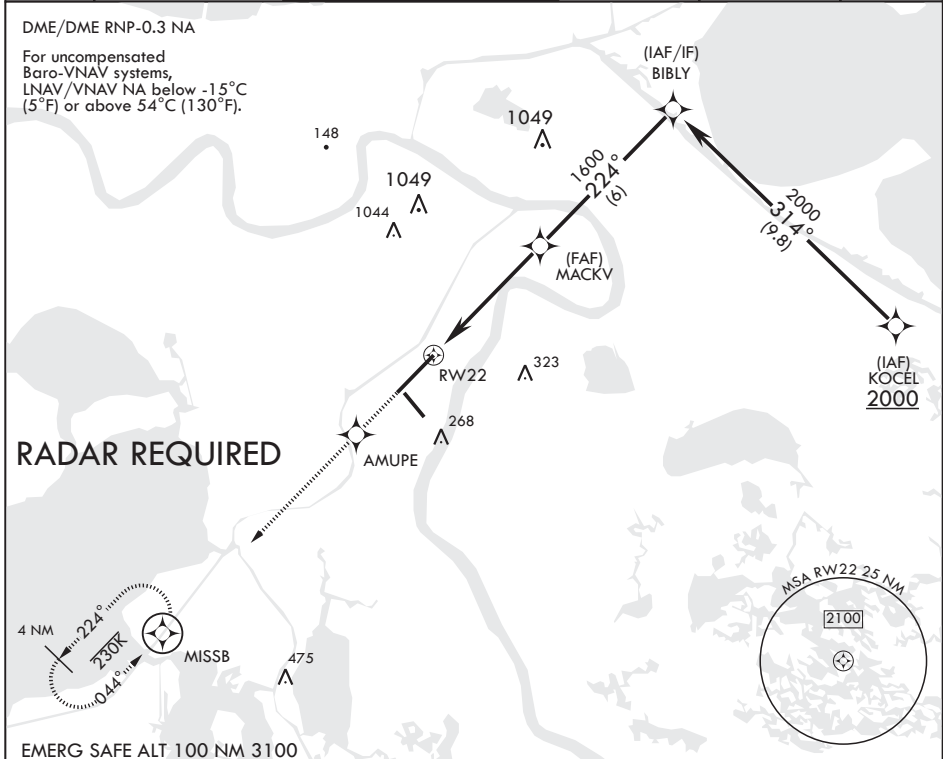
AL-630 (USN)

NEW ORLEANS NAS JRB (ALVIN CALLENDER FLD) (KNBG)

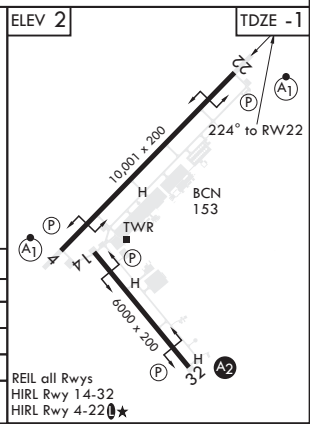
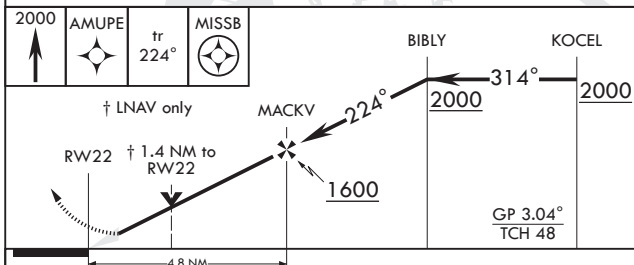
V * When ALS inop, increase vis CAT ABCD to 3/4 mile.
 ** When ALS inop, increase vis CAT ABCD to 1 3/4 miles.
 *** When ALS inop, increase vis CAT AB to 1 mile, CAT CD to 1 3/8 miles.

ALSF-1  MISSED APPROACH: Climb to 2000 direct AMUPE track 224° to MISSB and hold.

ATIS* 279.55	APP CON/DEP CON 123.85 256.9	NAVY NEW ORLEANS TOWER* 123.8 0* 340.2 (CTAF)	GND CON 121.6 270.35	CLNC DEL 128.35 263.0	ASR/PAR
------------------------	--	---	--------------------------------	---------------------------------	---------



EMERG SAFE ALT 100 NM 3100



CATEGORY	A	B	C	D
LPV DA*	199-1/2	200	(200-1/2)	
LNAV/VNAV DA**	520-1 1/4	521	(600-1 1/4)	
LNAV MDA***	480-1/2 481 (500-1/2)	480-1 481 (500-1)		
CI RCLING	580-1 578 (600-1)	580-1 1/2 578 (600-1 1/2)	640-2 638 (700-2)	

REIL all Rwy's
 HIRL Rwy 14-32
 HIRL Rwy 4-22 **0***

NEW ORLEANS, LOUISIANA

29°50'N - 90°02'W NEW ORLEANS NAS JRB (ALVIN CALLENDER FLD) (KNBG)

Amdt 2 13SEP18

RNAV (GPS) RWY 22

SC-4, 10 OCT 2019 to 07 NOV 2019

SC-4, 10 OCT 2019 to 07 NOV 2019