

NEW ORLEANS, LOUISIANA

# RNAV (GPS) RWY 4

APCH CRS <b>044°</b>	Rwy Idg TDZE Arprt Elev	<b>10,001</b> <b>-2</b> <b>2</b>
-------------------------	-------------------------------	--

AL-630 (USN)

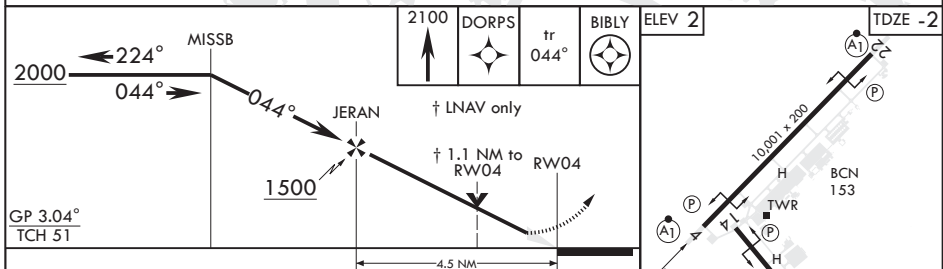
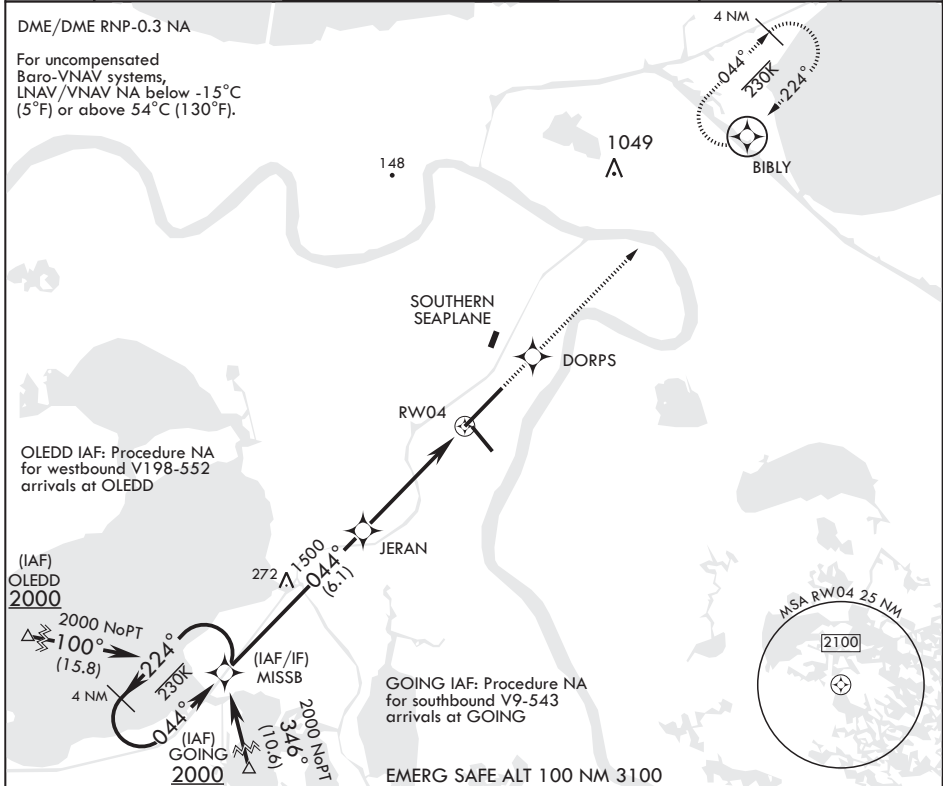
NEW ORLEANS NAS JRB (ALVIN CALLENDER FLD) (KNBG)

**V** \* When ALS inop, increase vis CAT ABCD to 1 5/8 mile.  
 \*\* When ALS inop, increase CAT AB vis to 1 mile, CAT CD vis to 1 1/8 miles.



MISSED APPROACH: Climb to 2100 direct DORPS track 044° to BIBLY and hold.

ATIS* <b>279.55</b>	APP CON/DEP CON <b>123.85 256.9</b>	NAVY NEW ORLEANS TOWER* <b>123.8</b> <b>0</b> <b>340.2</b> (CTAF)	GND CON <b>121.6 270.35</b>	CLNC DEL <b>128.35 263.0</b>	ASR/PAR
------------------------	--	--	--------------------------------	---------------------------------	---------



CIRCLING	580-1	578 (600-1)	580-3/4	402 (400-3/4)	640-2	638 (700-2)
CATEGORY	A		B		D	
LNAV/VNAV DA*	480-1 1/8		482		(500-1 1/8)	
LNAV MDA**	400-1/2	402 (400-1/2)	400-3/4	402 (400-3/4)		

NEW ORLEANS, LOUISIANA 29°50'N - 90°02'W NEW ORLEANS NAS JRB (ALVIN CALLENDER FLD) (KNBG)

Amdt 4 13SEP18

# RNAV (GPS) RWY 4

SC-4, 10 OCT 2019 to 07 NOV 2019

SC-4, 10 OCT 2019 to 07 NOV 2019