

NEW ORLEANS, LOUISIANA

VOR/DME or TACAN RWY 22

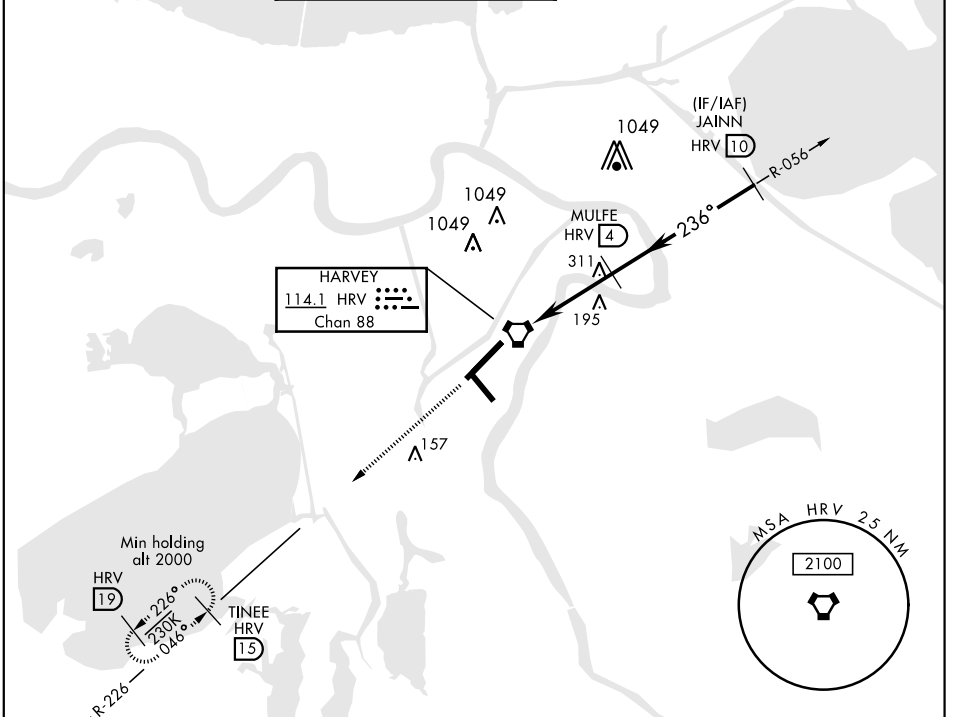
NEW ORLEANS NAS JRB  
(ALVIN CALLENDER FLD) (KNBG)

VORTAC HRV <b>114.1</b> Chan <b>88</b>	APCH CRS <b>236°</b>	Rwy ldg TDZE Arprt Elev <b>10,001</b> <b>-1</b> <b>2</b>
--	-------------------------	---

AL-630 [USN]

<p>▼ * When ALS inop, increase vis CAT AB to 1 mile, CAT CD to 1½ miles.</p>	<p>ALSF-1 A1</p>	<p>MISSED APPROACH: Climb to 2000 via R-226 to TINEE and hold.</p>
--	----------------------	--

ATIS ★ <b>279.55</b>	NEW ORLEANS APP CON <b>123.85 256.9</b>	NAVY NEW ORLEANS TOWER ★ <b>0 123.8 340.2 (CTAF)</b>	GND CON <b>121.6 270.35</b>	CLNC DEL <b>128.35 263.0</b>	ASR/PAR
-------------------------	--	---	--------------------------------	---------------------------------	---------

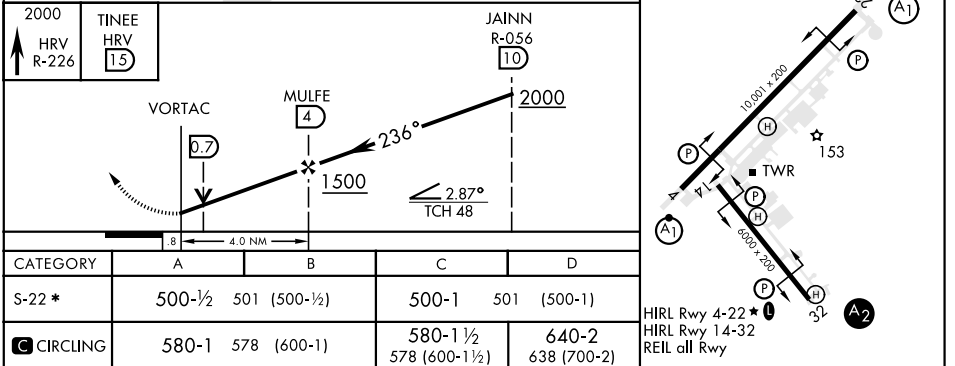


SC-4, 10 OCT 2019 to 07 NOV 2019

SC-4, 10 OCT 2019 to 07 NOV 2019

**RADAR REQUIRED**

EMERG SAFE ALT 100 NM 3100



NEW ORLEANS, LOUISIANA

29° 50' N-90° 02' W

NEW ORLEANS NAS JRB (KNBG)  
(ALVIN CALLENDER FLD)

VOR/DME or TACAN RWY 22

Amr 2 13SEP18