

NEW ORLEANS, LOUISIANA

VOR/DME or TACAN RWY 4

VORTAC HRV 114.1 Chan 88	APCH CRS 046°	Rwy ldg TDZE Arprt Elev 10,001 -2 2
--	-------------------------	---

AL-630 [USN]

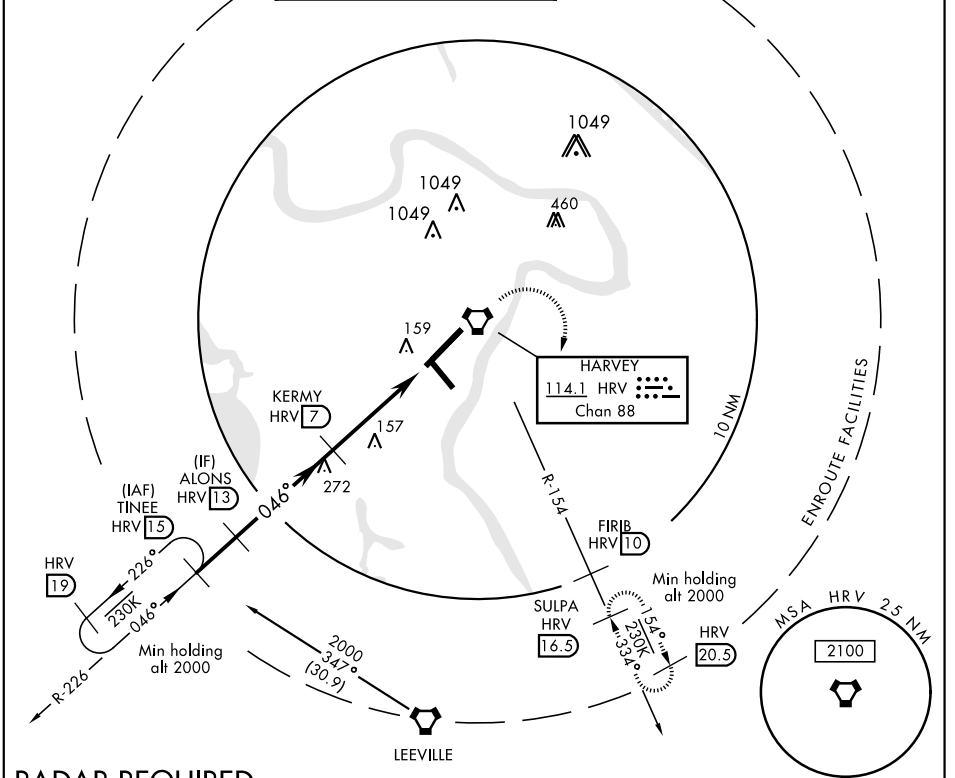
NEW ORLEANS NAS JRB
[ALVIN CALLENDER FLD] (KNBG)

▼ * When ALS inop, increase vis CAT AB to 1 mile, CAT CD to 1 1/8 miles.

ALSF-1

MISSED APPROACH: Climb direct HRV VORTAC, then climbing right turn to 2100, intercept HRV R-154 to SULPA and hold. Cross FIRB (HRV R-154/10) at 2000.

ATIS ★ 279.55	NEW ORLEANS APP CON 123.85 256.9	NAVY NEW ORLEANS TOWER ★ 0 123.8 340.2 (CTAF)	GND CON 121.6 270.35	CLNC DEL 128.35 263.0	ASR/PAR
-------------------------	--	---	--------------------------------	---------------------------------	---------

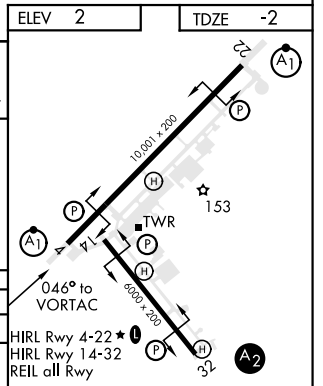
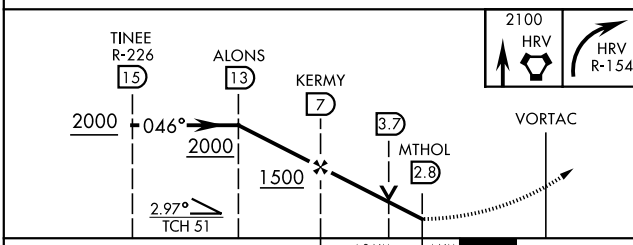


SC-4, 10 OCT 2019 to 07 NOV 2019

SC-4, 10 OCT 2019 to 07 NOV 2019

RADAR REQUIRED

EMERG SAFE ALT 100 NM 3100



CATEGORY	A	B	C	D
S-4 *	480-1/2	482 (500-1/2)	480-1	482 (500-1)
CIRCLING	580-1	578 (600-1)	580-1 1/2 578 (600-1 1/2)	640-2 638 (700-2)

NEW ORLEANS, LOUISIANA

29° 50' N-90° 02' W

NEW ORLEANS NAS JRB (KNBG)
[ALVIN CALLENDER FLD]

VOR/DME or TACAN RWY 4

Amr 2 13SEP18