

APP CRS	Rwy Idg	<b>7000</b>
<b>120°</b>	TDZE	<b>1225</b>
	Apt Elev	<b>1249</b>

# RNAV (RNP) RWY 12

PANGBORN MEMORIAL (EAT)

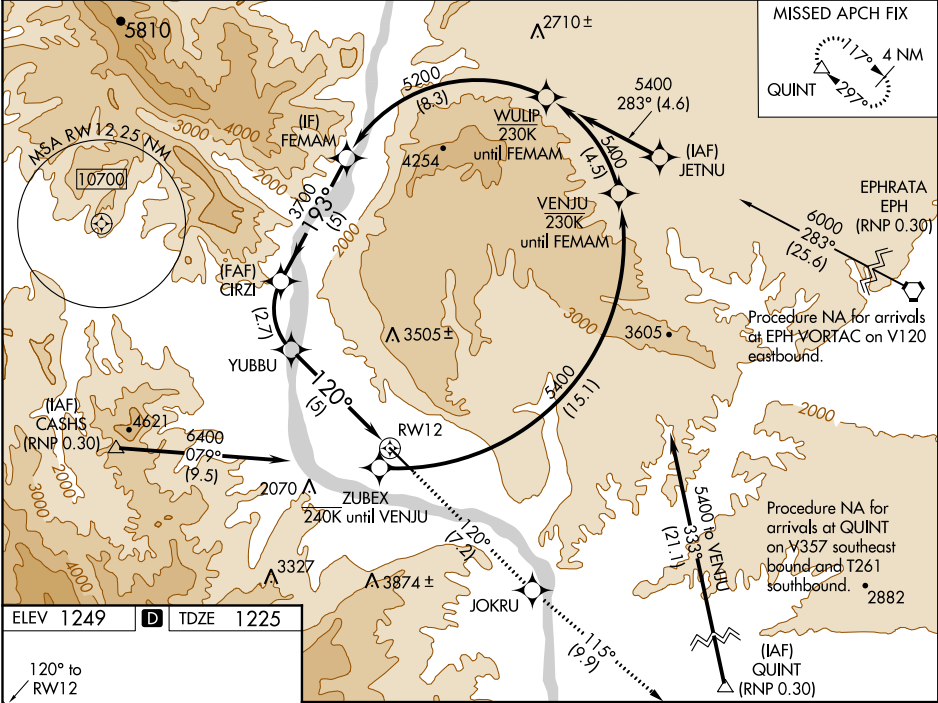
**▼** For uncompensated Baro-VNAV systems, procedure NA below -10°C (14°F) or above 54°C (130°F). RF required. GPS required. FD or HUD required.

**▲** MISSED APPROACH: Climb to 5400 on track 120° to JOKRU and on track 115° to QUINT and hold.

**✖** -7°C

\*Missed approach requires a minimum climb of 319 feet per NM to 3700.  
 #Missed approach requires a minimum climb of 295 feet per NM to 3700.

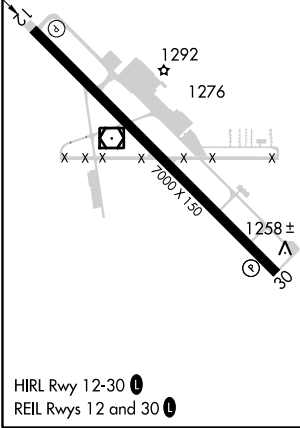
ASOS <b>119.925</b>	SEATTLE CENTER <b>126.1 291.6</b>	UNICOM <b>123.0 (CTAF) 0</b>
------------------------	--------------------------------------	---------------------------------



NW-1, 10 OCT 2019 to 07 NOV 2019

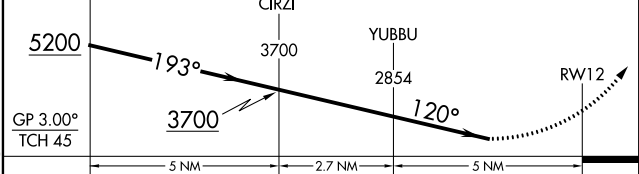
NW-1, 10 OCT 2019 to 07 NOV 2019

ELEV 1249	<b>D</b>	TDZE 1225
-----------	----------	-----------



VGSI and RNAV glidepath not coincident (VGSI Angle 3.60/TCH 60).

5400	JOKRU	QUINT
↑ tr 120°	✦	tr 115°
		△



CATEGORY	A	B	C	D
RNP 0.15 DA*		1995-3	770 (800-3)	
RNP 0.19 DA#		2072-3	847 (900-3)	
RNP 0.30 DA		2417-5	1192 (1200-5)	

## AUTHORIZATION REQUIRED