

6102 AON Z 01 610 OCT 2019 10 17-MN

SEATTLE CENTER
126.1 291.6
UNICOM
123.0
ASOS
119.925

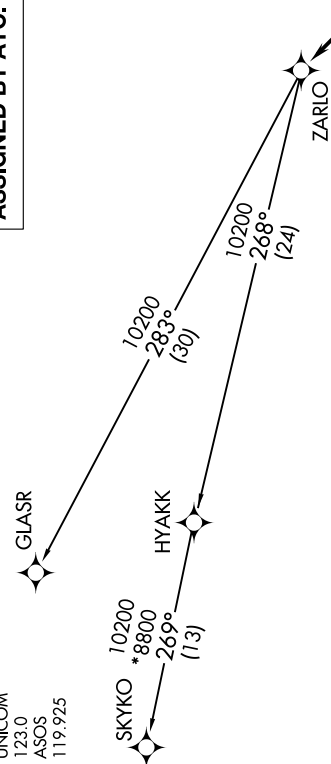
**TOP ALTITUDE:
ASSIGNED BY ATC.**

DEPARTURE ROUTE DESCRIPTION

TAKEOFF RUNWAY 12: Climb heading 120° to 3700, then left turn direct PREBE, thence . . .
TAKEOFF RUNWAY 30: Climb heading 300° to 1750, then direct PREBE, thence . . .

. . . on track 300° to cross UBIYO at or above 6700, then on depicted route to ZARLO, then on transition. Expect filed altitude 10 minutes after departure.

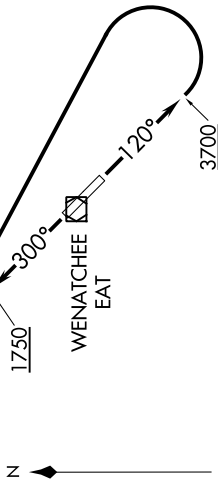
GLASR TRANSITION (ZARLO2.GLASR)
SKYKO TRANSITION (ZARLO2.SKYKO)



TAKEOFF MINIMUMS

Rwy 12: Standard with minimum climb of 650' per NM to 3300.
Rwy 30: Standard with minimum climb of 465' per NM to 6200.

NOTE: RNAV 1.
NOTE: GPS required.
NOTE: Departures may be restricted to cross UBIYO at or below 11 000.



NOTE: Chart not to scale.

NW-1, 10 OCT 2019 to 07 NOV 2019