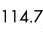
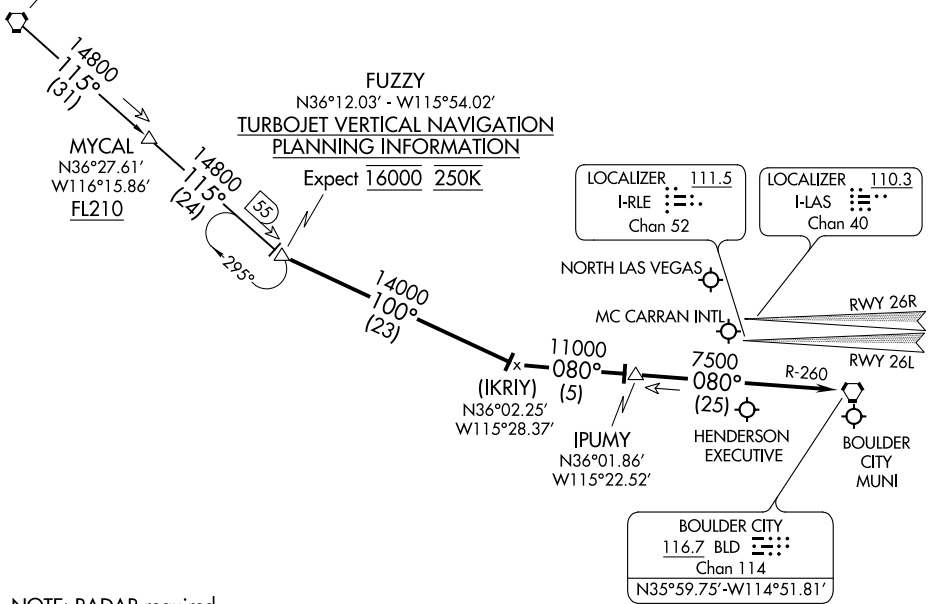


LAS VEGAS APP CON
 125.025 379.15
 LAS VEGAS TOWER
 118.75 257.8 (Rwy 1L/19R, 1R/19L)
 119.9 257.8 (Rwy 8L/26R, 8R/26L)
 NORTH LAS VEGAS TOWER*
 125.7 360.75
 LAS VEGAS D-ATIS
 132.4
 NORTH LAS VEGAS ATIS
 118.05

BEATTY
 114.7 BTY 
 Chan 94
 N36°48.04'-W116°44.86'
 L-9, H-4

FUZZY
 N36°12.03' - W115°54.02'
**TURBOJET VERTICAL NAVIGATION
 PLANNING INFORMATION**

Expect 16000 250K



- NOTE: RADAR required.
- NOTE: DME required.
- NOTE: Chart not to scale.

ARRIVAL ROUTE DESCRIPTION

BEATTY TRANSITION (BTY.FUZZY8): From over BTY VORTAC on BTY R-115 to FUZZY. Thence . . .

. . . From over FUZZY via heading 100° to intercept BLD R-260 to BLD VORTAC.

LANDING LAS RUNWAYS 1L/R, 8L/R, and 19L/R: Expect RADAR vectors for visual approach prior to BLD VORTAC.

LANDING LAS RUNWAYS 26L/R: Expect ILS approach.

LANDING VGT, HND, BVU: Then after IPUMY, expect RADAR vectors to airport.

SW-4, 10 OCT 2019 to 07 NOV 2019

SW-4, 10 OCT 2019 to 07 NOV 2019