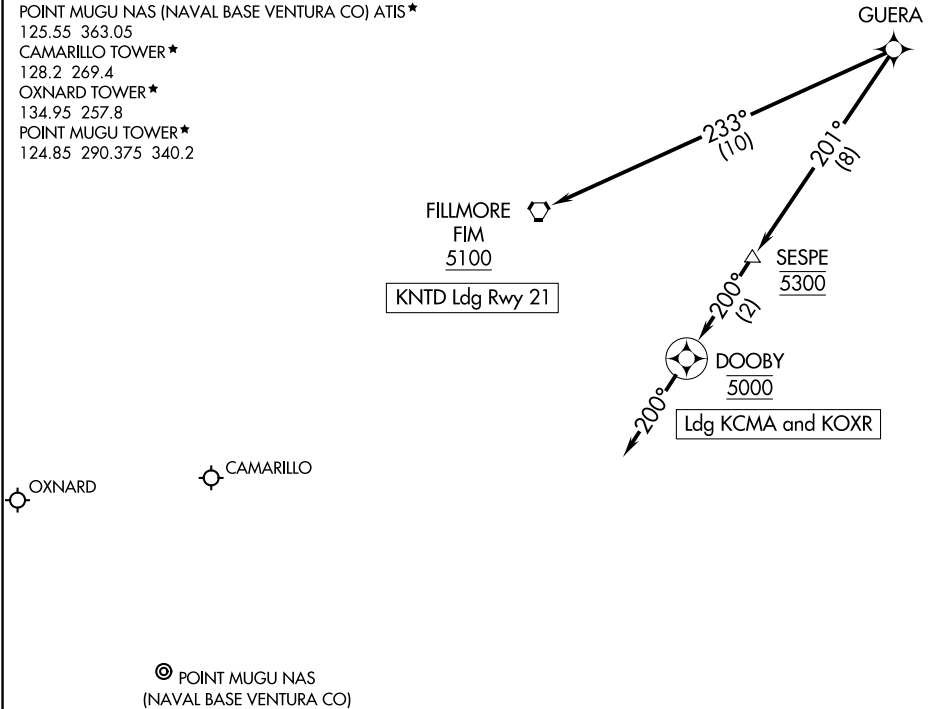


SOCAL APP CON  
 120.4 360.6  
 CAMARILLO ATIS  
 126.025  
 OXNARD ATIS  
 118.05  
 POINT MUGU NAS (NAVAL BASE VENTURA CO) ATIS\*  
 125.55 363.05  
 CAMARILLO TOWER\*  
 128.2 269.4  
 OXNARD TOWER\*  
 134.95 257.8  
 POINT MUGU TOWER\*  
 124.85 290.375 340.2



SW-3, 10 OCT 2019 to 07 NOV 2019

SW-3, 10 OCT 2019 to 07 NOV 2019

- NOTE: RADAR required.
- NOTE: RNAV 1.
- NOTE: DME/DME/IRU or GPS required.
- NOTE: Turbojet and turboprop aircraft only.

NOTE: Chart not to scale.

ARRIVAL ROUTE DESCRIPTION

LANDING KNTD RWY 21: From GUERA on track 233° to FIM VORTAC at or above 5100. Expect ILS Y or LOC/DME RWY 21 approach.

LANDING KOXR/KCMA: From GUERA on track 201° to cross SESPE at 5300, then on track 200° to cross DOOBY at 5000, then on track 200°. Expect RADAR vectors to final approach course.