

APP CRS	Rwy Idg	6013
252°	TDZE	77
	Apt Elev	77

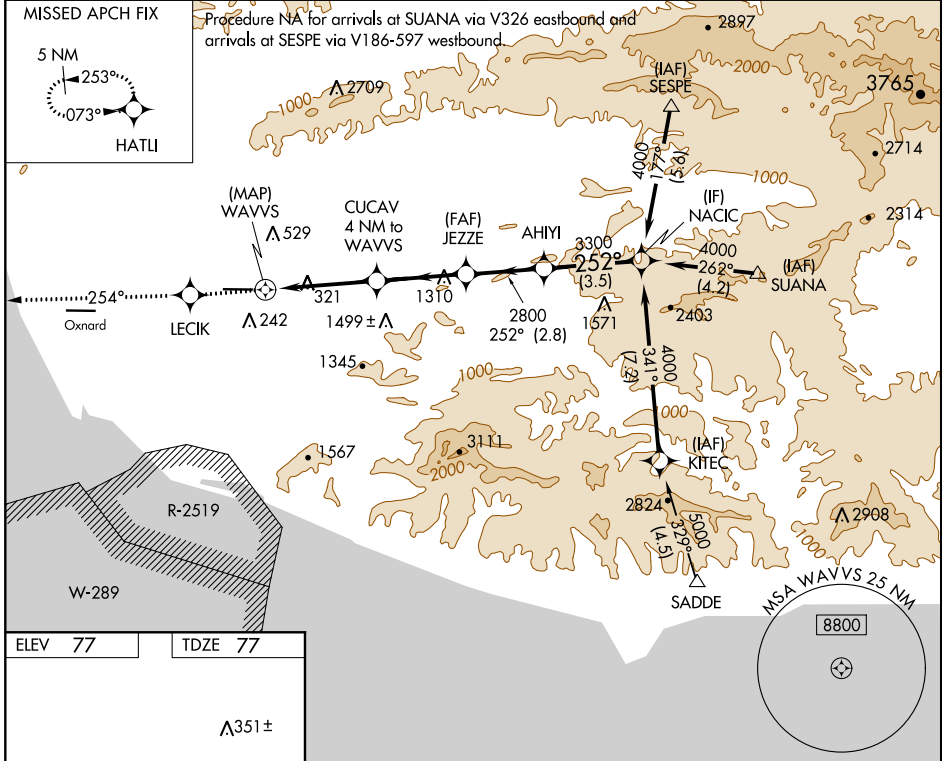
RNAV (GPS) Y RWY 26

CAMARILLO (CMA)

▽ Circling NA north of Rwy 8-26. DME/DME RNP-0.3 NA.
▲ If local altimeter setting not received, use Oxnard altimeter setting and increase all MDAs 20 feet. VDP NA when using Oxnard altimeter setting.

MISSED APPROACH: Climb to 3000 direct LECIK and via 254° track to HATLI and hold.

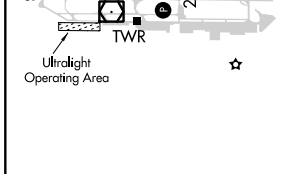
ATIS	POINT MUGU APP CON *	CAMARILLO TOWER *	GND CON	CLNC DEL	POINT MUGU CLNC DEL	UNICOM
126.025	124.7 335.5	128.2 (CTAF) 0 269.4	121.8	121.8	120.75 279.55	122.95



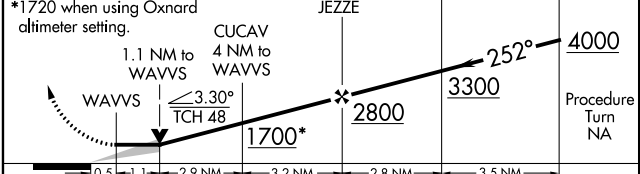
SW-3, 10 OCT 2019 to 07 NOV 2019

SW-3, 10 OCT 2019 to 07 NOV 2019

ELEV 77	TDZE 77
---------	---------



3000	LECIK	HATLI	VGSI and descent angles not coincident (VGSI Angle 3.00/TCH 48).
------	-------	-------	--



CATEGORY	A	B	C	D
LNAV MDA	620-1	543 (600-1)	620-1½ 543 (600-1½)	620-1¾ 543 (600-1¾)
CIRCLING	620-1	543 (600-1)	620-1½ 543 (600-1½)	640-2 563 (600-2)