

WAAS CH 86841 W30A	APP CRS 306°	Rwy Idg 3900 TDZE 657 Apt Elev 684
--	------------------------	---

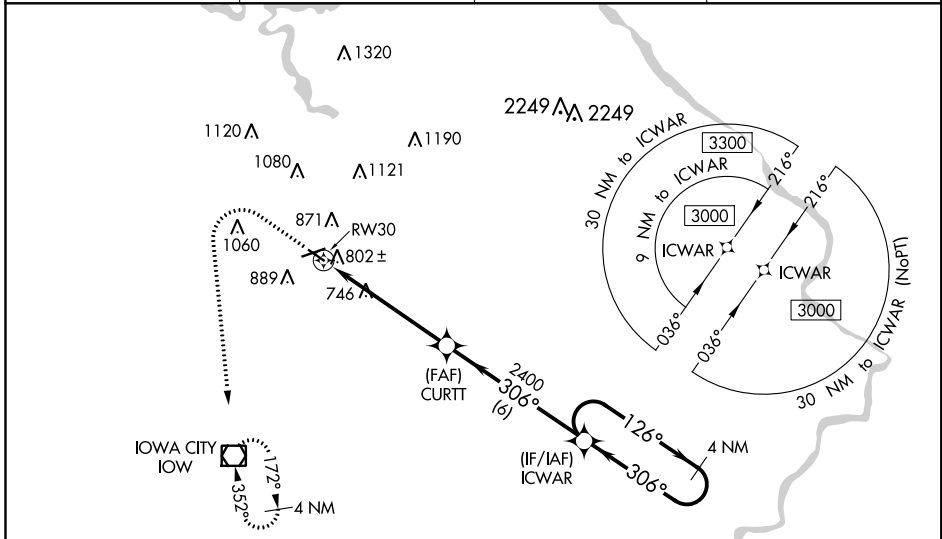
RNAV (GPS) RWY 30

IOWA CITY MUNI (IOW)

⚠ Rwy 7, 12, 30 helicopter visibility reduction below 1 SM NA. DME/DME RNP-0.3 NA.
⚠ When local altimeter setting not received, use Cedar Rapids altimeter setting and increase all MDA 80 feet, LP Cat C and D visibility 1/8 SM, LNAV and Circling Cat C and D visibility 1/4 SM. Straight-in Rwy 30 NA at night, Circling Rwy 7, 12 NA at night.

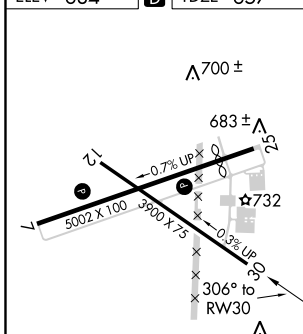
MISSED APPROACH: Climb to 1100 then climbing left turn to 3000 direct IOW VOR/DME and hold.

ASOS 128.075	CEDAR RAPIDS APP CON * 119.7 266.8	CLNC DEL 119.05	UNICOM 122.8 (CTAF) 0
------------------------	--	---------------------------	---------------------------------

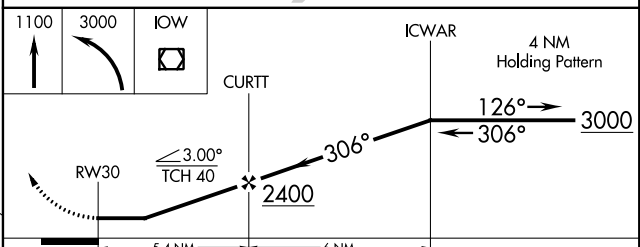


Procedure NA for arrivals at IOW VOR/DME on airway radials 057 CW 142.

ELEV 684	D	TDZE 657
-----------------	----------	-----------------



REIL Rwy 7 and 25
 MIRL Rwy 7-25 and 12-30 **0**



CATEGORY	A	B	C	D
LP MDA	1000-1 343 (400-1)			
LNAV MDA	1060-1	403 (400-1)	1060-1 1/8	403 (400-1 1/8)
C CIRCLING	1260-1	576 (600-1)	1440-2 1/4 756 (800-2 1/4)	1440-2 1/2 756 (800-2 1/2)

NC-3, 10 OCT 2019 to 07 NOV 2019

NC-3, 10 OCT 2019 to 07 NOV 2019