

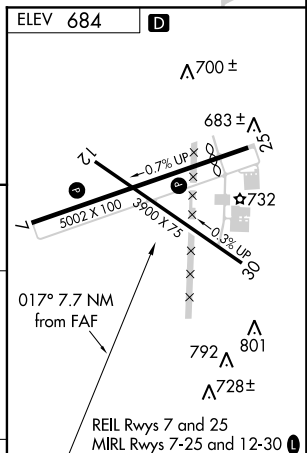
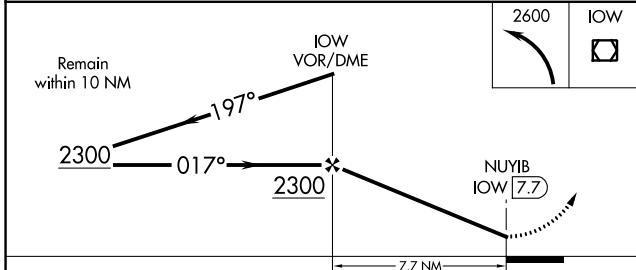
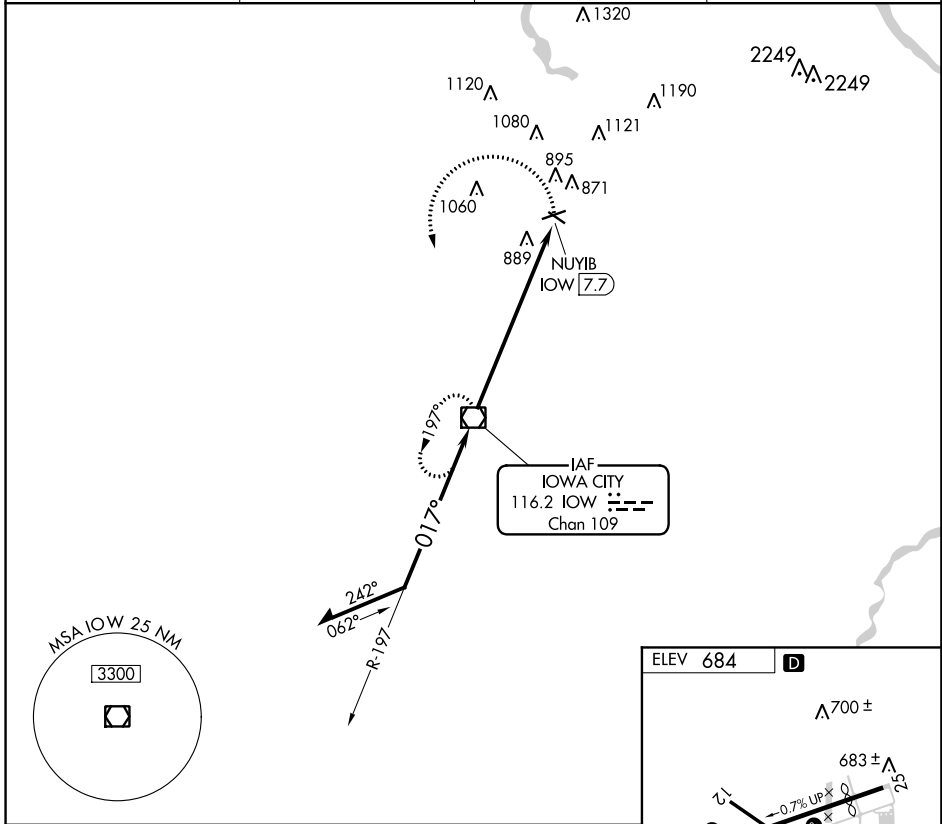
VOR/DME IOW 116.2 Chan 109	APP CRS 017°	Rwy Idg TDZE Apt Elev	N/A N/A 684
--	------------------------	-----------------------------	--

VOR-A
IOWA CITY MUNI (IOW)

⚠ If local altimeter setting not received, use Cedar Rapids altimeter setting and increase all MDAs 80 feet. Helicopter visibility reduction below 1 SM NA.
Night landing: Rwy 7, 12, 30 NA.

MISSED APPROACH: Climbing left turn to 2600 direct IOW VOR/DME and hold.

ASOS 128.075	CEDAR RAPIDS APP CON ★ 119.7 266.8	CLNC DEL 119.05	UNICOM 122.8 (CTAF) D
------------------------	--	---------------------------	--



CATEGORY	A	B	C	D	FAF to MAP 7.7 NM					
CIRCLING	1280-1 596 (600-1)		NA		Knots	60	90	120	150	180
					Min:Sec	7:42	5:08	3:51	3:05	2:34

NC-3, 10 OCT 2019 to 07 NOV 2019

NC-3, 10 OCT 2019 to 07 NOV 2019