

(CLEGG.CLEGG5) 19115
CLEGG FIVE ARRIVAL

AL-697 (FAA)

BLUE GRASS (LEX)
 LEXINGTON, KENTUCKY

LEXINGTON APP CON
 120.15 259.3
 BLUE GRASS ATIS
 126.3

CINCINNATI
 117.3 CVG
 Chan 120
 N39° 00.96' - W84° 42.20'
 L-26-27, H-10

WARSA
 N38° 45.80' - W84° 56.89'
VERTICAL NAVIGATION
 PLANNING INFORMATION
 Expect 14000.

FALMOUTH
 117.0 FLM
 Chan 117

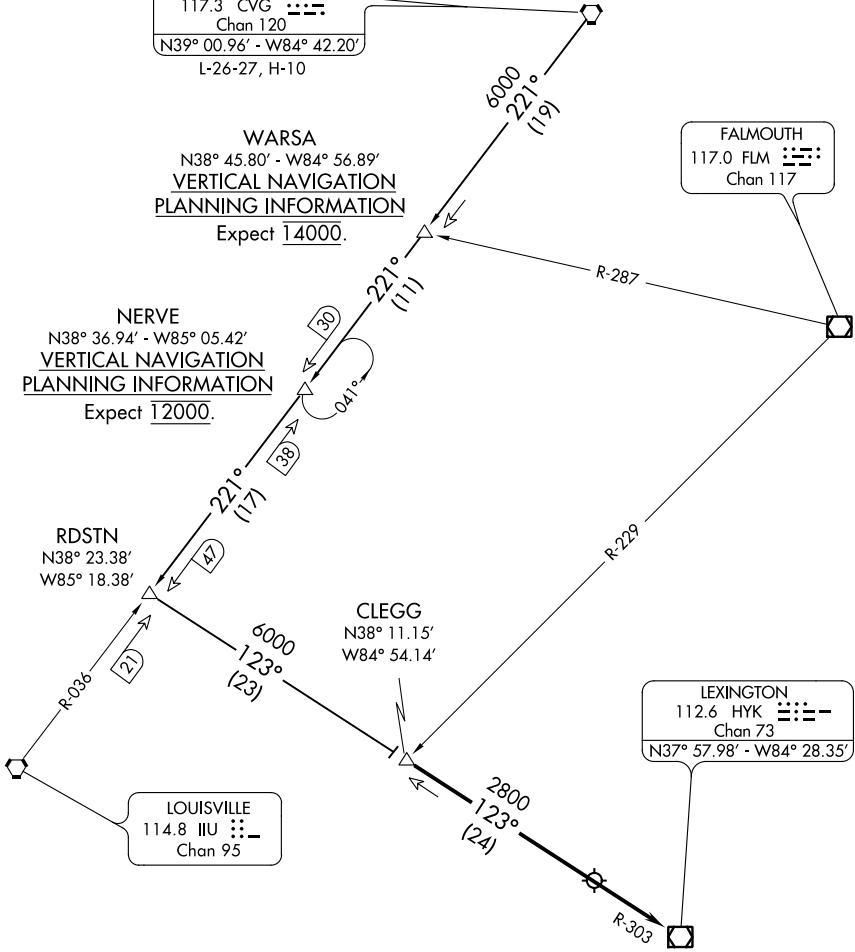
NERVE
 N38° 36.94' - W85° 05.42'
VERTICAL NAVIGATION
 PLANNING INFORMATION
 Expect 12000.

RDSTN
 N38° 23.38'
 W85° 18.38'

CLEGG
 N38° 11.15'
 W84° 54.14'

LEXINGTON
 112.6 HYK
 Chan 73
 N37° 57.98' - W84° 28.35'

LOUISVILLE
 114.8 IUU
 Chan 95



ARRIVAL ROUTE DESCRIPTION

CINCINNATI TRANSITION (CVG.CLEGG5):
 From over CVG VORTAC on CVG R-221 to RDSTN
 then on HYK VOR/DME R-303 to CLEGG. Thence...

...From over CLEGG on HYK R-303 to HYK VOR/DME.
 Expect radar vectors to final approach course after
 CLEGG.

NOTE: Radar Required.
 NOTE: DME Required.

NOTE: Chart not to scale.

CLEGG FIVE ARRIVAL
 (CLEGG.CLEGG5) 25APR19

LEXINGTON, KENTUCKY
 BLUE GRASS (LEX)

SE-1, 10 OCT 2019 to 07 NOV 2019

SE-1, 10 OCT 2019 to 07 NOV 2019