

LOC I-GNJ 111.75	APP CRS 226°	Rwy Idg 6604
		TDZE 979
		Apt Elev 979

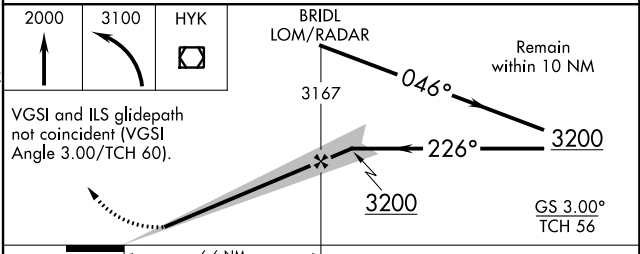
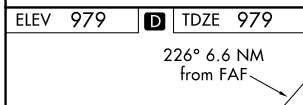
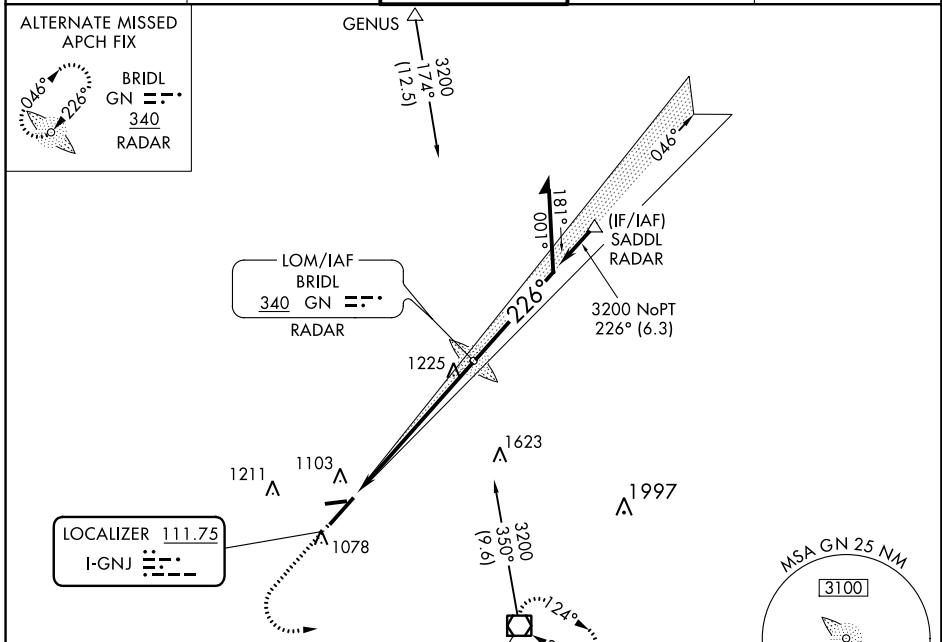
ILS or LOC RWY 22

BLUE GRASS (LEX)

⚠ Rwy 22 helicopter visibility reduction below 3/4 SM NA. When local altimeter setting not received, use Capital City altimeter setting and increase DA 62 feet and all MDAs 80 feet and increase S-ILS 22 all Cats, S-LOC 22 Cat C and D, and Circling Cat C visibility 1/4 SM.

⚠ MISSED APPROACH: Climb to 2000 then climbing left turn to 3100 direct HYK VOR/DME and hold.

ATIS 126.3	LEXINGTON APP CON 120.15 259.3	LEXINGTON TOWER 119.1 257.8	GND CON 121.9	CLNC DEL 132.35
----------------------	--	---------------------------------------	-------------------------	---------------------------



TDZ/CL Rwy 4
REIL Rws 9, 22 and 27
HIRL Rwy 4-22
MIRL Rwy 9-27

FAF to MAP 6.6 NM

Knots	60	90	120	150	180
Min:Sec	6:36	4:24	3:18	2:38	2:12

CATEGORY	A	B	C	D
S-ILS 22	1229-3/4 250 (300-3/4)			
S-LOC 22	1520-1 541 (600-1)	1520-1 1/2 541 (600-1 1/2)	1520-1 3/4 541 (600-1 3/4)	
CIRCLING	1520-1 541 (600-1)	1520-1 1/2 541 (600-1 1/2)	1540-2 561 (600-2)	

SE-1, 10 OCT 2019 to 07 NOV 2019

SE-1, 10 OCT 2019 to 07 NOV 2019