

LOC I-LEX 110.1	APP CRS 046°	Rwy Idg 6604 TDZE 969 Apt Elev 979
---------------------------	------------------------	--

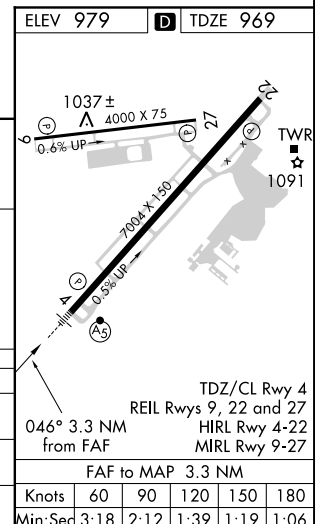
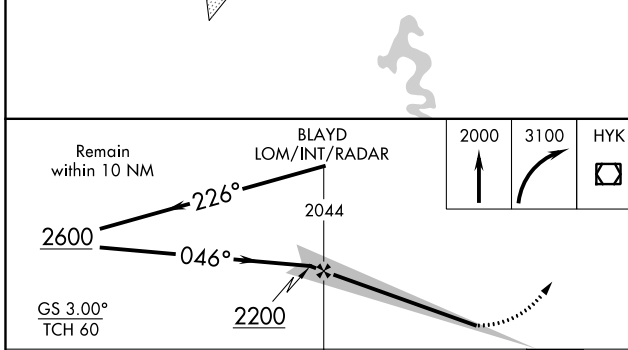
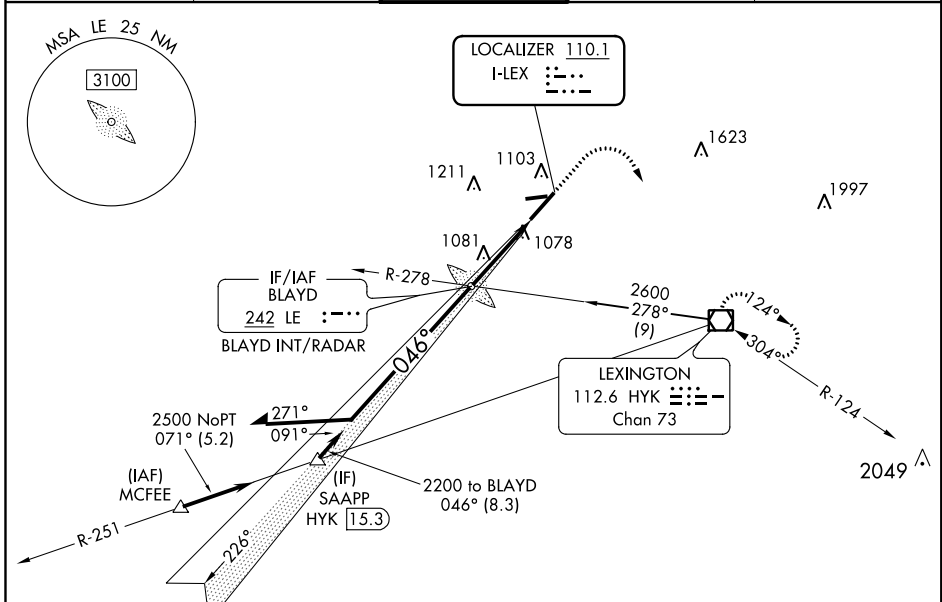
ILS or LOC RWY 4

BLUE GRASS (LEX)

⚠ When local altimeter setting not received, use Capital City altimeter setting and increase all DA 62 feet and all MDA 80 feet and S-LOC 4 Cats C/D visibility ¼ SM. For inop MALSRS when using Capital City altimeter setting, increase S-ILS 4 all Cats visibility to RVR 4500.

MALSRS MISSED APPROACH: Climb to 2000 then climbing right turn to 3100 direct to HYK VOR/DME and hold.

ATIS 126.3	LEXINGTON APP CON 120.15 259.3	LEXINGTON TOWER 119.1 257.8	GND CON 121.9	CLNC DEL 132.35
----------------------	--	---------------------------------------	-------------------------	---------------------------



CATEGORY	A	B	C	D
S-ILS 4	1169/18		200 (200-½)	
S-LOC 4	1340/24	371 (400-½)	1340/35	371 (400-¾)
CIRCLING	1420-1 441 (500-1)	1440-1 461 (500-1)	1440-1½ 461 (500-1½)	1540-2 561 (600-2)

ELEV 979	D TDZE 969
TDZ/CL Rwy 4 REIL Rwys 9, 22 and 27 HIRL Rwy 4-22 MIRL Rwy 9-27 FAF to MAP 3.3 NM	
Knots	60 90 120 150 180
Min:Seq	3:18 2:12 1:39 1:19 1:06

SE-1, 10 OCT 2019 to 07 NOV 2019

SE-1, 10 OCT 2019 to 07 NOV 2019