

WAAS CH 90201 W22A	APP CRS 226°	Rwy Idg TDZE Apt Elev	6604 979 980
--	------------------------	-----------------------------	---

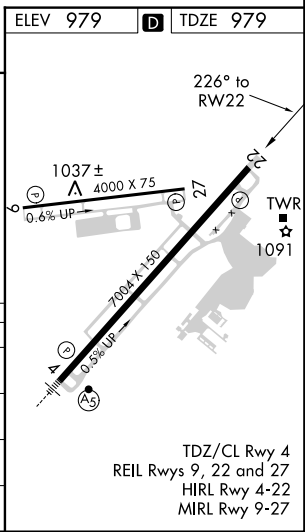
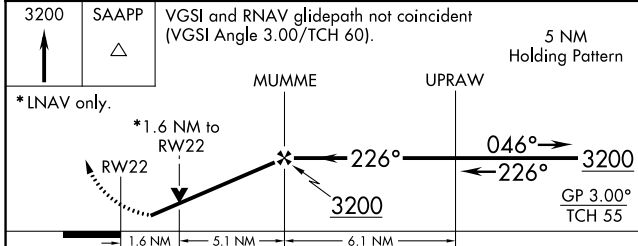
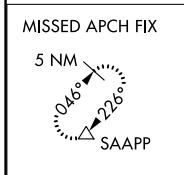
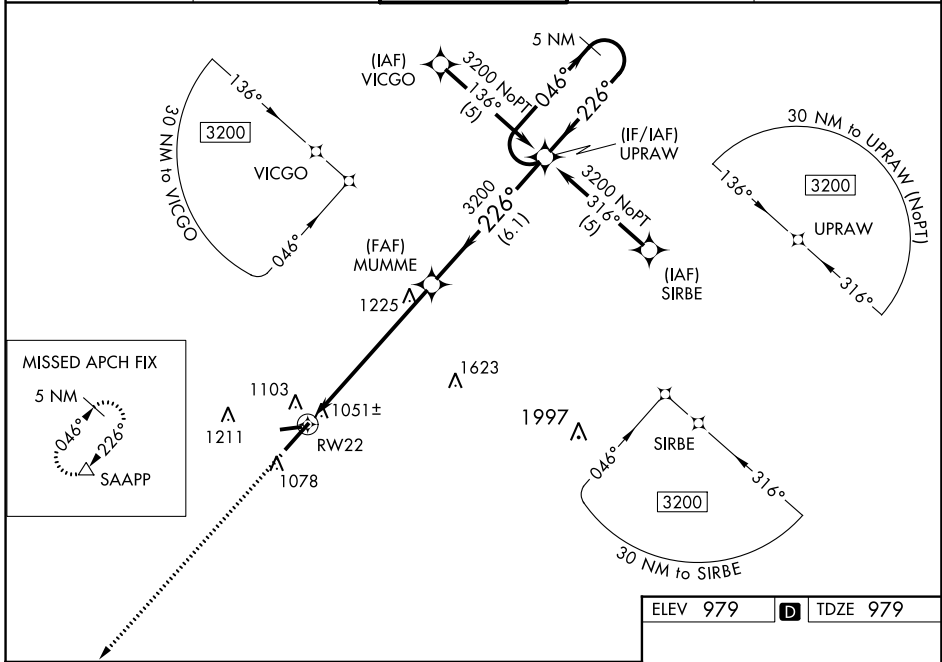
RNAV (GPS) RWY 22

BLUE GRASS (LEX)

⚠ For uncompensated Baro-VNAV systems, LNAV/VNAV NA below -16°C (4°F) or above 47°C (117°F). DME/DME RNP-0.3 NA. When local altimeter setting is not received, use Capital City altimeter setting and increase all DA 63 feet and all MDA 80 feet; increase LPV all Cats, LNAV/VNAV all Cats, LNAV Cats C/D, and Circling Cat C visibility ¼ mile. Baro-VNAV and VDP NA when using Capital City altimeter setting. Visibility reduction by helicopters NA.

⚠ MISSED APPROACH: Climb to 3200 direct SAAPP and hold.

ATIS 126.3	LEXINGTON APP CON 120.15 259.3	LEXINGTON TOWER 119.1 257.8	GND CON 121.9	CLNC DEL 132.35
----------------------	--	---------------------------------------	-------------------------	---------------------------



CATEGORY	A	B	C	D
LPV DA	1267-1		288 (300-1)	
LNAV/VNAV DA	1372-1¼		393 (400-1¼)	
LNAV MDA	1520-1	541 (600-1)	1520-1½ 541 (600-1½)	1520-1¾ 541 (600-1¾)
CIRCLING	1520-1	540 (600-1)	1520-1½ 540 (600-1½)	1540-2 560 (600-2)

SE-1, 10 OCT 2019 to 07 NOV 2019

SE-1, 10 OCT 2019 to 07 NOV 2019