

WAAS CH <b>86918</b> <b>W09A</b>	APP CRS <b>087°</b>	Rwy Idg TDZE Apt Elev	<b>4000</b> <b>967</b> <b>979</b>
--	------------------------	-----------------------------	---

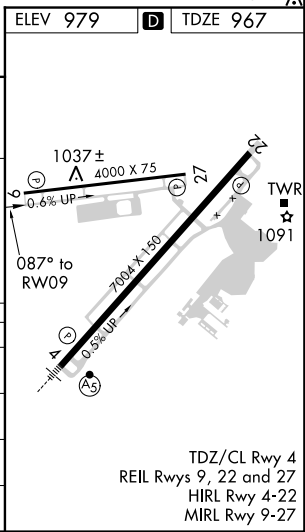
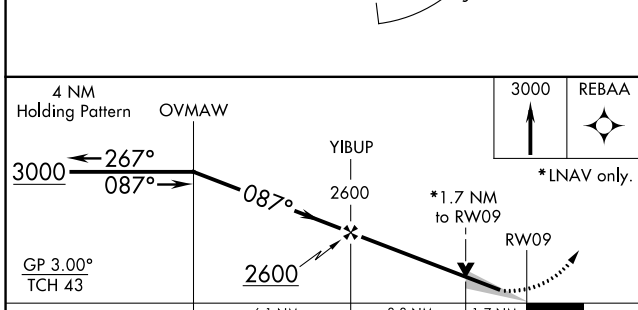
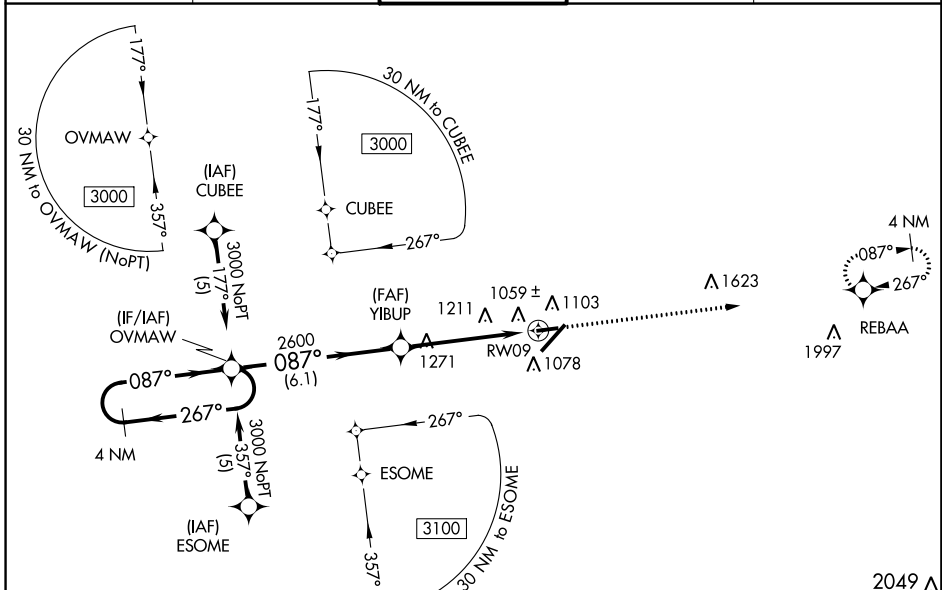
# RNAV (GPS) RWY 9

BLUE GRASS (LEX)

**⚠** Baro-VNAV NA when using Frankfort altimeter setting. For uncompensated Baro-VNAV systems, LNAV/VNAV NA below -16°C (4°F) or above 54°C (130°F).  
**⚠** DME/DME RNP-0.3 NA. VDP NA with Frankfort altimeter setting. When local altimeter setting not received, use Frankfort altimeter setting and increase all DA 63 feet and all MDA 80 feet; increase LPV, LNAV/VNAV all Cats, LNAV Cat C and D and Circling Cat C visibility ¼ mile.

MISSED APPROACH: Climb to 3000 direct REBAA and hold.

ATIS <b>126.3</b>	LEXINGTON APP CON <b>120.15 259.3</b>	LEXINGTON TOWER <b>119.1 257.8</b>	GND CON <b>121.9</b>	CLNC DEL <b>132.35</b>
----------------------	--	---------------------------------------	-------------------------	---------------------------



CATEGORY	A	B	C	D
LPV DA		1217-1	250 (300-1)	
LNAV/ VNAV DA		1359-1½	392 (400-1½)	
LNAV MDA	1540-1	573 (600-1)	1540-1½ 573 (600-1½)	1540-1¾ 573 (600-1¾)
CIRCLING	1540-1	560 (600-1)	1540-1½ 560 (600-1½)	1540-2 560 (600-2)

TDZ/CL Rwy 4  
REIL Rwys 9, 22 and 27  
HIRL Rwy 4-22  
MIRL Rwy 9-27

SE-1, 10 OCT 2019 to 07 NOV 2019

SE-1, 10 OCT 2019 to 07 NOV 2019