

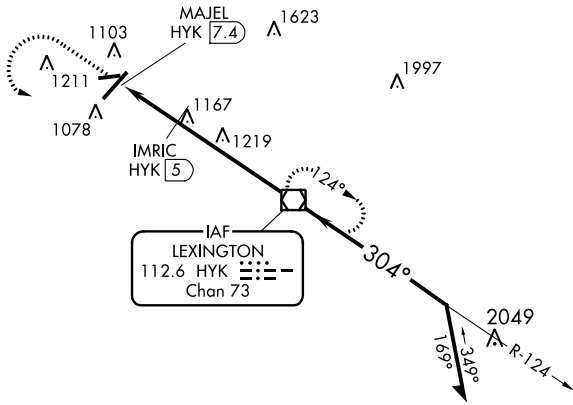
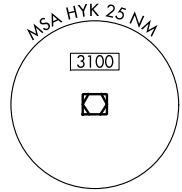
VOR/DME HYK 112.6 Chan 73	APP CRS 304°	Rwy Idg TDZE Apt Elev	N/A N/A 979
-----------------------------------------------	------------------------	--------------------------	----------------------------------------

VOR-A
BLUE GRASS (LEX)

▽ If local altimeter setting not received, use Capital City altimeter setting and increase all MDAs 80 feet.

MISSED APPROACH: Climb to 3100 then left turn direct HYK VOR/DME and hold.

ATIS 126.3	LEXINGTON APP CON 120.15 259.3	LEXINGTON TOWER 119.1 257.8	GND CON 121.9	CLNC DEL 132.35
----------------------	------------------------------------------	---------------------------------------	-------------------------	---------------------------

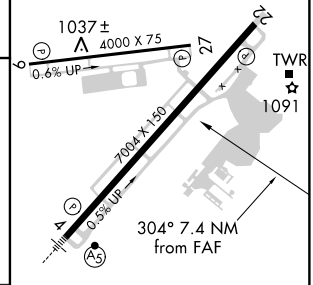


IAF
LEXINGTON
112.6 HYK
Chan 73

SE-1, 10 OCT 2019 to 07 NOV 2019

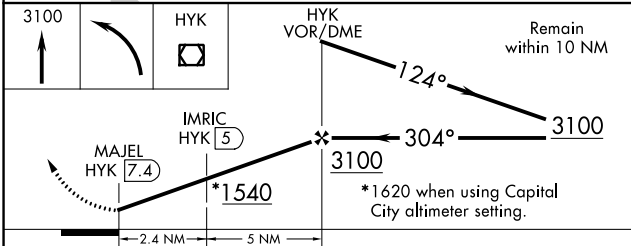
SE-1, 10 OCT 2019 to 07 NOV 2019

ELEV 979	D
----------	----------



TDZ/CL Rwy 4
REIL Rwys 9, 22 and 27
HIRL Rwy 4-22
MIRL Rwy 9-27

FAF to MAP 7.4 NM					
Knots	60	90	120	150	180
Min:Sec	7:24	4:56	3:42	2:58	2:28



CATEGORY	A	B	C	D
CIRCLING	1540-1	561 (600-1)	1540-1½ 561 (600-1½)	1540-2 561 (600-2)
IMRIC DME FIX MINIMUMS				
CIRCLING	1460-1	481 (500-1)	1460-1½ 481 (500-1½)	1540-2 561 (600-2)