

LOC I-APN 109.7	APCH CRS 007°	Rwy Idg TDZE Arprt Elev 9001 685 690
---------------------------	-------------------------	--

JAL-718 [USAF]

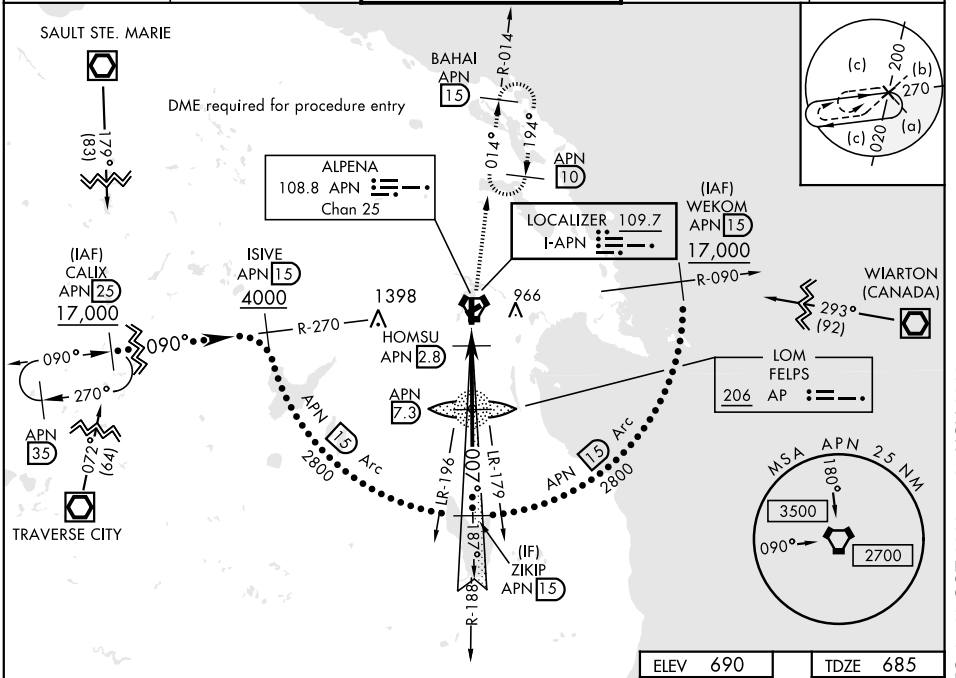
ALPENA COUNTY RGNL (KAPN)

* When ALS inop, increase vis to ¾ mile.
 ** When ALS inop, increase vis to 1¾ miles.



MISSED APPROACH: Climb to 1300, then climbing right turn to 5000 on APN VORTAC R-014 to BAHAI/15 DME and hold. Continue climb in hold to 5000.

ASOS 120.675	ALPENA APP CON 128.425 379.3	ALPENA TOWER * 121.35 (CTAF) 318.1	GND CON 121.9 275.8	UNICOM 122.95
------------------------	--	--	-------------------------------	-------------------------

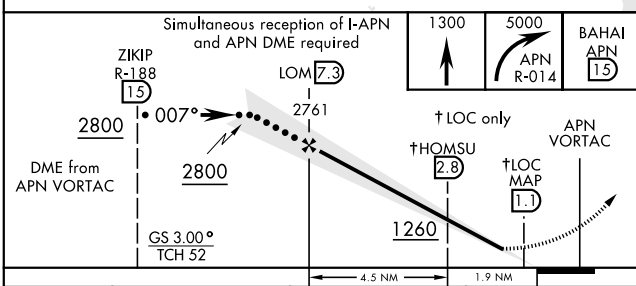


EC-1, 10 OCT 2019 to 07 NOV 2019

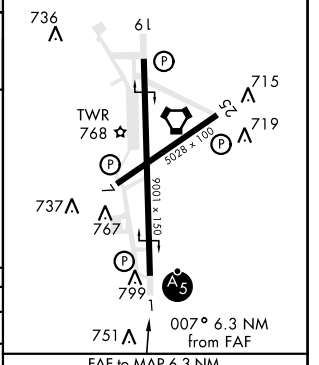
EC-1, 10 OCT 2019 to 07 NOV 2019

DME REQUIRED

EMERG SAFE ALT 100 NM 4000



ELEV 690	TDZE 685
HIRL Rwy 1-19	
MIRL Rwy 7-25	
REL Rwy 7, 19, and 25	



CATEGORY	C	D	E
S-ILS 1*	885-½	200	(200-½)
S-LOC 1**	1140-¾	455	(500-¾)
CIRCLING	1140-1½	1260-2	1320-2¼
	450 (500-1½)	570 (600-2)	630 (700-2¼)

FAF to MAP 6.3 NM					
Knots	120	140	160	180	200
Min:Sec	3:09	2:42	2:22	2:06	1:53